

# Wafas A N D Wallas

YOUR LOCAL PARISH MAGAZINE

[www.wavendonparishcouncil.co.uk](http://www.wavendonparishcouncil.co.uk)

April 2019



*Inside this edition*

**The New St Marys CoE Primary School, Wavendon**  
(opening September 2019)



**Wafas & Wallas - Your Parish Newsletter**  
*Spring 2019 Edition*



## Wafas & Wallas – Your Parish Newsletter

### Spring 2019 Edition

**Editor:** *David Hopkins*

80 Walton Road | Wavendon | Milton Keynes | MK17 8LW

**Wafas** AND  
*Wallas*

For any local issues contact me at;

[David.hopkins@milton-keynes.gov.uk](mailto:David.hopkins@milton-keynes.gov.uk)

*Printed & Published by  
Wavendon Parish Council  
on behalf of the people  
of the ancient Parish of  
Wavendon  
(including parts of  
Hog Sty End)*



**Wavendon on the Web:**

[www.wavendonparishcouncil.co.uk](http://www.wavendonparishcouncil.co.uk)



### Copy Date

**for June**

*(the Summer 2019) edition:*

**Sunday 19 May 2019**

### Wavendon Parish Council

For any issues that you would like to raise with Wavendon Parish Council please contact, in the first instance, Parish Clerk - **Alan Kemp**

*Wavendon Parish Council Clerk*  
[alanj.kemp@btinternet.com](mailto:alanj.kemp@btinternet.com)

### Address

57 West End, Long Whatton,  
Loughborough, Leicestershire, LE12 5DW.

### Phone Contact

**HOME** 01509 844241

**MOBILE** 07783 939020

### Village Contacts

*Wavendon Parish Council*



Cllr David Hopkins *(Chairman)*

Cllr Susan Moroz

Cllr Arthur Braddish

Cllr David Ostler

Cllr Robert Hill *(Vice Chairman)*

Cllr Ron Jamieson



**Looking to hire  
the Wavendon Community  
Centre?**

**Contact Susan Hopkins**

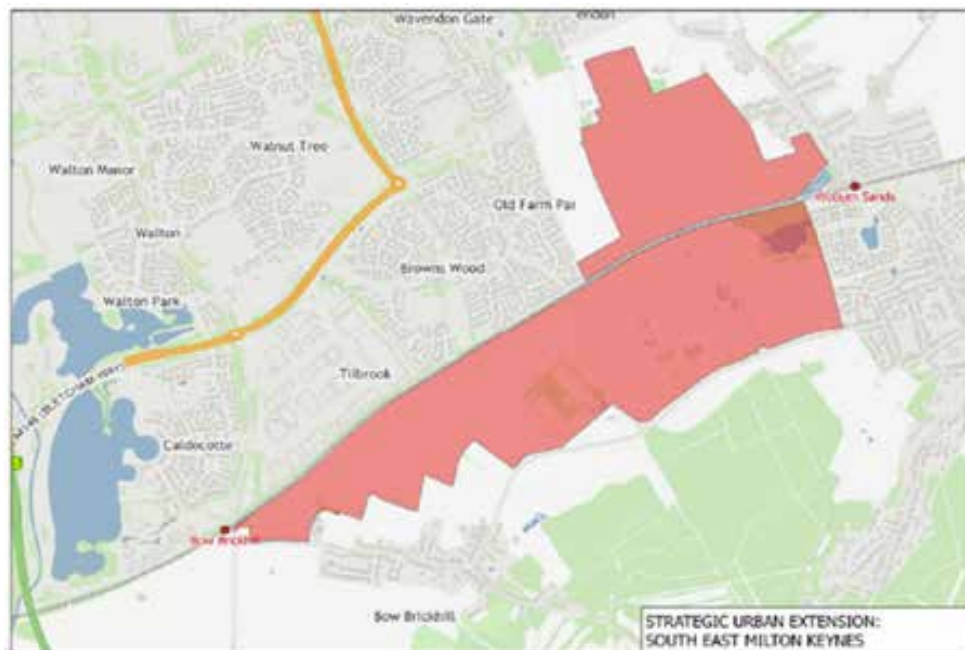
**Hall Manager:**

**T: 07512 685198**

# The South East Milton Keynes Expansion Area

South East Milton Keynes Strategic Urban Extension (or SEMK) is a draft allocation within the new local plan, Plan:MK, covering an area of land approximately 210 hectares in size encompassed by Tilbrook, Browns Wood and Wavendon to the North, Woburn Sands to the East, the Greensand Ridge to the south, and Bow Brickhill to the west.

The draft allocation within Plan:MK, under Policy SD13, allocates the land for around 3,000 homes, 7 Gypsy and Traveller pitches, and a range of social and green infrastructure provision.



**The plan is scheduled to be adopted (made) by MK Council on 20 March 2019.**



## Cranfield Road Bridge Closure

To extend the permanent bridge on Cranfield Road, CBC needs to close it from May 2019. The bridge is expected to be closed for up to 14 months whilst the improvements are done. CBC is working with contractors to reduce this period, if possible. The project is a Central Bedfordshire Council Project.

Residents concerned about road signage should email **Michael Williams** at CBC at [Michael.Williams@centralbedfordshire.gov.uk](mailto:Michael.Williams@centralbedfordshire.gov.uk)

Project Manager A421 Dualling Highways,  
Community Services  
Central Bedfordshire Council Priory House,  
Monks Walk, Chicksands, Shefford, Bedfordshire,  
SG17 5TQ Direct Dial: 0300 300 6315

**A421**



## Friends of Woburn Sands Station

The group is now established with the aim of enhancing our station at Woburn Sands. If you have any ideas or would be willing to help with plants and planting please contact the Chairman, **Robert Allan** on [robballan1301@gmail.com](mailto:robballan1301@gmail.com)



## Reporting issues to Milton Keynes Council

Issues that need to be reported to Milton Keynes Council can be done via the link noted below. This covers reporting items such as street lamps, waste and recycling, missed collections, defect on roads/potholes etc.

**[www.milton-keynes.gov.uk/  
pay-report-aply/report-it](http://www.milton-keynes.gov.uk/pay-report-aply/report-it)**



# Oxford - MK-Cambridge Expressway

Date	Event
Autumn 2017	Commitment by the Chancellor for construction to commence on the missing link before the end of the Road Investment Strategy (RIS2) in 2025
2018	Corridor assessment
Autumn 2019	Public consultation on route options*
2020	Preferred route announcement*
2025	Construction starts*
2030	New link opens to the public



*\*Indicative timetable, subject to preferred route options*

Oxford To Cambridge Expressway Team - National Infrastructure Programme

Highways England | Woodlands | Manton Lane | Bedford | MK41 7LW

Web: <http://www.highways.gov.uk>



## OVER 60's MONTHLY OUTING 17 APRIL

In every month except January, February and November, the Woburn Sands Town Council along with Wavendon and Bow Brickhill parish councils organise and subsidise a coach trip to a great variety of places of interest. These are usually held on the third Wednesday of the month and tickets booked via the relevant parish clerk.

The Monthly coach outings for 2019 will commence on **20 March** with a trip to Cambridge and the coach will leave Wavendon at 9.30, pick up at Woburn Sands outside Fish & Chip Shop, outside Tesco's and The Leys bus stop.

The next pick up will be at Bow Brickhill, Station Road, at Greenways.

Leaving Cambridge at 4 pm to return. Tickets £9 for all eligible residents.

*The following outing will be 17 April.*

**To book contact: [I.stapleton@wstc.org.uk](mailto:I.stapleton@wstc.org.uk)**



## WOBURN SANDS COMMUNITY MARKET DATES

(now) SATURDAYS

A Community Market is held bi-monthly on the second Saturday from 10:00-12:00 February, April, June, August, October and December around the Institute and Memorial Green. This is a market for locally produced food and crafts and is run by volunteers and some Councillors.

## Snippets for Spring

### *Plans for former Wavendon Golf Course?*

Redrow Homes have made enquiries at MK Council regarding the development of the former 18 hole golf course in Wavendon. They have made a pre-application enquiry about the possibility of building up to 700 homes on the land behind Wavendon House and Cross End.



MK Council planning officers have expressed concerns relating to impact on the local road network, access, ecology and the impact on the setting of Wavendon House and Listed Buildings in Cross End. But the most significant issue is that the site is allocated as Recreation and Open Space in Plan:MK. Given that and the fact that it looked impossible to square the concerns about access and impact on the local road network, without having a detrimental impact on the listed buildings and ecology the councils advice to Redrow at the meeting was that the proposal was unlikely to get planning permission. On the basis that Plan:MK is likely to be adopted in the next month or so and that will strengthen the MK Council 5 year Housing Land supply argument, it seems very unlikely that Redrow will make an application in the near future. However, within a couple of years, depending on what is happening nationally and locally, Redrow may feel more prepared to take on the 5 Year Housing Land supply argument. In planning terms the golf course is a 'Brownfield site' and I suspect that Redrow or the site's owners could produce evidence (although MK Council could probably challenge that) that the golf course is uneconomic. So without a 5 year housing land supply MK Council could be vulnerable here.

If Redrow does come in with an application, setting aside the local plan allocation, one of the areas that will loom large in the discussions would be the question of access. One solution would be to connect up with the grid roads in the SLA area to the north and east and into MK via grid roads to the west. However, this would have a significant, and in the mind of planning officers, detrimental, impact upon Cross End, Wavendon House, the ecology of the site and the appearance of the area in general. However, without the grid road solution, the impact on the existing road network would be even greater.

To summarise, at the moment no proposal appears to be imminent. However, I am aware that since the golf course closed late last year, rumours have circulated in the area about what might be planned. So I suspect it won't be long before your phones start to ring.

**Please contact Jeremy Lee at MK Council if you want to discuss any of this.**

**Jeremy Lee** - Senior Planning Officer (East Team Development Management)

T: 01908 252316

M: 07795 475594

E: [Jeremy.lee@milton-keynes.gov.uk](mailto:Jeremy.lee@milton-keynes.gov.uk)

### *The Wyvale Garden Centre*

The Wyvale Garden Centre site in Wavendon has been bought by Rochmills Group. Rochmills Ltd, which acquired the Wavendon site, is run by the Sehmi family, who have "significant experience in operating retail and leisure businesses".

## *Funding Opportunities*

### Milton Keynes Community Foundation Small Grants

MKCF's Small Grants Programme awards up to £1,500 for projects that make a positive impact in Milton Keynes and benefit local people. Find out more about eligibility and applying here.

<http://www.mkcommunityfoundation.co.uk/grants/apply-grant/>

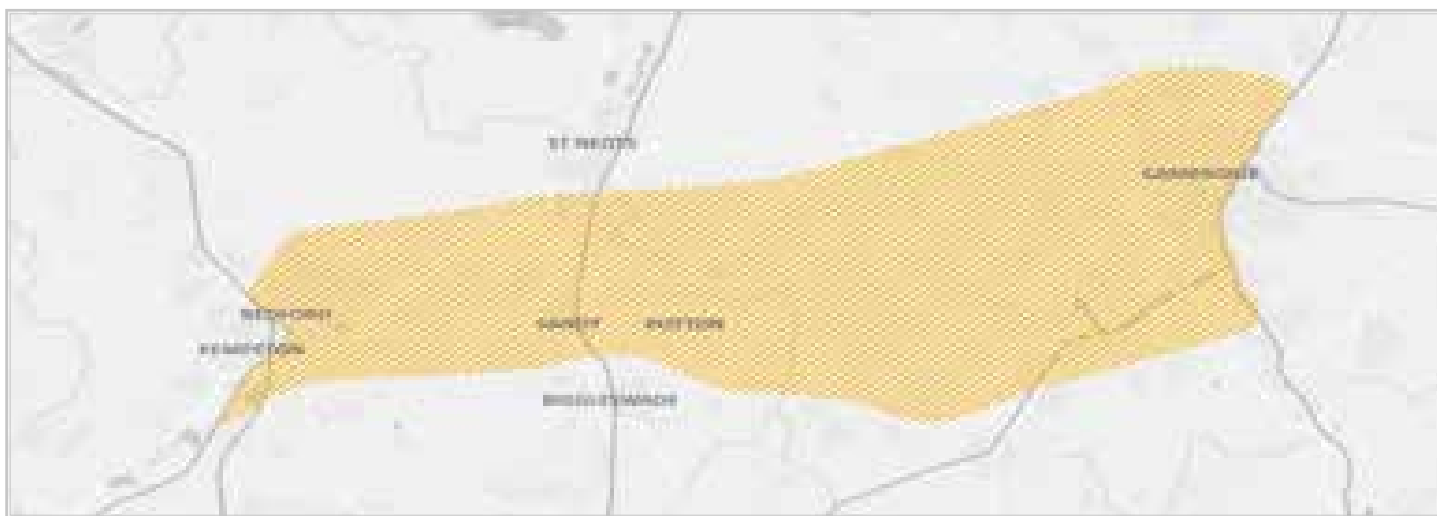
### Thomas Wall Trust

The Thomas Wall Trust was established in 1920 for the "encouragement and assistance of educational work and social service." Today, the Trust continues to assist in these areas by providing grants to individuals and organisations. Grants of up to £1,000 are available for individuals and registered charities. To apply you should create an account on the website and request a form. Applications can be made at any time and will be considered at Trustee meetings held twice a year usually in July and November. Read more at <https://www.thomaswalltrust.org.uk/>

### UK Power Networks Power Partners

Grants are available up to £20,000 to not-for-profit organisations and community groups in the South East, East of England and London for initiatives that combat fuel poverty, improve the energy efficiency of community spaces or support people in vulnerable circumstances with their energy use. Read more at <https://www.cse.org.uk/projects/view/1356>

## East West Rail Update



East West Rail is creating a new rail connection between Oxford and Cambridge. This will connect communities, making it faster, easier and cheaper to travel in the local area, as well as opening up job opportunities, supporting local business and helping the economy to grow. You can read more about the scheme here.

While the Western Section between Oxford and Bedford can be built by reinstating and upgrading old rail lines, for the Central Section

between Bedford and Cambridge we need to build an entirely new rail line. The final alignment of this rail line and new stations will be located within the broad area shown on the above map.

<https://eastwestrail.co.uk/haveyoursay>



# Wavendon Parish Council News

## Local Bus Services

Contracts for all bus services subsidised by Milton Keynes Council end in October 2019. MK Council is proposing to extend the contracts for all services to October 2020. During 2019/20 we will undertake a bus network review in partnership with commercial bus operators. This will consider all services; those that are commercial and those that are subsidised – either by the Council or from developer funding. MKC will assess how the network can be developed to meet aspirations for service improvements from both current users and new customers, whilst maintaining a network that is sustainable in the long term. This process will include full public and stakeholder consultation which will take place in the summer of 2019.



A list of all contracted services in and around Wavendon/Woburn Sands is set out below. All other services in Milton Keynes operator commercially and operators are able to make changes to commercial services at any time, however through the new Quality Bus Partnership Arriva have committed to advise the Council before proposing any changes to commercial routes so that we can assess impacts and influence any proposals accordingly.

**Service 17 Mon-Sat Z&S**  
Bletchley - L Brickhill - Bow Brickhill -  
W Sands - Kingston

**Service 300 Daily Arriva**  
CMK - Coachway - Kingston -  
Woburn Sands

Arriva has asked again about the possibility of serving Woburn Sands as an extension of service 301 rather than service 300.

For more information contact  
**Stuart Simmonds**  
Public Transport Technical Lead

T: 01908 252011  
E: Stuart.Simmonds@milton-keynes.gov.uk

## Parish Council Website:

We have recently updated our website: [www.wavendonparishcouncil.co.uk](http://www.wavendonparishcouncil.co.uk) and the objective is to regularly update the Latest News Page on any key issues affecting the Parish. You will still be able to view any planning applications and forthcoming Parish Council meeting agendas and minutes.

We have also taken the opportunity to set up a new email address for contacting the Parish Clerk which is **clerk@wavendonparishcouncil.co.uk**

## Mrs Robinson's Outing:

Please note the date in your diary for this year's outing will be on **Tuesday the 10th September 2019**, for residents over the age of 60 and living in the Ancient Parish of Wavendon. For qualifying residents this is a free outing that takes place every year because of the generous bequest made in 1965 to the Parish Council by Mrs E L Robinson (a former resident). However, should you wish to bring a friend with you there will be a charge of £10.00 per guest.

More details will be included in the next edition of the Newsletter.

## Recreation Ground / St Mary's Green:

Soon the recreation ground and St Mary's Green will be enhanced with some more daffodils that have been funded by a Ward Councillor grant from Cllr D Hopkins and the Parish Council.

Thanks go to the volunteers that planted them last Autumn.

## Waste Recycling bags



MKC still provide these free to residents but no longer deliver them automatically every so often to houses.

Instead you need to either go on line to **MKC website and register**, or ring **01908 252570** to order more.





# The Wavendon Volunteer Army Update!



*Daffodil bulbs donated by Cllr Victoria Hopkins*

**With the weather warming up the Volunteers are gearing up for a busy year of activities.**



Hopkins)

Previously we have planted over 2500 daffodils in the village and on the recreation ground. (Kindly donated by Councillor Victoria

Cleared the road gutters in the village

Replaced the underground electricity cable that supplies the Christmas tree on St Mary's green.

We maintain the beds at the entry to the village from Newport Road and in the recreation ground.

Various other jobs as needed around the village have been completed.

**The program for this year is quite busy with general maintenance as before plus;**

Litter picking.

Painting the seating on the recreation ground

Removing small old dead trees on the recreation ground and planning replacements.

We are hopeful that we will gain approval from Wavendon Parish Council to install some raised planters for summer bedding within the village to add some summer cheer.

We have secured further funding from Councillor Hopkins again to cover the costs and have also raised some funds via our own efforts so we can really make a difference.

We are all volunteers and have both men and women who support us. **If you have a few hours to spare why not join us ?** We tend to work on a morning, frequently Thursdays but other days when needed.

**Contact us via [japthm@btinternet.com](mailto:japthm@btinternet.com)**



**Time to spare?**

**Are you looking for something new to do?**

If so, and you are over 21, be part of the Rotary Satellite Club of Woburn Sands & District, where a friendly welcome awaits.

**We meet at The Anchor, The Square, Aspley Guise, Milton Keynes MK17 8DF on the 1<sup>st</sup> & 3<sup>rd</sup> Thursday of the month at 7.00pm.**

Rotary creates new friendships and opportunities to help others whilst having fun. Willen, Ride High, Night Shelter and others have benefited from our efforts so far.

**So why not come along and meet us...**

**EVERYONE IS WELCOME**

**Bring along your partner or a friend**

**Need further information?**

Anne - Tel. 07339 406766 Email - [woburnsandsrotary@gmail.com](mailto:woburnsandsrotary@gmail.com)



Have a look at our facebook page:  
**Wavendon Volunteer Army**  
for photos of some of the activities and people





# Clean Bill Of Health Again For WWFC



Woburn & Wavendon FC is proud to be a place for people to play and enjoy **"football for all"**. The Club have once again been accredited FA Charter Standard status for their commitment to delivering the best possible experience for players, referees, coaches and supporters, making football safe and fun for everyone.

WWFC was formed in 1976 and serves South East Milton Keynes, the fastest developing area in the UK. With nearly 500 playing members and approaching 40 teams from Under 6 through to adult – mixed, male, female and disability- **there are many opportunities for all to get involved.**

One of the Club's most significant initiatives is set to get underway again - **The Lionesses SSE Wildcats Girls' Football Centre**, which involved some 60 girls aged 6-11 in regular football sessions (many for the first time) and achieved two new girls teams for 2018/19. Amongst the FA's most successful centres last year, the Wildcats get underway again on Sunday 10th March and will run every Sunday morning in Woburn starting at 10.30am. Come along to as many sessions as you like.

To find out more:- email: [wildcats@ww-fc.co.uk](mailto:wildcats@ww-fc.co.uk)

**WWFC is all about FUN, FRIENDSHIP & FOOTBALL.** From regular Sunday sessions aimed at Foundation/Reception girls and boys through to the Club organised refereeing courses, the Club is committed to providing continuous opportunities for all ages, backgrounds and abilities to develop and thrive in the wider football family. No better illustration of this is the Club's weekly **"GoalAbility"** pan-disability football sessions. Awarded "Community Project of the Year" by the FA, the sessions are 100% volunteer run by qualified WWFC coaches and provide accessible opportunities for boys and girls to achieve their particular goals through football.

The Club's regular **Under 6 and Under 5 Cubs**

**Sunday sessions** have also been hugely successful, delivering new Under 7 teams each season. But as we all know, it's not just a case of turning up and playing. Behind every new team there has to be a strong and committed volunteer element, from a coach willing to take the fully Club funded FA Level One Coaching qualification, through to all the administrative and safeguarding support. Indeed volunteers are the key requirement for the Club as a whole as it seeks to sustain and develop the provision of grassroots football. That's the driving force behind the Club's "Get Involved" campaign that seeks to target the thousands of potential volunteers who have contact with the Club each and every week.

From serving on the Club Committee to helping cut the grass at the playing fields, one of WWFC's most valuable assets is its' **volunteer support**. There are a host of Club roles requiring volunteers including safeguarding, pitch co-ordination, kit supply, grant funding, sponsorship, communications, Parish Council and League liaison which all look for volunteers each season in order to spread the load and ensure WWFC remains robust and forward thinking.

The Club depends upon attracting as much energy and expertise from as many volunteers as possible. It's the lifeblood of the Club, but most of all its' huge fun and really makes such a difference to the whole community.

If you'd like to get involved with grassroots football at its' best, please email:- [getinvolved@ww-fc.co.uk](mailto:getinvolved@ww-fc.co.uk)



## Greensand Country



Greensand Country has been inhabited since prehistoric times, although the earliest people to live here left little sign apart from a few flints and pots now buried under the ground. By the iron age people were building villages and hill forts, which you can still see in the landscape today. Romans built roads along the ridge at Old Warden, Caesar's Camp at Sandy and left scatters of pottery and beautiful glass at Shefford. Anglo Saxons founded towns and built the earliest churches. The Normans built manor houses and fortified castles, you can still explore one of their motte and bailey mounds at Cainhoe near Clophill.

In the middle ages the Greensand was a place of monasteries and deer parks. Cistercian monks lived at Old Warden and Gilbertine nuns in the priory at Chicksands. The soil was too thin to grow crops in most places so people farmed the woodlands, feeding pigs and growing timber. Rabbits were raised in huge warrens and peat was cut from the river valley at Flitton.

As the monasteries were closed by Henry VIII, the land passed over to the great families of England who built stately home and manor houses. Designers like Capability Brown and Humphrey Repton designed great parks like those at Woburn and Ampthill, making new lakes and streams, and wide open grassy spaces full of deer and grazing cattle.

In more recent times Greensand Country has been home to the armed forces, with the United States Air Force radio antenna at Chicksands.

Now over one million people live in and around the Greensand Country. The woods, parklands and miles of footpaths and bridleways make Greensand Country perfect for day outs on foot, bike or horseback. Organisations like the Greensand Trust, Wildlife Trusts, RSPB and Central Bedfordshire Council help look after the parks and nature reserves and maintain the footpaths and cycleways.

For more information about the Greensand Country Landscape Partnership, contact the team on

**E. [team@greensandcountry.com](mailto:team@greensandcountry.com)**

**T. 01234 838774**

**The Old School - Cardington - Bedford - Bedfordshire - MK44 3SX**

## St. Mary's Wavendon C of E Primary School

Stories were brought to life in front of 15 of our Year 5 children, during a Storytelling event at David Wilson Homes South Midland's development Eagles' Rest in Milton Keynes.

St Mary's pupils were lucky enough to be invited along to visit one of the newly build show homes, and attend a storytelling session, hosted by professional storyteller, Richard York, in aid of National Storytelling week.



Amanda Dicks, Head Teacher at St Mary's Wavendon C of E Primary School said "Richard was amazing and so inspirational for our children who all went home

telling their own stories, using their imagination to elaborate upon what they had heard earlier in the afternoon."



St Mary's Wavendon CE Primary School is relocating to the Eagle Farm development in September 2019. If you are moving into this area, or know someone who is, then do contact Milton Keynes Admissions, or alternatively contact the current school office on **01908 582182** for further information.

Please join us at  
**St Mary's Church**  
 for  
**Mothering Sunday**



Sunday 26th March  
 9.30 am

All welcome to a celebration  
 of people who care for us

### PRAYER at St MARY's

Monday  
 9.15 - 10.00  
 Informal prayer group

Thursday  
 12.30 - 12.50  
 A quiet service of prayer

Sunday  
 After service  
 Private prayer in chapel

Or email any time  
 for confidential prayer  
 (anonymity preserved)  
[prayerchain.wavendon@gmail.com](mailto:prayerchain.wavendon@gmail.com)



Meet outside  
**St Mary's Church**  
 at 2.30pm on  
**Sunday 17th March**



Our prayer ministry continues  
 in new and established areas of  
 Walton parish. You are warmly  
 invited to walk and pray with us  
**PLEASE COME ALONG!**

Join us at  
**St Mary's**  
**Wavendon**

*Every Sunday*  
 9.30 am

*and for these  
 special services:*

March 6th  
**Ash Wednesday**  
 10.00 am

*Communion  
 at the start of Lent*

~  
 April 18th  
**Maundy Thursday**  
 8.00 pm

*Candlelit communion  
 commemorating  
 the Last Supper*

~  
 April 19th  
**Good Friday**  
 10.00 am

*A reflection  
 on the journey  
 to the Cross*

~  
 April 16th  
**EASTER SUNDAY**  
 9.30 am

*A celebration  
 of hope*

~  
*Everyone welcome*

April 14th  
**Palm Sunday**



### Cafe Church

*Challenge & chat  
 over coffee & pastries  
 from 9.20 am*

Everyone welcome

*Children are welcome at  
 St Mary's Church*



*Carpeted play area, toys,  
 books & drawing materials*

1st, 3rd & 5th Sundays

*Dedicated  
 Children's Church  
 alongside communion*

2nd & 4th Sundays

*All-age worship*

**St Mary's**  
**Coffee Mornings**



**Thursdays**  
 8.45 - 12.00

Weekly in term time  
 Babies/toddlers welcome

Holiday hours: 10 - 12  
 11th & 18th April



## ***Friendship Club for Seniors***

***Wavendon Village Hall  
(opposite St Mary's Church)***

***on***

***Alternate Tuesdays 2-4pm***

***Come & Join Us***

***Scrabble, Cards, Dominoes, Chat, Cake & a Cuppa  
Contact Monica 01908 582844  
or Alise & Matt 01908 582839***

***Next meetings:***

***12th March, 26th March, 9th April***

***23rd April, 7th May, 21st May***

**OpenHouse@StMarys**

**Second Mondays 2-3.30 pm**

***local news - worship - visiting speakers***

***support for local charities***

**March 11th - April 8th - May 13th**

## **QUIZ NIGHTS**

**Monthly on Tuesdays**

**7.30pm-9pm**

**St Mary's Wavendon**

**19<sup>th</sup> March,**

**16<sup>th</sup> Apr, 21<sup>st</sup> May**



**£1 per person / Teams of up to 6**

**Bring your own drinks and nibbles**

**Winning team takes half of entrance monies**

## **Just turn up!**

**You can join a team on the night - or bring your own**

## **rock Solid**



**Where?** We meet at Christ the King,  
Kent's Hill

**Who?** For ages 9-14

**When?** Fortnightly on Thursdays 7.00pm-  
8.30pm, alternating with Youth Club

**Why?** To learn about Jesus through  
games, activities and chat

**Dates for Spring 2019:**

**7th March, 21st March, 4th April**



**Where?** We meet at Christ the King,  
Kent's Hill

**Who?** For ages 9-14

**When?** Fortnightly on Thursdays 7.00pm-  
9.00pm, alternating with Rock Solid

**Why?** To make friends and chill!

**Is there a cost?** Just £1 per session to  
cover snacks and drinks

**Dates for Spring 2019:**

**14th March, 28th March, 11th April**