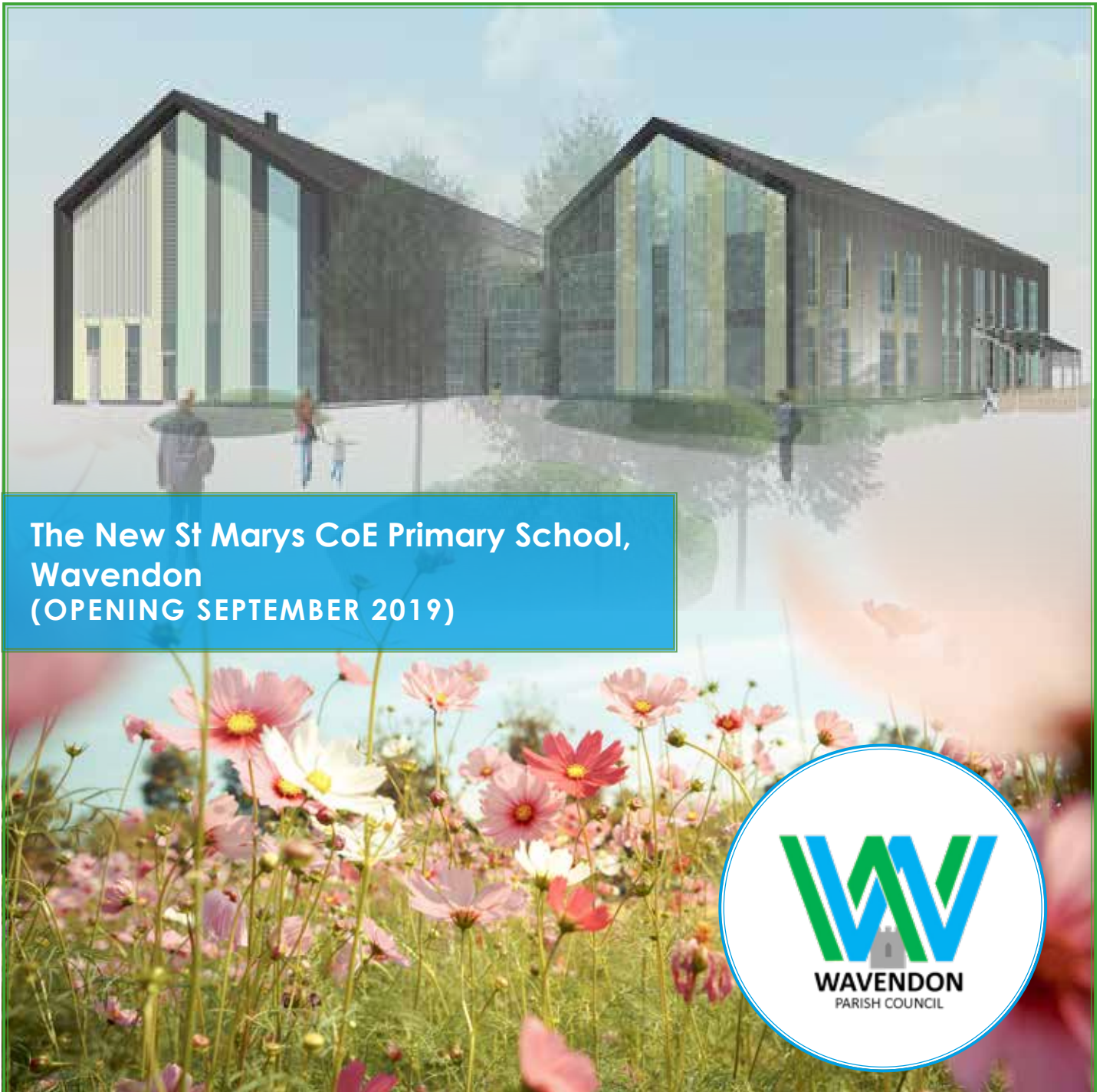


Wafas A N D Wallas

YOUR LOCAL PARISH MAGAZINE

www.wavendonparishcouncil.co.uk

June 2019



**The New St Marys CoE Primary School,
Wavendon
(OPENING SEPTEMBER 2019)**



Wafas & Wallas - Your Parish Newsletter
Summer 2019 Edition



Wafas & Wallas – Your Parish Newsletter SUMMER 2019 EDITION

Editor: *David Hopkins*

80 Walton Road | Wavendon | Milton Keynes | MK17 8LW

Wafas AND
Wallas

For any local issues contact me at;

David.hopkins@milton-keynes.gov.uk

*Printed & Published by
Wavendon Parish Council
on behalf of the people
of the ancient Parish of
Wavendon
(including parts of
Hog Sty End)*



Wavendon on the Web:

www.wavendonparishcouncil.co.uk

Copy Date for September

(the Autumn 2019) edition:
Sunday 18 August 2019

Wavendon Parish Council

For any issues that you would like to raise with Wavendon Parish Council please contact, in the first instance, Parish Clerk - **Alan Kemp**

Wavendon Parish Council Clerk
alanj.kemp@btinternet.com

Address

57 West End, Long Whatton,
Loughborough, Leicestershire, LE12 5DW.

Phone Contact

HOME 01509 844241

MOBILE 07783 939020

Wafas & Wallas is printed by
bespoke media 01234 720105

Village Contacts

Wavendon Parish Council



Cllr David Hopkins *(Chairman)*

Cllr Susan Moroz

Cllr Yogini Thakker

Cllr Arthur Braddish

Cllr David Ostler

Cllr Robert Hill *(Vice Chairman)*

Cllr Ron Jamieson



**Looking to hire
the Wavendon Community
Centre?**

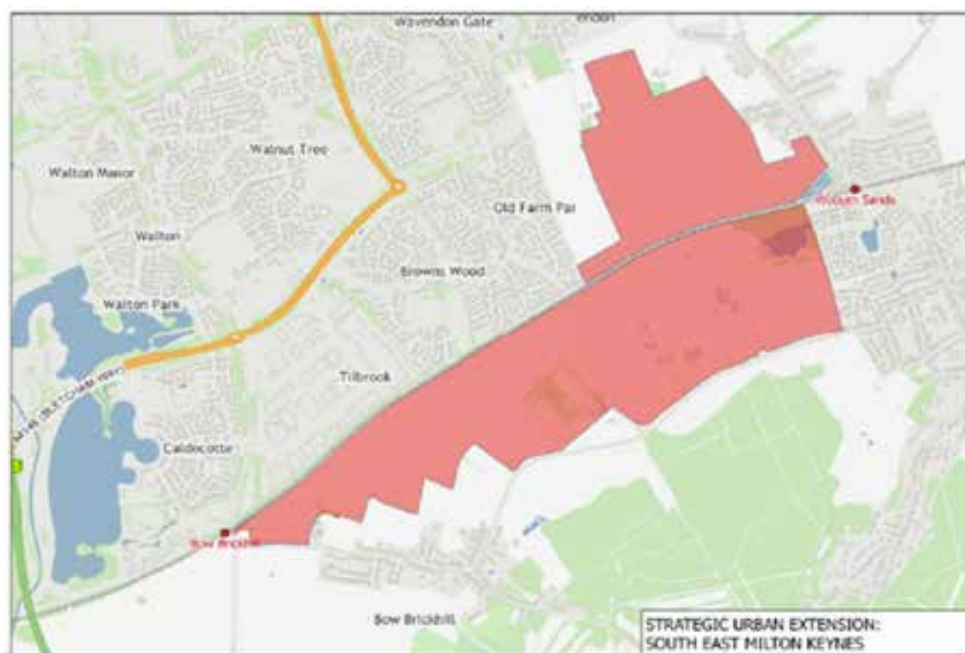
Contact Susan Hopkins

Hall Manager:

T: 07512 685198

The South East Milton Keynes Expansion Area

South East Milton Keynes Strategic Urban Extension (or SEMK) is a draft allocation within the new local plan, Plan:MK, covering an area of land approximately 210 hectares in size encompassed by Tilbrook, Browns Wood and Wavendon to the North, Woburn Sands to the East, the Greensand Ridge to the south, and Bow Brickhill to the west. The Planning Inspector (Plan:MK) also ruled that no development would be permitted on the SEMK site until 2023 at the earliest to allow a decision on the route of the planned Expressway to be agreed.



The draft allocation within Plan:MK, under Policy SD13, allocates the land for around 3,000 homes, 7 Gypsy and Traveller pitches, and a range of social and green infrastructure provision.

Plan:MK was adopted (made) by MK Council on 20 March 2019.

Cranfield Road Bridge Closure

A421



To extend the permanent bridge on Cranfield Road, CBC needs to close it from **13 May 2019**. The bridge is expected to be closed for up to 12 months whilst the improvements are done. CBC is working with contractors to reduce this period, if possible. The project is a Central Bedfordshire Council Project.

Residents concerned about road signage should email

Michael Williams
at CBC at Michael.Williams@centralbedfordshire.gov.uk

Project Manager A421 Dualling Highways, Community Services
Central Bedfordshire Council Priory House,
Monks Walk, Chicksands, Shefford, Bedfordshire, SG17 5TQ
Direct Dial: 0300 300 6315



Reporting Issues to

Milton Keynes Council

Issues that need to be reported to Milton Keynes Council can be done via the link noted below. This covers reporting items such as street lamps, waste and recycling, missed collections, defect on roads/potholes etc.

**[www.milton-keynes.gov.uk/
pay-report-apply/report-it](http://www.milton-keynes.gov.uk/pay-report-apply/report-it)**



**The 20mph
Zone is now
in place
on Parklands,
Woburn Sands**

Oxford - MK-Cambridge Expressway

| Date | Event |
|-------------|---------------------------------------|
| Autumn 2019 | Public consultation on route options* |
| 2020 | Preferred route announcement* |
| 2025 | Construction starts* |
| 2030 | New link opens to the public |



**Indicative timetable, subject to preferred route options*

Oxford To Cambridge Expressway Team - National Infrastructure Programme

Highways England | Woodlands | Manton Lane | Bedford | MK41 7LW

Web: <http://www.highways.gov.uk>

Waste Recycling bags



MKC still provide these free to residents but no longer deliver them automatically every so often to houses. Instead you need to either go on line to **MKC website** and **register**, or ring **01908 252570** to order more.



OVER 60's MONTHLY OUTING 19 JUNE

In every month except **January, February** and **November**, the Woburn Sands Town Council along with Wavendon and Bow Brickhill Parish Councils organise and subsidise a coach trip to a great variety of places of interest. These are usually held on the third Wednesday of the month and tickets booked via the relevant parish clerk.

The Coach will leave Wavendon at 9.00, pick up at Woburn Sands outside Fish & Chip Shop, outside Tesco's and The Leys bus stop.

The next pick up will be at Bow Brickhill, Station Road, at Greenways.

The next outing will be 19 June to Stratford upon-Avon.

To book contact:
l.stapleton@wstc.org.uk



WOBURN SANDS COMMUNITY MARKET DATES

A Community Market is held in Woburn Sands on a bi-monthly basis on the **2nd Saturday** from **10:00-12:00** **February, April, June, August, October** and **December** around the Institute and Memorial Green (Woburn Sands High Street).

This is a market for locally produced food and crafts and is run by volunteers and some Councillors.

Snippets for Summer

SOUTH CALDECOTTE DEVELOPMENT FRAMEWORK SUPPLEMENTARY PLANNING DOCUMENT (SPD)

PLANNING



South Caldecotte has been allocated for employment development in Plan:MK. The Development Framework SPD will provide detailed guidance on the development of the site. An eight week consultation opened on 8 May 2019

The consultation documents and further information on this consultation can be accessed online at: <https://www.milton-keynes.gov.uk/consultations>



LOCAL HISTORY - WAVENDON PUBLIC HOUSES

Completed research about the Red House, the Plough, the Wheatsheaf and the Leathern Bottel (Wavendon Arms) has been added to the local history website at www.mkheritage.org.uk/wsc/

They can be found under the Pubs and Inns menu. There are a couple of other buildings that have been used as inns or beer-houses way back, so I would be pleased to hear from anyone with any information. Paul Cox - e. hogstyend@btinternet.com

Combating Summer Crime

Although there are no particular crimes or trends prevalent in the communities of Danesborough and Walton, it's the perfect time of year to give advice and tips to avoid becoming a victim of crime over the summer months. ***By following and sharing this advice, your chance of becoming a victim is greatly reduced.***

Now that summer is on the way people can become complacent about home security. The most common cases of opportunist summer burglary involve offenders that:

- enter an insecure front door while residents are in the back garden
- enter doors that are closed but unlocked at night while residents are asleep
- reach through windows to take valuable items

Crime reduction advice

- Ensure that windows and doors are closed and locked when you are out. Don't leave small windows open believing them to be safe.
- If you want to leave windows open while you sleep, fit window restrictors so they cannot be fully opened, or make sure they are not large enough to allow access to a burglar.
- When out in your garden ensure that windows and doors to the front of the house are secure. It only takes a second for someone to get into your home and take things without you noticing.
- Do not leave valuables on display in front of windows or in reach of open windows or doors.
- Ensure that all barbecue and garden equipment and tools are securely locked up in a shed and out of sight. Tools can be used by the potential offender to break in to your home.
- Consider fitting outside security lighting or a visible alarm to help deter burglars. Even using pea shingle or gravel on a driveway and spiky plants in garden beds can help.
- Don't leave any keys near entry points where they can be 'fished' or 'hooked' out through the window, letter box or cat flap.
- Ensure any internal handle operated locks on UPVC doors are fully secured with a key.

Sheds – Easy pickings?

Offenders see sheds as easy pickings because they are unprotected and lack basic security measures. The buildings often contain property that can be sold on or implements that can be used to force entry into the owner's home.

▪ Many sheds whilst being of good construction fall short on basic security.

▪ It is easy to unscrew the ironmongery, steal contents and in some cases replace the screws to make it look as if the shed has not been tampered with.

▪ By using tamper proof screws or coach bolts together with a good quality pad bar or hasp and staple and close shackled padlock, the shed owner will make it harder for the would-be thief.

▪ It is also a good idea to bond any window glass in, with mastic to prevent easy removal.

▪ Ensure all tools and equipment are locked away when not in use.

▪ High-quality locks should be used on doors. Windows can be fitted with a grille or, as a cheaper alternative, chicken wire, to slow a thief down.

▪ A shed alarm can also be installed.

▪ Post-coding or indelibly marking all property such as lawnmowers, bikes, and tools using ultra-violet pens, forensic marking such as Selecta DNA or Smartwater or engravers.

▪ Installing security lighting as a deterrent, and plants such as thorny shrubs to act as a barrier at potential access points.

▪ If building a shed, putting it where it is most visible to you and neighbours.

Going on holiday?

▪ Make your home look occupied.

▪ If you're out or going away, ask a trusted neighbour to open and close your curtains for you.

▪ Ask a neighbour if they don't mind parking their car on your driveway and trimming your garden to make your home look occupied.

▪ Cut the front and back lawns before you go away and trim any plants that burglars could hide behind.

▪ Cancel milk and newspaper deliveries.

▪ Before your holiday, don't advertise that you are going away on Facebook, Twitter etc.

▪ Register for the Royal Mail 'Keepsafe' service.

Your Neighbourhood team of PC Tony Deeble, PCSO Rob Dabnor & PCSO Naomi Wenn will be attending events throughout the summer so please come and see us and say hello.

OPPORTUNITIES FOR EXTENDING HEALTH & WELLBEING IN WAVENDON

NEW PLAYING FIELDS

New playing fields and accompanying community building and car parking.

Opportunities for organised sport (football) covering all ages as well as general exercise, fitness trail, village pond etc.

NEW SPORTS HALLS

Large new hall and additional hall availability at former school site.

Opportunities for organised exercise/fitness classes, and further development of disability football.

NEW FULL SIZE 3G ARTIFICIAL SURFACE

An all weather surface enabling usage by all ages, but particularly the development of over 55's walking football.

NEW TENNIS COURTS

Redevelopment of school MUGA and addition of new hard surface tennis courts at Wavendon Recreation Ground.

Opportunities for all ages to engage in healthy outdoor exercise. Will help ease the shortage of "pay and play" tennis in MK.

WAVENDON WALK

Marked by two new wall monuments at either end, a safe and scenic one mile route between the older Wavendon to the new Wavendon settlement.

Opportunities for individual or group fitness initiatives.



Large Strategic Grant

Large Strategic Grant awarded to The Stables by MK Community Foundation!

MK Community Foundation are delighted to award The Stables Theatre in Milton Keynes a Large Strategic Grant of £95,000. The grant, which will be awarded over two years, will be used to fund an extensive programme designed to enhance the organisation's approach to working with D/deaf and disabled communities as participants, audience members and performers.

The Stables will work with national accessibility and disability specialists including Attitude is Everything and Graeae Theatre Company to create a bespoke training programme for The Stables' staff and its 200-strong volunteer base, and will also open up sessions to the wider cultural sector.

Jenny Sealey, Graeae Theatre's Artistic Director, has been appointed as Artist-in-Residence for next year's IF: Milton Keynes International Festival (17-26 July 2020) and will work with The Stables to build inclusivity into their future work, by creating an accessible and high quality programme for disabled artists.

To enable The Stables to reach out more effectively to local communities, an Engagement Manager will work with groups in Milton Keynes to breakdown some of the barriers to attending the arts. Specialist digital and technology systems will also be developed and tested with a view to improving access to live music events for disabled customers. The training, digital systems and artistic programme will be rolled out during next year's Festival.

MK Community Foundation are excited to be a part of this project which ultimately aims to ensure more people are able to enjoy the arts and to offer D/deaf or disabled people more creative opportunities by presenting positive role models and accessible workplaces and venues.

Monica Ferguson, Chief Executive & Artistic Director of The Stables said: "This is an important investment in our ambitions to enable us to engage with more people in exciting new ways, and we are immensely grateful to MK Community Foundation for their support and enthusiasm in helping us to work with some of the UK's most inspiring artists and organisations."

Funding for this programme comes from National



Lottery Community Fund and the Margaret Powell Foundation Fund.

For further information please contact
Hannah Meara

**Hannah.meara@
mkcommunityfoundation.co.uk**
or call **01908 393014**



Time to spare?

Are you looking for something new to do?

If so, and you are over 21, be part of the Rotary Club of Woburn Sands & District, where a friendly welcome awaits.

We meet at **The Moore Place Hotel, West Hill, Aspley Guise, Milton Keynes MK17 8DW** on the 1st & 3rd Thursday of the month at 7.00pm.

Rotary creates new friendships and opportunities to help others whilst having fun. Willen, Ride High, Night Shelter and others have benefited from our efforts so far.

So why not come along and meet us...

EVERYONE IS WELCOME

Bring along your partner or a friend

Need further information?

Anne - Tel. 07339 406766 Email - woburnsandsrotary@gmail.com



St Mary's Wavendon



Welcome to your new home on Eagle Farm!

Pupils at our current St Mary's School site in Wavendon Village took part in a competition with David Wilson Homes and Barratt Homes to design cards welcoming new residents to Eagle Farm, which from September 2019 will also be the location of our brand new school. The two winning entries, designed by our pupils, will be delivered to each new home on the Eagle Farm development. If you would like your child to join St Mary's Wavendon CE Primary School at the new Eagle Farm development from September 2019 do contact us on: **01908 582182** or Anne Paterson at: **officestmaryswavendon.milton-keynes.sch.uk** for further information.

Travellers - MK Council Action

If an encampment is on public land (land owned by MK Council, MKDP or The Parks Trust) MK Council will visit the site quickly to assess the situation and gather any evidence needed.

Police responsibilities

MK Council work closely with Thames Valley Police to agree the best way forward on unauthorised encampments. The police may use powers under Section 61 of the Criminal Justice and Public Order Act 1994 to remove trespassers only if there is a significant impact to the local community or other users of the land, impact upon the land, a significant increase in local crime directly attributable to the encampment, or a risk to life. The police are also bound by the Human Rights Act. It is for the police alone to decide whether Section 61 should be used.

Dealing with anti-social behaviour

While many unauthorised encampments are



Annual Litter-Pick

The annual litter-pick around Woburn Sands was a great success.

We collected a total of 14 bags of litter, which we stacked just inside the gate at the Memorial Hall. We worked in three teams:

Team 1, led by David Hopkins, looked after *High Street, Station Road, Rec.*, and a few other bits to the sides;

Team 2, led by Peter Skelton, did a wiggly loop around the western side (*Hardwick Road, The Leys, start of Bow Brickhill Road, Theydon Avenue plus footpaths, Wood Street plus Asplands, Hardwick Close plus Mowbray Green and Chapel Street*); and

Team 3, tackled the eastern bits (*start of Aspley Hill plus Downham Road, Vicarage Street, Club Lane plus Greens, Russell Street, and lower Weathercock Lane and around Fulbrook*).



short and cause minimal disruption, others can have a high impact on the local community.

Report a crime associated with an encampment to Thames Valley Police at: **www.thamesvalley.police.uk** or on **101**

Milton Keynes Council and Thames Valley Police will take action against individuals responsible for anti-social behaviour, working together to consider what kind of action is best for each situation.

Report an unauthorised encampment to MK Council at:

www.milton-keynes.gov.uk/pay-report-apply/report-it



Woburn and Wavendon Football Club

COMMUNITY CLUB STATUS ACHIEVED

WWFC is now officially recognised by the FA as "among the country's best". We are delighted to have attained FA Charter Standard **COMMUNITY CLUB** status, the highest level of accreditation achievable.

This certifies that the Club upholds the highest values that appeal to players, coaches, officials and supporters, and demonstrates to our community that WWFC offers a place where anyone can enjoy football in a safe and well organised manner. It also places the Club at the forefront of significant national involvement and investment as we strive to both sustain and develop WWFC whilst delivering a framework for future community integration and participation.

None of this would be possible without the and the huge commitment from all managers, coaches, volunteers and players. Also a huge thank you to our commercial partners for backing we receive and to Wavendon Parish Council for all their support and encouragement.

Our community is developing and changing fast. We're ready to play an important part in delivering healthy and inspired communities for the future.

INVESTING IN GRASSROOTS - LITERALLY

The drought of 2018 took a huge toll on a number of WWFC's playing locations. Pitches on some of our sand based soils dried out, and the grass never truly recovered.

As part of the FA's Pitch Improvement Programme, WWFC looks to improve both the quality and robustness of all our playing surfaces.



The aim is not only to reduce postponements, but also to increase participation levels on surfaces delivering the best quality football experience.

At Wavendon Recreation Ground, a regime of regular cutting, aeration, weed control and fertilisation has delivered excellent playing surfaces this season.

Overall the Club continues to invest £1000's each season, with specialist deep seed drilling and fertilisation part of the programme this season. The demand for girls' and boys' football has never been greater, and in order to deliver sufficient supply, we're striving to maintain the highest standards for playing surfaces.

GET INVOLVED

With nearly 500 playing members and approaching 40 teams from Under 6 through to adult – mixed, male, female and disability- there are many opportunities for Wavendon residents to get involved. Grass cutting and pitch maintenance is just one of the ways to help out.

Find out more by emailing:-
getinvolved@ww-fc.co.uk



You are warmly welcomed to a Summer Concert with

Canzonetta Singers

St. Mary's Church, Wavendon
Thursday 11th July 2019 at 7.45pm

Canzonetta Singers invite you to a musical evening of
Bavarian Highlands by Elgar and Requiem by Chilcott.

ALL WELCOME! Free entry, light refreshments
and a retiring collection with all donations
going to St. Mary's Church.



QUIZ NIGHTS

Monthly on Tuesdays
7.30pm-9pm
St Mary's Wavendon
21st May
18th June, 16th July



£1 per person / Teams of up to 6
Bring your own drinks and nibbles
Winning team takes ½ of entrance monies

Just turn up!

Wavendon
Village

Fete

Saturday

6th

July

2 - 4 pm

on the Rec

Hosted by and in aid of
St Mary's
School & Church

FUN

for

Everyone

(with added cake)

All welcome

Project Board to Deliver New Leisure & Community Facilities

Milton Keynes Council, in partnership with Wavendon Parish Council, has set up a Project Board to deliver new leisure and community facilities for residents of Wavendon and the Strategic Land Allocation area.

The facilities will comprise of a new multi-purpose community building and multiple grass sports pitches.

The new building, which is still to be designed, will be conveniently located adjacent to the proposed sports pitches that are soon to be constructed off Stockwell Lane. Please see the map.



Funded by housing developer contributions, the new facilities that are expected to be constructed in 2021/22 are being provided to ensure that new residents moving into the Strategic Land Allocation have access to facilities that enable them to lead socially and physically active lifestyles.

Project updates will be provided regularly via the Parish Newsletter. However, if you require any further information please contact the clerk of the Parish Council.

From Our Local PC Tony Deeble

Residents can have their say on local issues of concern at the following meetings which are all scheduled to take place at:

MK SNAP on Bourton Low, Walnut Tree, Milton Keynes, MK7 7DE on the following dates;

(all meetings start at 10.30 am).

June 6th

July 4th

August 8th

Sept 5th

The next Community Forum meeting is yet to be arranged. I will be speaking with the Chair, Ben Dawson before the end of the month with a view to arranging the next meeting before the end of June.

Contact: Tony Deeble | PC 218 | Milton Keynes Neighbourhood Policing Team South | NS Danesborough & Walton

Telephone 101
Mobile 07813 897 275

Address Fire Station,
Childs Way, Milton Keynes Village,
Milton Keynes.



Woburn Sands Festival
BACK FOR A 3RD YEAR!

6th July
1pm until 9.30pm

Please join us for a fun packed day of fantastic music, stalls, bouncy castles, bars, and food, & help us raise money for our 2 great charities MacIntyre & PTSD Resolution.

We look forward to seeing you there!

The Wavendon Volunteer Army



Last year Wavendon Parish Council supplied the WVA with 100 saplings to be planted on the Recreation ground and elsewhere in the village. A large number were planted but some were planted in a nursery bed for future planting.

The photo shows an area where dead trees and brambles have been cleared. We still need to dispose of old brambles and then commence planting. There are of course other jobs to be carried out in the village.

Once we have disposed of the rubbish planting of the saplings that survived last years hot conditions can commence.



If you want to join us look at the facebook page for the **Wavendon Volunteer Army** for dates and details of our next work detail and come along and join us. Good company, laughs and friendship as well as some work for our community.

HELP WITH HEATING BILLS

A long-established Charity in the Wavendon / Woburn Sands / Aspley Heath area **provides a grant towards heating bills for the less well-off**, for instance those on small fixed incomes, pensioners or people living with disability.

To qualify for a grant, applicants need to:

- have lived in Wavendon Parish, Aspley Heath or the town of Woburn Sands for at least one year;
- have an annual income which the trustees feel would qualify for a grant;

be prepared to provide, on the application form, details of their income and any additional financial support they receive. This information will be held in confidence and not disclosed to any other party:

Note: If approved, the award is paid directly to the applicant's energy supplier.

For an application form, please write or email, before 31st July 2019 to:

Mrs Susan Hopkins
80 Walton Road
Wavendon
MK17 8LW
Email – sueanne.hopkins@gmail.com



Do you know of anyone you think might qualify?

**IF SO, WE CAN FOLLOW UP!
PLEASE CALL PETER BALLARD
ON 01908 585855**



Prayer Walks

3rd Sunday
of every
MONTH

Summer 2019

Dates for your diary:

Meet outside St. Mary's at 2:30pm on:

- 19th May
- 9th June
- 21st July

We have already seen the fruits of our prayer walks over the past year. Please join us in our continued ministry of prayer for our newly developed areas in our community, as well as the more established ones. All welcome

Lisa



St Mary's
Church
Coffee Morning
Every
THURSDAY
8.45 - 12.00
in School Term
(Please check notices
for holiday opening)

OpenHouse@StMarys

Meets monthly
(2nd Mondays)
2-3.30pm
in St Mary's Church

Fellowship
with a Mission
Supporting your
community

Everyone is welcome



Where? We meet at Christ the King, Kent's Hill

Who? For ages 9-14

When? Fortnightly on Thursdays 7.00pm-8.30pm, alternating with Youth Club

Why? To learn about Jesus through games, activities and chat

Dates for Summer 2019:

2nd May, 16th May, (half-term break), 13th June, 27th June, 11th July, 18th July party

Where? We meet at Christ the King, Kent's Hill

Who? For ages 9-14

When? Fortnightly on Thursdays 7.00pm-9.00pm, alternating with Rock Solid

Why? To make friends and chill!

Is there a cost? Just £1 per session to cover snacks and drinks

Dates for Summer 2019:

25th April, 9th May, 23rd May, 6th June
20th June, 4th July, 18th July party

Friendship Club for Seniors

*Wavendon Village Hall
(opposite St Mary's Church)*

on

Alternate Tuesdays 2-4pm

Come & Join Us

Scrabble, Cards, Dominoes, Chat, Cake & a Cuppa

Contact Monica 01908 582844

or Alise & Matt 01908 582839

Next Meetings: 4th June, 18th June, 2nd July, 16th July



St Marys Wavendon C of E Primary
School and St Marys church
together bring to you...



St Mary's Wavendon Summer Fete 2019

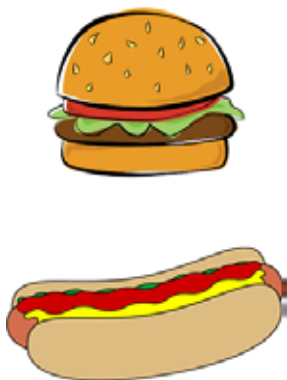


Please come along to our Summer Fete
on
Saturday 6th July 2019
from 2pm until 4pm
in the Wavendon Community playing fields



Attractions include –

Beat the goalie from the Woburn
and Wavendon Lions
Quintet Band to Woburn Sands
A raffle
Traditional stalls
A barbecue
Ice creams
Hot and cold drinks



We look forward to seeing you all there...