

# Wafas A N D Wallas

YOUR LOCAL PARISH MAGAZINE

[www.wavendonparishcouncil.co.uk](http://www.wavendonparishcouncil.co.uk)

February 2021

Welcome to the February edition of Wafas & Wallas – how much has changed over the past twelve months. Lots of information on the local situation regarding Coronavirus and how MK is addressing the pandemic. Also, lots and lots of planning activity across the Parish including some draft ideas of how the SEMK (Strategic Urban Expansion area) may look – look out for the details and consultation information within a forthcoming special edition.





## Wafas & Wallas – Your Parish Newsletter

### WINTER 2021 EDITION

**Editor:** *David Hopkins*

80 Walton Road | Wavendon | Milton Keynes | MK17 8LW

*There are articles from many of our partners in this edition. I do in particular want to take time to thank those in our community who have volunteered to act as Covid champions (<https://www.milton-keynes.gov.uk/your-council-and-elections/covid-19-in-milton-keynes/mk-covid-19-community-champion-scheme>) and the many more who are looking out for friends and neighbours in our community at this challenging time.*

**Wafas** AND *Wallas*

Printed & Published by  
Wavendon Parish Council  
on behalf of the people  
of the ancient Parish of  
Wavendon  
(including parts of  
Hog Sty End)

*I would also mention the Local Support Service which provides practical help to residents who are clinically extremely vulnerable and who have registered support needs through the National Shielding Service System.*

*Local GPs have identified that there are over 14,000 clinically extremely vulnerable people in Milton Keynes who would have received a letter advising them to shield. This groups have been advised to register any support needs through the National Shielding Support System (NSSS). Those contact details are then passed to the council to be followed up.*

*Residents needing support to self-isolate, who are unable to rely on the help of friends, neighbours or family, can register with the NHS Rep can also contact the support service by calling 01908 252398. Please note, this helpline is people who have no other support to turn to. Those with friends and neighbours who can help are asked to keep this resource free for people in need.*

*This is a unique addition of Wafas & Wallas produced at a challenging time in the history of our community. Keep well, take care and stay safe.*

**Copy Date**  
**for April/May 2021**  
*(the Spring 2021) edition:*  
**13 March 2021**

For any local issues contact me at;  
[David.hopkins@milton-keynes.gov.uk](mailto:David.hopkins@milton-keynes.gov.uk)

**Wavendon on the Web:**  
[www.wavendonparishcouncil.co.uk](http://www.wavendonparishcouncil.co.uk)

### Wavendon Parish Council

For any issues that you would like to raise with Wavendon Parish Council please contact, in the first instance, Parish Clerk - **Alan Kemp**

*Wavendon Parish Council Clerk*  
[clerk@wavendonparishcouncil.co.uk](mailto:clerk@wavendonparishcouncil.co.uk)

### Address

57 West End, Long Whatton,  
Loughborough, Leicestershire, LE12 5DW.

### Phone Contact

**HOME** 01509 844241

**MOBILE** 07783 939020

Wafas & Wallas is printed by  
**bespoke media** 01234 720105

### Village Contacts

*Wavendon Parish Council*



Cllr David Hopkins *(Chairman)*

Cllr Arthur Braddish

Cllr Robert Hill *(Vice Chairman)*

Cllr David Ostler

Cllr Ron Jamieson

Cllr Yogi Thakker

**Looking to hire the  
Wavendon Community Centre?**

**Contact Susan Hopkins**

**Hall Manager:**

**T: 07512 685198**

**E: [sueanne.hopkins@gmail.com](mailto:sueanne.hopkins@gmail.com)**



## From the Chairman of the Parish Council - *The challenges ahead*

**Buckinghamshire Council's coat of arms bares the moto 'We never go backward'.**

The wisest way to progress is to adopt all of those principles and rules that are in place to protect us all, and that most of us have been adopting for so many months already. It is that simple adherence to the rules that will give us the route out of this.

It's important more than ever to remain positive and optimistic about the future. Regardless of what you read in the newspapers or on social media or hear on the television or the radio, nationally we have the strategies in place that will ultimately help us to get COVID-19 under control and allow us the prospect of a return to our normal lives again.

*Despite the restrictions on our lives, this latest Lockdown will accelerate our sprint to the finish line.*

**It's important to recognise the good parts of our society throughout the pandemic.**

We enter 2021 as an independent and free trading nation which brings opportunities to innovate, create and inspire new industries.

Indeed, the pandemic has helped many to refocus their careers and their way of life to improve things for themselves and their families.

In Wavendon, we have shown the best of our community with neighbours looking out for each other and with access to our community hub we've been there for people who needed us the most. I have been inspired by those continuing to teach and care for our children at, for example, St Mary's Primary School and Little Oaks Nursery. Let us be inspired by their tireless commitment to help to see the future for us all through their eyes.

**Inspiration should be drawn from the good news of the last few weeks of the vaccination programme that has gathered incredible pace from a standing start.**

The British were the first to approve the Pfizer BioNTech vaccine, and the new Oxford AstraZeneca vaccine is homegrown. Now we have the Moderna vaccine due in the Spring. Each will protect millions



over the coming few months.

The country is developing new testing strategies that will help us to better identify where the risks are in our communities and help to stop the virus from spreading further. Ingenious systems that we have developed from scratch that help to save lives.

Here in Milton Keynes we have the experts in Public Health who are working tirelessly every day to identify outbreaks and to act quickly to keep them under control.

There's a lot of work happening to fight COVID-19 from spreading out of control. Most of that work takes place behind the scenes. It's our role now to protect the most vulnerable in our community and provide support and guidance for local businesses to help them through these difficult few months ahead.

Hope has been found in the simplest of things. We've started to more appreciate nature and residents are working to create a Wavendon Country Park between Cranfield Road and Newport Road.

With the stunning Perfect Planet series on BBC 1 we can see how our planet has adapted through time to provide all the necessary ingredients for survival and to thrive.

Many of us have found sanctity and joy from our gardens, our open spaces and from our immediate environment, the Greensand Ridge / Brickhill woods in particular. As we look forward to Spring, the season that brings new hope can help us to appreciate the abundances of colour our natural landscapes provide each year.

There are few better spectacles than a carpet of



bluebells on the woodland floor being lit by the sun from above. Our children can gain so much from the natural world so they should be immersed in it to learn even more.

And perhaps, given the cold start to the year, a brief and joyous event for our children could come with a period of snowfall. The weather! It's a subject matter I truly believe will once again take its rightful place as the number one talking point in British society!

**Cllr David Hopkins**

[David.hopkins@milton-keynes.gov.uk](mailto:David.hopkins@milton-keynes.gov.uk)

**Information on Coronavirus**

[https://www.milton-keynes.gov.uk/  
your-council-and-elections/  
covid-19-in-milton-keynes](https://www.milton-keynes.gov.uk/your-council-and-elections/covid-19-in-milton-keynes)

**Information from your Parish Council**

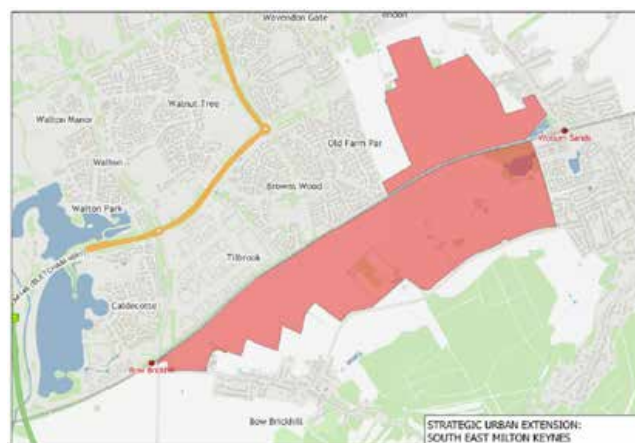
<https://www.wavendonparishcouncil.co.uk/>

**MK COVID-19 COMMUNITY  
CHAMPION SCHEME**

MK Council is calling on people throughout Milton Keynes to help us to reach their friends, family, neighbours, colleagues and thousands of other local people, with trusted information and advice related to COVID-19.

[https://www.milton-keynes.gov.uk/  
your-council-and-elections/  
covid-19-in-milton-keynes/  
mk-covid-19-community-champion-scheme](https://www.milton-keynes.gov.uk/your-council-and-elections/covid-19-in-milton-keynes/mk-covid-19-community-champion-scheme)

**South East Milton Keynes**



South East Milton Keynes Strategic Urban Extension (or SEMK) is a draft allocation within Plan:MK, covering an area of land approximately 210 hectares in size encompassed by Tilbrook, Browns Wood and Wavendon to the North, Woburn Sands to the East, the Green Sands Ridge to the south, and Bow Brickhill to the west.

The draft allocation within Plan:MK, under Policy SD11, allocates the land for around 3,000 homes, 7 Gypsy and Traveller pitches, and a range of social and green infrastructure provision.

[planning.enquiries@milton-keynes.gov.uk](mailto:planning.enquiries@milton-keynes.gov.uk)



**WOBURN SANDS  
COMMUNITY MARKET DATES**

A Community Market is held bi-monthly on the second **Saturday** from **10:00-14:00** - **February, April, June, August, October and December** around the Institute and Memorial Green (\*look out for signs confirming market days during the pandemic).

This is a market for locally produced food and crafts and is run by volunteers and some Councillors.



## Important update - Covid 19 vaccination and Woburn Surgery

We are seeing a rapid rise in Covid 19 cases across Milton Keynes and Bedfordshire. We are still open and working hard to look after our patients.

### Covid 19 vaccinations

We are very pleased that many of our over 80 year old patients have already been vaccinated at Milton Keynes hospital. Currently, we are getting ready to join the vaccination program so that we can get our patients vaccinated as quickly as possible. This has meant that we need to make some changes to the way we support you. Some appointments may need to be moved to facilitate the vaccination program. Please do not phone reception to check on your appointment or to ask when your vaccination will be, we will contact you.

### Woburn surgery update

From Monday 4th January Woburn Surgery will be open to patients and carers for medication collection only. We will continue to provide care and support for all our patients. If you phone Woburn Surgery the call will still be answered as we have a single phone system. In order to protect patients and staff from the more infectious new variant of Covid 19 we will continue to manage conditions by phone, online or video consultations where it is clinically safe to do so.

Face to face patient services and consultations will be provided at Asplands Medical Centre. Please be assured that we are following strict hygiene measures if we need to bring patients into the surgery to be seen.

This is a temporary change to our services so that we can continue to maintain a high level of care for our patients. On behalf of the team at Asplands

and Woburn, we are very grateful for your support and understanding.

### Contact the Practice

<https://www.asplandsmedicalcentre.co.uk/navigator/contact-the-practice/>

You can use this form to send a message to the practice. Your message will be passed to an appropriate member of staff for a response. We aim to respond to all questions within five working days.

Please do not use this service for any medical queries. If you need some advice from a Doctor please use the Ask a doctor a question.

Please note: If you have an urgent medical query you should telephone the surgery or contact the out of hours service by calling 111.

### Asplands Medical Centre

Tel: 01908 582069

Fax: 01908 281597



## MRS ROBINSON'S OUTING

Please note that the date for this year's outing (for residents over the age of 60 and living in the Ancient Parish of Wavendon), will be on **Tuesday 14th September 2021**, visiting **Stratford-upon Avon** with lunch included. For qualifying residents this is a free outing that takes place every year because of the generous bequest made in 1965 to the Parish Council by Mrs E L Robinson (a former resident).

THIS OUTING WILL ONLY TAKE PLACE IF THE CURRENT HEALTH EMERGENCY CONDITIONS HAVE BEEN LIFTED. MORE DETAILS ABOUT THE OUTING WILL BE PROVIDED IN A FURTHER EDITION OF THE NEWSLETTER.



# Greensand Country from your Home

As a resident of Wavendon you are in the fortunate position of also being a resident of Greensand Country.

Some of you will be aware of this beautiful and much loved landscape of the Greensand Country which is defined by the Greensand Ridge, a band of higher ground stretching from Leighton Buzzard to Gamlingay, which rises out of the surrounding vales to create a unique local environment.

Others of you may be completely unaware of just what is on their doorstep. The Greensand Country area contains all of Bedfordshire's remaining heathland, more than half of its woodland and 29 historic parklands. It is a landscape rich in wildlife and cultural heritage, with its own special qualities and sense of place. A 'green oasis' of peace and quiet, rolling countryside, breath-taking views and lots more.

In January 2017, a National Lottery Heritage Funded Programme was established to deliver up to 90 projects, helping to raise awareness of the heritage value of the landscape and to reverse the gradual decline in the distinct landscape character.

Led by a partnership of 24 organisations working together and co-hosted by The Greensand Trust and Bedfordshire Rural Communities Charity, the vision was for Greensand Country to be a living and working landscape that is cherished by present and future generations.

The programme has achieved a number of major milestones, from creating new walking, cycling and horse riding routes, to rebuilding sandstone structures, training apprentices in heritage and landscape skills and the creation of the ever-popular Greensand Country Festival, which will return in May 2021.

The festival, like many others this year, was curtailed due to the Covid-19 pandemic, however the Greensand Country Festival 2021 is determined to come back with a bang. The month long event will be a celebration of the area, which encourages those living within the landscape to get out and explore the outstanding countryside on their doorstep.

Watch out for a comprehensive festival guide being delivered to your door. This guide not only covers the festival but the entire Greensand Country experience, giving you lots of ideas of where and what to explore for the whole of 2021.



Due to the Covid-19 lockdown people have been spending more time outside and this has been a great opportunity to explore the local landscape. Greensand Country has numerous trails available to cycle, run or walk which will take you into the heart of the countryside. But there is so much more.

There are numerous hidden gems to find and explore. Use the Greensand Country interactive map (Interactive Map | Greensand Country) to plan your day out. There are places to shop, eat and drink. Why not support local businesses, by enjoying great experiences and discovering unique products in Greensand Country. Stop off at a pub or tearoom after a day of walking to enjoy locally sourced, and home cooked food. Or shop for antiques and unique handmade crafts in one of Greensand Country's picturesque villages.

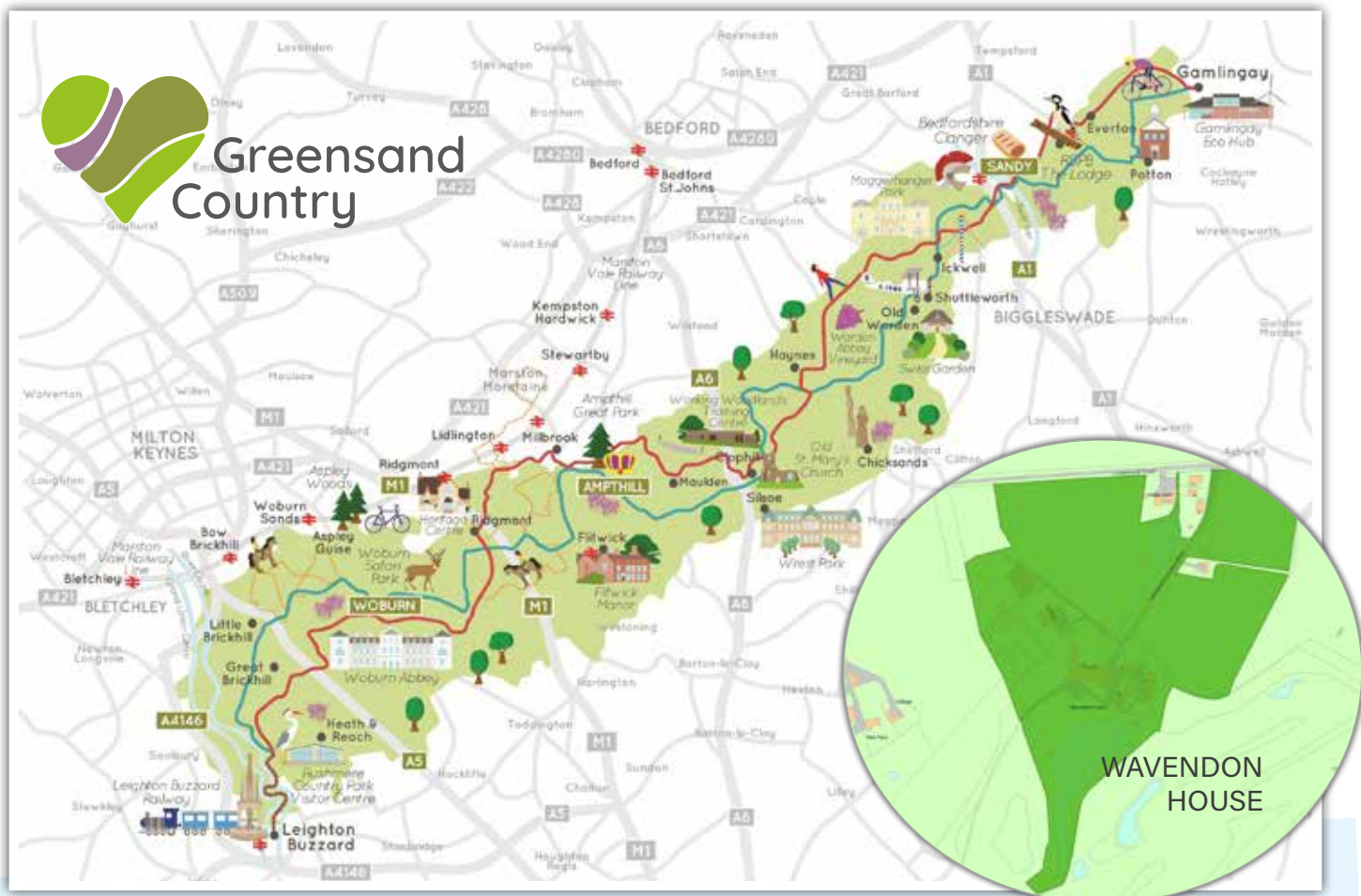
For a fun day out with the kids you could visit Leighton Buzzard Narrow Gauge Railway. This is one of the last survivors of 2 foot (610mm) gauge light railways built in Britain for industrial use.

There is also beautiful Moggerhanger House and gardens. This grade 1 listed Georgian House is located in 33 acres of stunning park and woodlands.

Or if you prefer to connect with nature you could try otter spotting on the River Flit. If you're lucky you might see an otter hunting in the river, or signs that an otter is nearby. Look out for bubbles under the water or slipways made by the belly of a sliding otter.

**Greensand Country is a place where people feel able to slow down, unwind and connect with nature. Somewhere to escape urban life, breathe easy and feel uplifted. Come and discover it for yourself!**

To find out more go to  
[www.greensandcountry.com](http://www.greensandcountry.com)



## Tackling the Climate Emergency at the local level

### New carbon footprinting tool for parish councils

Over the next six months, and in partnership with Midlands Energy Hub, CSE have been developing a tool that will enable parish councils and local communities to estimate baseline carbon emissions for their area. This will be calculated using information about energy use, travel behaviours and the consumption of goods and services modelled at household level and scaled up to better reflect individual communities.

Representatives of Wavendon PC and Woburn Sands Town Council sat in on a (virtual) briefing in January and will be examining how, by working together to combat some of the local elements of the climate emergency, they might best utilise this analytic tool.

The tool will enable the development of meaningful and locally appropriate carbon reduction strategies by parish councils that allow them to support their senior (Unitary) councils with well-targeted activity that focuses on big-emissions sectors rather than spending time on well-meaning but low-impact activities. It will allow users to test out a number of scenarios designed to demonstrate the potential

impact of different projects on their overall carbon footprint.

Parish council responsibilities can include planning, traffic calming, community transport, street lighting, allotments, bridleways & footpaths, car parks, commons and open spaces, leisure, litter bins and street cleaning, tourism and youth projects.



CSE's Annette Lamley said, "To tackle the climate emergency, we need the involvement of all levels of government, from the commanding heights of Westminster down to parish councils. The latter have a critical role to play being uniquely placed to inspire grassroots movements, set a leadership example and deliver practical local action.

And we know from the many requests for assistance that CSE receives from parish councillors that many are determined to play their part. So we're hugely encouraged by that BEIS (Department for Business, Energy & Industrial Strategy) has recognised the role of parish councils and is funding a project to develop a community-level footprinting tool."

# The new school campus at Glebe Farm in Wavendon



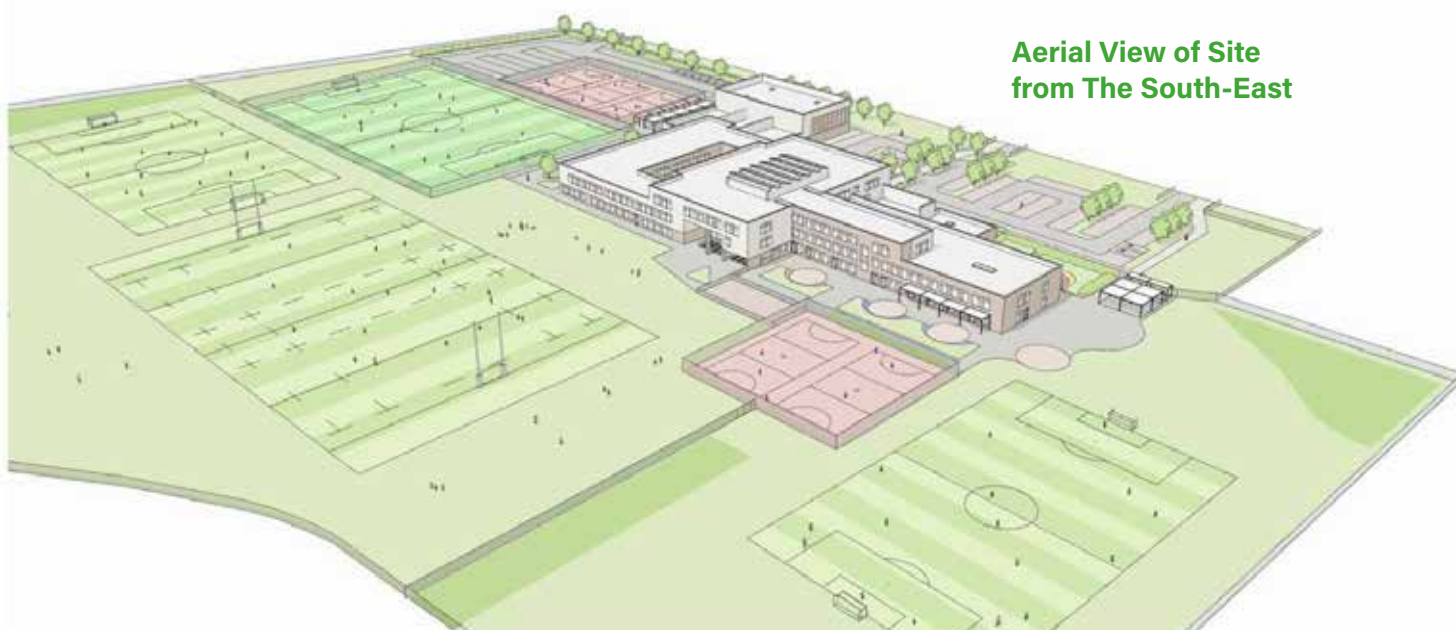
**Inspiring Futures through Learning (IFtL)**, a Multi-Academy Trust currently operating 13 primary schools across Milton Keynes and Northamptonshire, are delighted to become part of the Wavendon Parish community as we prepare to open the new all through school at Glebe Farm. Due to open to reception, year 1, year 2 and potentially year 7 pupils in September 2022, we are excited to develop a vibrant and positive presence within the community, providing excellent education and community facilities. The school will continue to grow to its full capacity for 3-16 year olds over the next few years.

The design for our new school is well underway and was approved by MKC's planning department in December 2020. The school contains innovative spaces for learning within an exciting curriculum including sports, music production, science and creative and performing arts. In addition, a purpose

built entrance will make it easy for the sports facilities, including sports hall, fitness suite and 3G pitches, to be accessed and used in out of school hours by our whole community and we look forward to working with community groups to ensure a full offering is hosted on site.

Commissioned by Milton Keynes Council and delivered by developers Morgan Sindell, building work will start to take place on site by the end of February 2021. IFtL, in partnership with these organisations, look forward to keeping you up to date and engaged with the developments over the next 18 months as our new community school 'appears' out of the ground!

If you have any comments at all, please contact IFtL through the Contact Us section of our website ([www.iftl.co.uk](http://www.iftl.co.uk)) or via telephone on **01908 533283**.



**Aerial View of Site  
from The South-East**

## From the Wavendon Volunteer Army

### HAVE YOU SEEN A HEDGEHOG?

*Probably not!*



Like many animals they are threatened by human activity!

A third of the population has been lost since the year 2000 and probably reduced by 90% since the 1960's

We can help by creating highways in our gardens, leaving food and water in accessible places.

An initiative has been launched by the peoples trust for endangered species and the Hedgehog trust called **"Hedgehog Street"**.

**Search for Hedgehog Street and download the information. Help create a joined-up community for our Hedgehogs to give them a chance to survive.**

We can help with simple actions just by creating a hole in your boundary big enough for a hedgehog to move through.

Join us now and help protect the remaining hedgehogs so your children and grandchildren can see them in real life rather than on a page in a book or a Zoo!



The WVA installed, with the permission of the Parish Council, shelving in the Bus Shelter on St Mary's Green.

We aim to start a **free seed swap** as soon as circumstances allow. Covid has meant that many of us are spending more time in our gardens or allotments and growing flowers and vegetables has never been so popular.

Many of us will have found that we have seeds left over. Rather than throw them away place them in the seed swap containers on the shelving and help yourself to something that was surplus in someone else's garden ideas?

The idea can be expanded to include spare plants perhaps?

The Wavendon Volunteer Army {WVA} will post on our Facebook page once the idea goes live, with seeds in trays. This will also be published on the WAVES Facebook page.

Or if you are passing just have a look and see what's available.

**We hope you can make use of the seeds and have a happy growing season in 2021.**

**Contact:** Jim Pittman  
[e.japthm@outlook.com](mailto:e.japthm@outlook.com)



## Snap and Buses



**There's always something good to come from something bad. That's a mindset I subscribe to. And while 2020 has been particularly bad, there must be something good we can take from it.**

This year has mixed things up, including 'the way things are done.' Putting things back together can often mean we gain in unexpected ways.

Since the pandemic began, use of public transport (ridership) has changed. Department for Transport stats show rail use dropped as low as 4% of typical and bus use dipped to 11% recovering only to 47% on average October into November.

An RAC survey in November shows reluctance to use public transport in the future at its highest level in 18 years.

So, with buses having under half of the pre-pandemic ridership and a forecast this won't be recovering soon, 'the way things are done' needs to change.

Enter Demand Responsive Transport While MK was growing back in the 1960s, the population was too spread out for scheduled bus services. Residents could call up and order a minibus – 'Dial-a-Bus' which would then group people together and go.

This is a similar challenge to what is faced today.

Current bus use and subsidies are unsustainable.

Milton Keynes Council has been looking to our heritage and the Milton Keynes vision for inspiration. Demand Responsive Transport (DRT) – a new 'Dial-a-Bus' seems like an answer. DRT is a 12 person minibus service that meets you. Designed to pick up at existing bus stops, it can divert 'off route' if needed. Book your journey via an app or over the phone. You'll be

matched with other passengers heading in the same direction within a maximum 'wait time.'

There's a current trial of DRT covering the number 28's route. Anything learned will be included in the main roll-out.

### How does this affect our area?

From April 2021, MK Council wants to introduce DRT to replace unprofitable routes. In our area, the number 8 is commercially solid and should continue (perhaps with changes to early and evening services). However, the 9, 11, 17 and 12 are less commercially viable and could be replaced with DRT.

While plans aren't finalised, DRT could save MK Council a substantial amount of bus subsidies without compromising availability or accessibility.

In the future, DRT would also feed into the proposed mass rapid transport 'MRT' network.

This would be several hub 'stations' around MK where high speed buses or trams whizz people to major destinations. Imagine a DRT dropping you at Kingston then a fast ride to the town centre.

### What about now?

While consultations are on-going, we'd love to hear your suggestions or concerns how this might impact or benefit you. We're talking directly with the Councillors and teams responsible and before the new year is the time to shape what we need for our area.

Contact Wavendon Parish Council Clerk [clerk@wavendonparishcouncil.co.uk](mailto:clerk@wavendonparishcouncil.co.uk) to let us know your thoughts.

### MK Snap

MK SNAP is an award-winning charity based in Walnut Tree, working with adults with learning disabilities across MK and surrounding areas.

At the end of November, we celebrated the huge honour of the charity being awarded The Queens Award for Charity; this is the highest award that the Queen can bestow and is the equivalent of an MBE for charities. We are pleased to say that we remain open during this latest lockdown and we are looking forward to welcoming back some of our learners that have been at home during the summer from the first week of December.

Our priority is the safe and organised return of our learners to SNAP. We are running a #SpareChange campaign to help raise vital funds for the charity as part of the birthday celebrations for Blu the SNAP Dragon. If you have any spare change that you would

like to donate we have a special collection point in the lobby at the centre in Walnut Tree for you to use; any support you can give is gratefully received, plus it's a great way to tidy up any pennies that are in drawers and down the back of the sofa!

**Alternatively, visit our website**  
[www.mksnap.org/donate](http://www.mksnap.org/donate).

The learners at MK SNAP are also creating some amazing festive handmade products which will be on sale soon.



## Brooklands Health Centre

### 01908 874444 - COVID-19 Vaccinations

The NHS COVID-19 vaccination programme has started in the UK. Vaccinations are being delivered according to priority groups identified by the Joint Committee of Vaccination and Immunisation (JCVI).

**When it is the right time for you to receive the vaccine, you will receive an invitation to come forward. Please do not contact us to get an appointment, we will contact you.**

Information on the vaccine is available on the NHS. UK website. For anything else, your GP practice is open and if you need to get in touch, please ring call us or book an appointment online.

#### Adults over 50s flu vaccination

As part of the Government's expanded flu immunisation programme, adults over the age of 50 will be able to get their free flu vaccine from 1 December 2020. We will be contacting you to book this appointment. Please note that you also may receive a call from the NHS Immunisation Management Service reminding you to book your flu jab, this is a legitimate service and not a fraudulent call.

**All flu clinic appointments must be pre-booked by telephoning the surgery on 01908 874 444.** The following patient groups are eligible for vaccination:

•Patients 65 years and over;

- with certain long-term health conditions;
- are pregnant;
- are in a long-stay residential care;
- receive a carer's allowance, or are the main carer for an older or disabled person who may be at risk if you get sick;
- live with someone who's at high risk from coronavirus (on the NHS shielded patient list);
- frontline health or social care workers.

For information about the children's flu vaccine please visit.

#### Face coverings

As per the Government guidelines, all patients aged 11 or over visiting the surgery will need to wear their own face covering at all times while inside the surgery. A cloth face covering should cover your mouth and nose while allowing you to breathe comfortably. It can be as simple as a scarf or bandana that ties behind the head. Please visit <https://www.gov.uk/government/publications/how-to-wear-and-make-a-cloth-face-covering>. Thank you for your cooperation.

#### Online registrations

Thank you to those patients who have recently registered with us online. We apologise for the slight delay in processing these and thank our patients for their patience whilst we continue to adapt the way we work in response to COVID-19. We can confirm all online registrations are now being processed, those who have sent in their documents, have been registered and able to book appointments with us.

<https://www.brooklandshealthcentre.nhs.uk/page1.aspx?p=4&t=1>

# Explore Greensand Country

Explore the distinct, beautiful and loved Greensand Country. Greensand Country is a beautiful and loved landscape. It is defined by the Greensand Ridge, a band of higher ground stretching from Leighton Buzzard to Gamlingay, which rises out of the surrounding vales to create a locally unique environment. Greensand Country contains all of Bedfordshire's remaining heathland, more than half of its woodland and, as a proportion of the area, is made up of more historic parkland than any other place in England.



## On Foot

Walking is an ideal way to get to know Greensand Country and experience what it has to offer. When on foot you are closer to nature and able to take in the views, soak up the landscape and enjoy the physical health and mental wellbeing benefits associated with exploring the great outdoors. The Greensand Ridge Walk is the area's most famous route, running for more than 40 miles between Leighton Buzzard and Gamlingay.

A number of new routes have been created, in partnership with Central Bedfordshire Council, Friends of Flitton Moor and Bedfordshire Geology Group, to help local residents, including those new to the area, to explore the landscape on their doorstep.

### These include:

- **Katherine's walk** (8.5 Miles circular route from ampthill)
- **Ouzel valley meander** (4.5 Miles circular Route from leighton buzzard)
- **The weneslawe walk** (8 Miles circular route from potton)
- **Flit valley walk** (7 miles linear route from Westoning to silsoe)
- **A number of historic parkland walks**, including a 4 miles circular walk from aspley guise
- **Geo trails from rushmere country park**, maulden and sandy.

Find further information and search these routes and more via our interactive map at  
[www.greensandcountry.com/explore/walk/](http://www.greensandcountry.com/explore/walk/)



## On Bike

Cycling is popular in Greensand Country, where quiet lanes and ever-changing scenery make for great days out by bike. There are plenty of level stretches for leisurely rides, as well as challenging climbs for seasoned cyclists and a network of off-road routes that remain passable yearround, thanks to the area's sandy soil.

Accompanying the famous Greensand Ridge Walk, the **Greensand Cycleway** runs the length of the area, covering more than 40 miles between Leighton Buzzard and Gamlingay. It's a great ride to enjoy in one go, but you may prefer to split it into shorter sections or ride one of the circular routes that branch off the main Greensand Cycleway.

In partnership with Sustrans and Central Bedfordshire Council, new cycling routes have been created to help you to explore more of Greensand Country by bike:

- **Stone Way** (15 miles circular ride from Maulden)
- **Heath Way** (15 miles circular ride from Rushmere Country Park)
- **Abbey Way** (15 miles circular ride from Old Warden)
- **Parkland Way** (19 miles circular ride from Woburn)

Find further information and search these routes and more via our interactive map at  
[www.greensandcountry.com/explore/cycle/](http://www.greensandcountry.com/explore/cycle/)



## On Horseback

Horse Riding is a fun way to explore the landscape and the sandy soil of Greensand Country makes it the perfect place for hacking along greenways and bridleways, many of which are dry and mud-free even in winter.

The British Horse Society has worked with local organisations to create five new circular horse-riding trails, including:

- **Warren Ride** (4.5 miles, with option to shorten to 3.5 or to extend to 12, from Steppingley)
- **Aspley Ride** (7 miles, with option to extend by 4, from Aspley Heath)
- **Bluebell Ride** (7.5 miles, with option to extend to 12 from Eversholt)
- **Brick Ride** (9 miles from Marston Moretaine)
- **Assarts Ride** (9 miles from Old Warden)

Find further information and search these routes and more via our interactive map at [www.greensandcountry.com/explore/horseriding](http://www.greensandcountry.com/explore/horseriding)

## Nature And Wildlife

Greensand Country is the perfect place for a nature hunt and is alive with diverse and wonderful wildlife. Key species include the Adder and Common Lizard on the dry heaths at Stockgrove and Rushmere; Otter and Kingfisher on the Flit river; and Purple Emperor, White Letter Hairstreak and White Admiral butterflies in the woods at Chicksands and Kings Wood. On the heathland and acid grasslands look out for Slow Worms and Common Lizards, Sand Wasps, Digger Wasps and Green Tiger



## Parks And Reserves

Greensand Country contains all of Bedfordshire's remaining heathland, more than half of its woodland and 28 historic parklands. Its parks and nature reserves are perfect for family visits, with many hosting their own sculpture trails. Greensand Country's parks and reserves are ideal for letting the children play outside, walking the dog or settling down with a picnic. A few favourites include:

- **Rushmere Country Park**
- **Woburn Deer Park**
- **Amphill Great Park**
- **Cooper's Hill Nature Reserve**
- **Flitwick Moor**
- **Maulden Woods**
- **Swiss Garden at Shuttleworth**
- **Moggerhanger Park**
- **Riddy Nature Reserve**
- **RSPB The Lodge Nature Reserve & Gardens**

Find further information and search these routes and more via our interactive map at [www.greensandcountry.com/discover/parks-greenspaces](http://www.greensandcountry.com/discover/parks-greenspaces)



Get involved: [greensandcountry.com](http://greensandcountry.com)



# Bucks Fire Service - Kitchen Safety

More than half of all accidental fires in the home start in the kitchen - often because of distractions like phone calls or family. So whatever happens elsewhere in the house, always make sure you have one eye on the hob or oven.

*Buckinghamshire Fire & Rescue Service's top tips for staying safe in the kitchen are:*

- Take care if you need to leave the kitchen while you are cooking. Take pans off the heat or turn them down.
- If a pan catches fire, don't take any risks – get out, stay out and call 999.
- Double check the hob is off when you've finished cooking.
- Don't treat your hob as an extension of your kitchen worktops.
- Keep tea towels and cloths away from the cooker and hob.
- Take care if you're wearing loose clothing – this can easily catch fire.
- Avoid leaving children in the kitchen alone when cooking. Keep matches and saucepan handles out of their reach to keep them safe.
- Take care with electrics – keep leads and appliances away from water, and place grills and toasters away from curtains and kitchen rolls.
- Keep your equipment clean and in good working order. A build-up of fat and grease can ignite a fire.
- Don't cook after drinking alcohol. Have cereal or a sandwich instead!
- Hot oil can catch fire easily - be careful that it doesn't overheat. Never throw water on a chip pan fire.
- In the event of a fire, have an escape plan in place – ideally one you have practised with your family.



- Don't take risks by tackling a fire. Get out, stay out and call 999.

Community Safety Manager Joanne Cook said: "If you don't already have at least one smoke alarm on every level of your home, we urge you to do so – and to make sure you test them every month."

For more fire safety advice, visit [bucksfire.gov.uk](https://www.bucksfire.gov.uk) and follow Buckinghamshire Fire & Rescue Service on [Facebook facebook.com/Bucksfire](https://www.facebook.com/Bucksfire) and [Twitter twitter.com/Bucksfire](https://www.twitter.com/Bucksfire)



**Buckinghamshire  
FIRE & RESCUE SERVICE**  
*we save lives*



**Reporting Issues to**  
*Milton Keynes Council*

Issues that need to be reported to Milton Keynes Council can be done via the link noted below. This covers reporting items such as street lamps, waste and recycling, missed collections, defect on roads/potholes etc.

**[www.milton-keynes.gov.uk/  
pay-report-aply/report-it](https://www.milton-keynes.gov.uk/pay-report-aply/report-it)**

# East West Rail

November 2020 saw a number of significant announcements and publications by the Government that are relevant to the work of the East West Rail Consortium.

The publication of the Government's 10 - Point Plan for a Green Industrial Revolution – launched by the Prime Minister on the 18th November – sets out the actions that the Government will promote in keeping with the commitment to deliver on the legal requirement to achieve net zero carbon no later than 2050.

The Plan includes as one of the 10-Points the need to deliver on investment in walking, cycling and public transport. A week later on the 25th November the Chancellor of the Exchequer presented the outcome of a one-year Spending Review. At the same time the Government published its long-awaited National Infrastructure Strategy.

**The National Infrastructure Summary included within its list of projects a commitment to deliver East West Rail.**

**The Spending Review confirmed funding to enable delivery of the Bicester to Bletchley** section of the Western Section but was silent on the other elements of the Western Section – the link between Milton Keynes and Aylesbury (which in the longer term enables the services to link Northampton – Milton Keynes – Aylesbury – High Wycombe – Old Oak Common) and the Bletchley to Bedford section (the Marston Vale Line).

**The reaffirmation of East West Rail as a project of national significance is to be welcomed**, all the more so given the statement by Government that it will prioritise investment away from London and the South East. The cessation of work on the development of Crossrail 2 is arguably an example of this emphasis having implications for the wider region.

The Consortium has a well-established position in that the **East West Rail project** (including improvements taken forward as the Eastern Section) needs to be **delivered in full if it is to realise its potential to transform east-west connectivity**.

The silence on the two outstanding components of the Western Section may simply be a question of timing. The East West Railway Company continues to work with



local partners through the East West Rail Consortium to develop detailed proposals for both the Western Section and Central Section. However, delays in the delivery of the project – both in terms of individual elements and the overall project – will have consequences for the ability of partners to deliver planned levels of growth in a way that is sustainable.

Whilst it may be viewed that the announcement of funding to deliver Bicester to Bletchley demonstrates continued commitment by the Government to the project, the commitment to give greater priority to investment elsewhere is likely to mean that partners from across the region will need to re-make the case for East West Rail during 2021.

*The East West Railway Company – which has been set up to deliver East West Rail – is best placed to initially respond to queries regarding East West Rail's route, design, construction, future operation, procurement, job opportunities and media enquiries.*

The Company's website is  
<https://eastwestrail.co.uk/>

and their contact form is;  
<https://eastwestrail.co.uk/get-in-touch#general-enquiries>





## Grassroots Football in your Community

Approaching 50 boys and girls football teams represent Woburn & Wavendon Football Club. This includes 'GoalAbility', Milton Keynes' only grassroots pan disability football sessions for boys and girls. They meet every Sunday morning on the MUGA surface at Wavendon Recreation Ground. Like so many aspects of community life, grassroots football has been striving to continue providing all the fun, friendship and football so vital to so many throughout the challenges of COVID-19.

These challenges have ramped up yet again with the most recent virus mutations and alarming spread of illness delivering another inevitable national lockdown. It means that so many youngsters of all abilities (and their families) will again be denied all the benefits of healthy communal exercise, social interaction and development of team values/responsibility. WWFC fully supports all the necessary measures to ensure lives can be protected and we can get to a point where some kind of 'normality' can return.

*As soon as it is safe to restart, we anticipate the grassroots football season will be extended and completed. More importantly, WWFC will again be able to offer all the community engagement across all ages and abilities in a safe, healthy and fun environment. Society will require a massive effort to mend and heal so many lives. Local grassroots football will play a major part.*

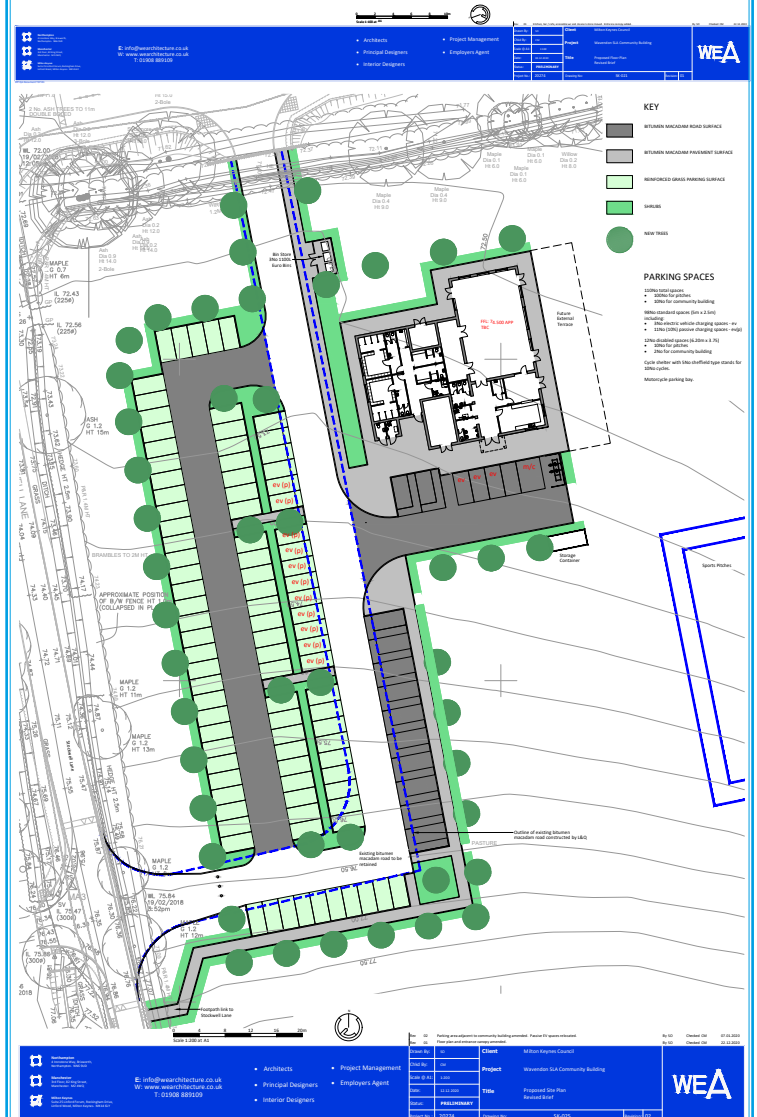
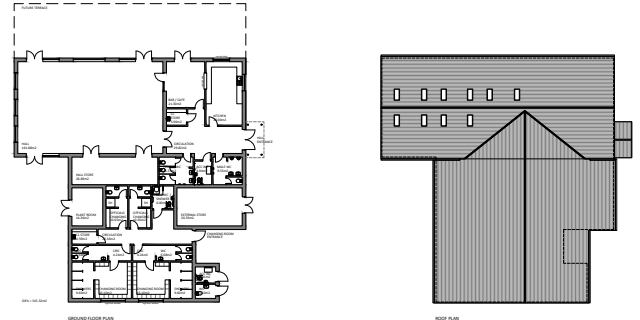
**To find out more, please visit our website:  
[www.ww-fc.co.uk](http://www.ww-fc.co.uk)**

**or email:- [joinus@ww-fc.co.uk](mailto:joinus@ww-fc.co.uk)**



## New Wavendon Hub (Pavilion) Update

The Pavilion Building project is progressing well with a planning application due to be submitted early February. There has been ongoing design development prior to this to ensure the design provides a building which will meet stakeholder aspirations and is affordable within the available budget. Detailed design work will continue during the planning application determination period and assuming approval is granted, construction work is anticipated to start late summer/early autumn with completion of the building in Spring 2022.



## Where do I find out more about Milton Keynes Council's plans for South East Milton Keynes?

The documents are published at  
<https://milton-keynes.cmis.uk.com/milton-keynes/Calendar/tabid/70/ctl/ViewMeetingPublic/mid/397/Meeting/6696/Committee/1354/SelectedTab/Documents/Default.aspx>

Contact point at MK Council is  
**Sabina Kupczyk**  
(Principal Planning Officer - Development Plans)  
**E:** [sabina.kupczyk@milton-keynes.gov.uk](mailto:sabina.kupczyk@milton-keynes.gov.uk)  
**T:** 01908 253132

**W:** <https://www.milton-keynes.gov.uk/planning-and-building/>

Milton Keynes Council | Planning Service | Planning,  
Strategic Transport and Placemaking | Civic | 1 Saxon Gate  
East | Milton Keynes | MK9 3EJ

Get  
Smarter  
MK

Supported  
bus services  
are changing.

From 01/04/2021

Fixed Route bus services change to...  
A Demand Responsive Transport (DRT) Service

Over the next few months we will be sharing information on:

- What routes are ending
- How to access the DRT service
- What to do if you have additional transport needs, such as mobility issues, visual impairments or hidden disabilities

Get  
picked  
up.

Go

> More information at:  
[getsmartertravelmk.org](https://getsmartertravelmk.org)

Milton Keynes Council



**Freephone**  
**0808 278 7991**



Dear Colleague

As of **Monday 26th October 2020**, calls to Citizens Advice in Milton Keynes are now free of charge. To do this, we have had to change the local 01908 604475 number to the one displayed at the top of this page.

We have arranged for an automated message to remain on our old number, and this prompts callers to hang up and redial the new 0808 number.

Our helpline is now open between:



**Mon – Fri**  
09:00am – 5:00pm  
**0808 278 7991**

We also have designated helplines for

- Universal Credit **0800 144 8 444** (Freephone)
- Vulnerable Adults **01908 545191** (calls charged at local rate)

These numbers remain **unchanged**.

Please share this update with colleagues and connections who may want to contact us for advice or who work with people that might need our help

We're also collaborating with other local citizens advice offices to answer each other's calls when lines are at their busiest. This means more calls will be answered overall and people in Milton Keynes will receive support at times when our office would not normally be open.

If you have any questions please get in touch at [director@mkcab.org.uk](mailto:director@mkcab.org.uk)

All Best Wishes

**Ben Thomas**  
Director  
Citizens Advice Milton Keynes

Wafandun Lane, Wavendon,  
Milton Keynes MK17 7AA  
Headteacher Mrs A Dicks  
[admissions@stmaryswavendon.milton-keynes.sch.uk](mailto:admissions@stmaryswavendon.milton-keynes.sch.uk)  
01908 582182



## We are growing!

At St Mary's Wavendon CE Primary we are now rapidly moving over 110+ pupils within our school as the new Eagle Farm development is expanding. From September St Mary's will be offering nursery provision for children aged 3 to 4. If you have a child who was born between 1st September 2017 and 31st August 2018 then please contact us if you are interested in applying for a possible place for September. Induction packs will be ready from the end of January 2021

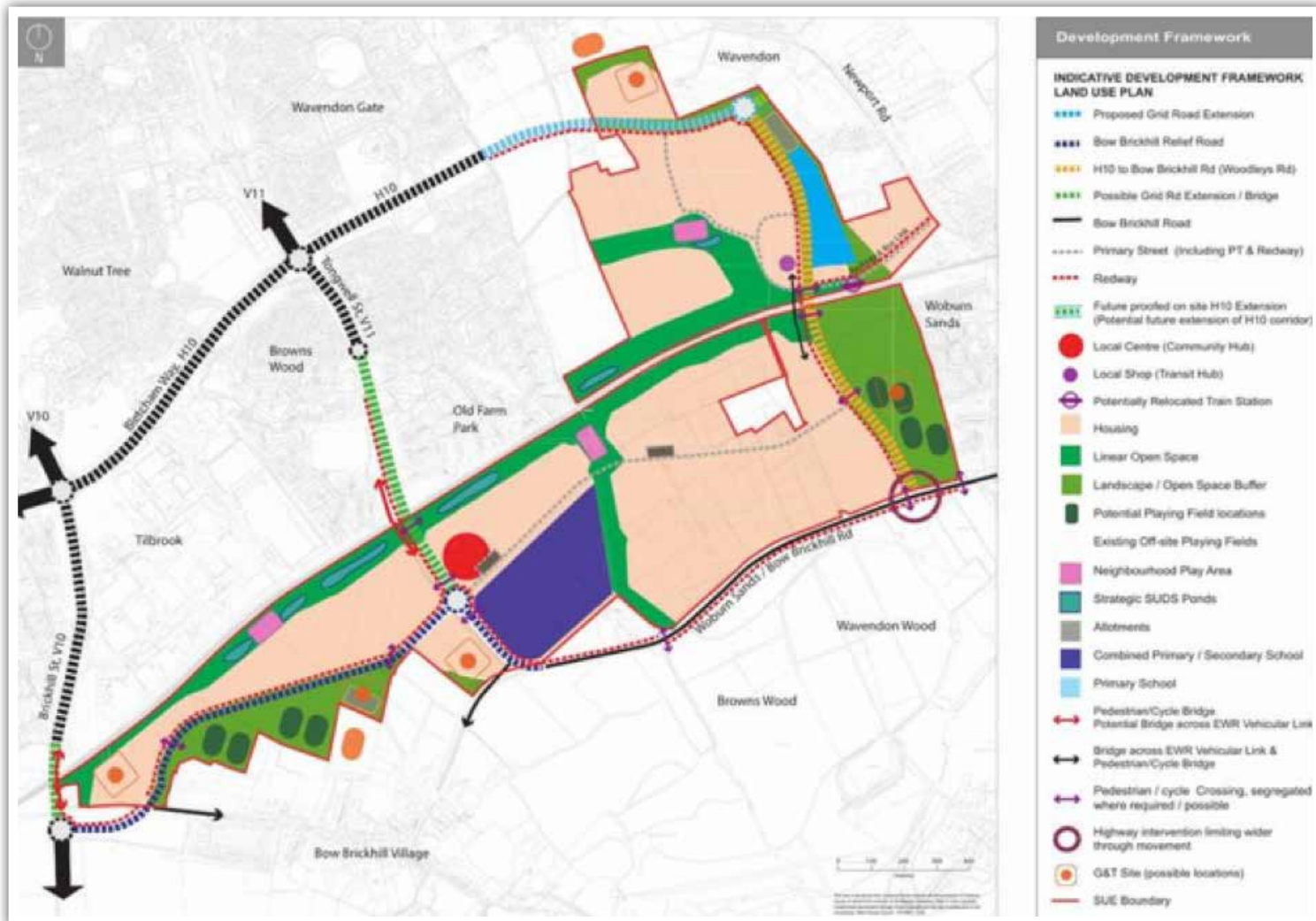
### We are hoping to offer the following options:

15 hours universal provision (Monday to Friday) either am or pm sessions  
30 hour provision (Monday to Friday 8.30am – 2.30pm) and staying over lunchtime (packed lunch provided by parents)  
30 hour provision (Monday to Friday 8.30am – 3.30pm, but buying an extra hour at the end of the day from 2.30pm to 3.30pm)  
It is not expected that our nursery children will access either breakfast club or after school club.

Please note that you are only registering your interest at this stage. Formal applications can be completed from February through to mid March 2021.

**We look forward to hearing from you!**

# South East Milton Keynes



**Milton Keynes Council plan to develop some 3000 new dwellings in the South East Milton Keynes Strategic Urban Expansion area.**

They intend starting a 12-week consultation phase in February (\*subject to a Cabinet decision, Covid restrictions and impacts of considerations on the local elections).

There will be a document circulated by Wavendon Parish Council as soon as possible at the start of the consultation so every resident can comment.

Issues residents may like to consider may include;

- The siting of a proposed (or more than one proposed) gypsy and traveller site
- Impacts on Newport Road of an extension of an 80-metre grid road connection linking onto and beyond Newport Road

- The need for a Woburn Sands by-pass
- Impacts of East West Rail on level crossing barrier closure
- Should Woburn Sands station be moved?
- New playing fields, buffer sites etc – are they sufficient?
- Impacts of the new schools on existing education facilities
- Should we look to create two country parks, one between Newport Road and Cranfield Road (the Wavendon Country Park) and one west of the Groves in Woburn Sands incorporating the fishing lake etc.

More at:

<https://www.milton-keynes.gov.uk/planning-and-building/planning-policy/south-east-milton-keynes-strategic-urban-extension>

## The Stables

I hope you have kept well and safe over the past year and managed to find a brief reprieve last summer when the weather was good and many could see their nearest and dearest.

We would like to thank you for continuing to support The Stables over the past 10-months despite us being closed for much of it. We have however been working to find ways to still bring live music, theatre, film and comedy to customers. In the summer we collaborated with a local food vendor Bandit Street Food to create a Drive and Dine cinema programme and as soon as we were allowed to reopen, we followed government guidelines with socially distanced shows. Many of them sold out (at our reduced capacity) and we are pleased to have received a huge number of compliments from customers and artists on how safe they felt in the venue.

Unfortunately, we are now closed again but we will reopen. We have had some support from the Government's Cultural Recovery Fund which has enabled us to retain our staff and ensure our building is maintained and safe.

The Stables team is working hard to line up future events in anticipation of the vaccine roll-out and a phased return to our full performance schedule at The Stables and special projects including IF: Milton Keynes International Festival and the National Youth Music Camps.

**Thank you for your valuable support to date.** We look forward to welcoming you back to The Stables to enjoy our world class music and entertainment once again.

**Lucy Davies** - Executive Director,  
The Stables Theatre

**If you would like to support us further with a donation, please head to our website:**

[https://stables.org/support-us/donate?dm\\_i=5LCB,564V,A2YJ1,LUE7,1](https://stables.org/support-us/donate?dm_i=5LCB,564V,A2YJ1,LUE7,1)

**Donate Online** or **call** our box office team to upgrade your membership on  
**01908 280800.**



world class  
music & entertainment

the  
stables

box office 01908 280800 [www.stables.org](http://www.stables.org)

## Wavendon Voice

**Are you concerned about the amount and scale of developments in and around Wavendon village?**

NOISE AND DISTURBANCE

LOSS OF GREEN SPACE AND SKYLINE

MORE HIGH DENSITY HOUSING

INCREASED THROUGH TRAFFIC

MAJOR DISTRIBUTOR ROAD

LOSS OF VILLAGE IDENTITY

**Please join us - Wavendon Voice**

We are a group of concerned Wavendon village residents who want to speak out in a clear, strong and united voice to try and influence the relevant public bodies to take a more sensitive approach to our village.

The group intends to liaise and work collaboratively with Wavendon Parish Council, Milton Keynes Council and other public bodies to achieve better outcomes for the village.

We have a simple communication channel for interested villagers to express views, receive information & collaborate; we'll do this via a simple shared email system (you do not require a smartphone or an app!).



**JOIN US**

*If you want to influence how our village survives and thrives through the coming years, whilst maintaining and improving the environment of the old village, please get in touch with the WV team.*

**Send an email to us at:**  
**wavendonvoice@gmail.com**

The team will respond and let you know more about this group and simple facility.

## Marston Vale Line Services

At time of writing, Marston Vale Line services are currently suspended until further notice due to a shortage of train crew. In addition to staff absence due to COVID-19, London Northwestern Railway has also experienced significant disruption to driver training programmes due to it not being possible to maintain social distance in a train cab. This has had a direct impact on the number of available train drivers with the necessary route and traction knowledge.

An all stations and limited stop rail replacement bus service is covering all of the train services.

**The timetable can be downloaded from the Marston Vale CRP website - <https://www.marstonvalecommunityrail.org.uk/2021/01/07/train-services-have-been-suspended>.** Alternatively please contact Stephen Sleight on the number below and he will send a copy to you.

The 07:06 limited stop bus from Bedford on Mondays to Fridays has been temporarily retimed to 07:14. It has been requested this is adjusted back to 07:06 after February half term in response to passenger feedback for a connection to a service from Bletchley to Leighton Buzzard for school pupils.

Please buy train tickets from the Ticket Vending Machines at stations (card only), any staffed rail station or online before travel. The Rail Replacement Bus drivers are unable to issue train tickets.

**Please follow Government guidance for travel - see <https://www.gov.uk/guidance/national-lockdown-stay-at-home#travel> for full details.**

### Symbol Spot Launched!

A new Marston Vale Line Symbol Spot Trail has been launched by MVCRP in conjunction with Mini Map Makers, the first of its kind in the country.

Symbol Spot Packs will be available when purchasing child train tickets at Bedford & Bletchley stations or when visiting Ridgmont Station Heritage Centre with a valid train ticket during normal opening hours. A free booklet with a map and stickers guides families along the Line, with facts, figures and lots for children aged 5 and over to see and look for. The aim is to spot a host of symbols along the line, including letters, numbers, shapes, map symbols, signs and rail safety items.



Adults can learn too! A 'Strip Map' of the Line has been produced depicting it as a semi-geographic line – including questions or lookouts for them to prompt children during the journey.

There are also Symbol Spot Discs for children to find, one located at each station and a whole set at Ridgmont Station Heritage Centre. Rubbings can be taken of each disc in the booklet.

Completed booklets can be taken to Ridgmont Station Heritage Centre. Children who have found all the Symbol Spot Discs receive a special Completion Coin!

All project materials have been sourced from local businesses. Symbol Spot is plastic free and 100% sustainable.

### Ridgmont Station Heritage Centre

The Heritage Centre & Tea Room are currently closed due to the national restrictions. It is hoped to re-open in the Spring. Opening hours are Wednesday to Saturday 10:00 – 4:00. The Tea Room is also open 10:00 – 4:00 on Sundays. Booking recommended - please call 01525 287120.

### Friends of Woburn Sands Station

The Station Friends were shortlisted for a Silver Award in the 'It's Your Station' category in the 2020 Community Rail Awards, a great achievement!

New members for the Friends are welcome. Their work includes maintenance of the floral displays at the station. Please contact Stephen for further information.

The Friends are one of a growing network of groups across the country – please see <https://communityrail.org.uk/community-rail/station-adoption> for details.

### East West Rail

The East West Railway Company has set up a Community Hub. Visit <https://communityhub.eastwestrail.co.uk> to register. It's a great place to share your thoughts and learn more about East West Rail.

## Marston Vale Line 175th Anniversary

The Marston Vale Line celebrates its 175th anniversary in November 2021. Marston Vale CRP is exploring ways to mark the occasion. *All ideas welcome!* Many of the stations were opened at the same time as the Line so there is scope for local events too!

*For further information on any aspect of Marston Vale CRP or the Marston Vale Line please contact Stephen Sleight, MVCRP Officer, on 01234 832645, e-mail [stephens@bedsrcc.org.uk](mailto:stephens@bedsrcc.org.uk).*

Visit our new website  
[www.marstonvalecommunityrail.org.uk](http://www.marstonvalecommunityrail.org.uk)

Find us on Facebook! [www.facebook.com/marstonvalecrp](https://www.facebook.com/marstonvalecrp)

Follow us on Twitter! [@marstonvalecrp](https://twitter.com/marstonvalecrp)

## Strategic Issues affecting Woburn Sands

**Residents will be aware that there are two inter-related issues which will have a significant impact on Woburn Sands:**

- *East West Rail*
- *The South East Urban Expansion of MK (known as SEMK) proposed for the area between Woburn Sands and Bow Brickhill*

At the moment the proposals for an Expressway linking Oxford and Cambridge have been suspended but these may be resurrected at some point.

The long term plan for **East West Rail** envisaged the establishment of a rail service between Oxford and Cambridge. Currently there is an operational service between Bedford and Bletchley and a disused rail track between Bletchley and Oxford. The latter stretch is now being upgraded prior to being brought into service in the mid-2020s; at the same time a connection between Bletchley and Central Milton Keynes is being constructed. The East West Rail Company (EWR), which has responsibility for the stretch between Cambridge and Milton Keynes, has published for consultation a suggested route between Cambridge and Bedford (which currently does not exist) and is reviewing the line between Bedford and Bletchley. As yet there are no firm plans or dates for the Cambridge to Bedford sector.

At the moment two trains per hour use the Woburn Sands crossing; this will rise to four trains per hour once the link to Oxford becomes operational. Two further trains per hour will use the line once the Cambridge section is completed (plus occasional freight traffic). The Town Council has been told that EWR will publish a consultation document covering the future of the Bedford to Bletchley (CMK) sector in the Spring of 2021. The Town Council will be holding a further meeting with EWR in January prior to the finalisation of their consultation document. At this stage we can

only speculate on the future of the crossings at both Woburn Sands and Bow Brickhill.

This uncertainty is affecting the **SEMK development**. PlanMK identified this area for the development of about 3,000 dwellings plus associated infrastructure; PlanMK also included the provision of seven travellers' pitches within the area. Over the last twelve months officers from MKC have initiated discussions with the adjacent parishes (including the Town Council) prior to the publication of a draft Framework Document (which, once adopted, will become Supplementary Planning Guidance which developers will have to abide by). About half of the SEMK development area is within the parish of Woburn Sands. MKC will publish this draft at the end of January and this will be followed by a twelve week consultation period.

**The Town Council**, in our discussions with MKC officers, have argued strongly that the area between the current built-up boundary of the town (ie the Groves and Parklands) should become a Country Park accessible to the residents of both "old" and "new" WS residents. In our view it should include such features as picnic tables, a jogging track, and various wildlife areas; we have also made clear that the fishing lakes should be integrated into the Park and accessible to all residents. We have strongly objected to the proposal that the travellers' site should be located in this site (a number of other possibilities have been put forward by officers). An unresolved matter is the connectivity between Woburn Sands and the SEMK site since this could be significantly affected by the future of the railway crossing.

Residents will appreciate from the above summary that the next few months will need a very strong response from us if we are to preserve the character of the parish. Unfortunately it seems likely that the present coronavirus restrictions will make it difficult to hold public meetings. However the Town Council will publish everything we can on our website, and will also issue additional Newsletters as and when necessary.

# Thames Valley Police

## Police intensify activity to tackle burglary in darker evenings - Milton Keynes

Officers in Milton Keynes are asking local residents to join them in combatting burglaries this winter.

As the nights grow increasingly darker, there is a national trend of an increase in burglaries.

Burglars take advantage of more obscure places to hide un-noticed and spotting which houses are unoccupied, making them easier targets.

As a result, officers in Milton Keynes are intensifying activity to combat burglaries. They are using crime data to identify areas that are often targeted by burglars and increasing patrols in these areas to deter and disrupt those looking to commit crime.

We will be using intelligence gathered from officers and the community to identify trends and patterns and use covert patrols to catch burglars in the act. In support of this operational activity, they will also be sharing advice and raising awareness with members of the public on how to protect your home from burglars.

Detective Inspector James Horseman, of the Priority Crime Team in Milton Keynes, said: *"Being burgled can be an emotional and traumatic experience for victims and I want to make sure that we do all we can to prevent residents of Milton Keynes from having to go through this."*

Burglary detectives will be working with officers from teams across Milton Keynes to pursue and disrupt burglars and I want to share advice with local residents so that they can take some simple and practical steps to reduce the risk of falling victim to a burglary and ultimately, join us in giving burglars a hard time.

Most burglars are opportunists, so will take advantage of any moment we are seen to be letting our guard down when it comes to home security. **The key things to remember are:**

- *Be sure to leave a light on if you leave your home*

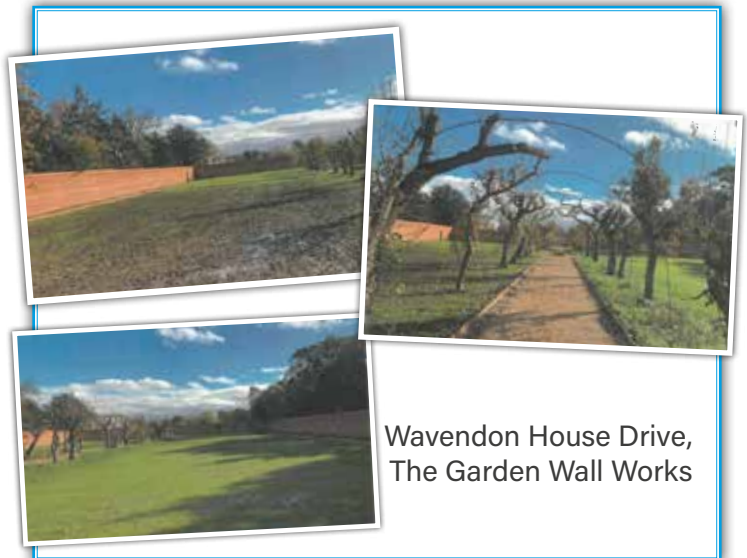


*unattended. A timer switch can help in giving the illusion that someone is home even if it is not the case. "Make sure you lock your doors and windows, even when you are inside your house. Getting into this habit means that there is never a time when you go to bed leaving the door unlocked.*

*- Make sure garden tools and ladders are stored away in a shed, garage or locked storage container when they aren't in use. Burglars often use the victim's own items to break into homes so make sure this opportunity is taken away from them.*

**These are the key points to remember but you can find more advice in our free online Home Security Guide.**

You know your neighbourhood better than anyone and you will know when something seems out of place. Please tell us about these suspicions. Your information could be the piece of the puzzle that we need to identify a burglar and stop them from committing further crimes. You can contact us using the online form on our website or by calling 101. **If you believe a crime is in progress then always call 999.**



# Welcome!

We warmly invite you to join us **online** while the church building remains **closed** on account of current circumstances. We offer a range of support, **open to everyone**, with most of it **available at any time**. With support in prayer, weekly services, groups for all ages and our ever-popular monthly quiz, we're here to help you through to Easter. **Revd Matt Trendall** is glad to answer your enquiries at **01908 582839**

## Watch at any time

**crafty church for kids** New activities recorded fortnightly

**daily inspiration** A nugget of hope to uplift you every day

**worship** We record a weekly 30-minute service for you to watch.....

log on at 9.30am Sunday for a collective experience - or at any time!

**Links available at any time through our website:**

**<https://www.stmaryswavendon.co.uk>**

## Join a group by live link (Zoom call)

**weekly: adult bible study - youth (15+) - children's (5-8, 9-14)**

**monthly: quiz night** 7.30pm on 3rd Tuesday of every month

Fun for all ages. Join a team (6) on the night or make up your own

**For more info on all these activities, email Revd Matt:**

**[matt.trendall.mk@gmail.com](mailto:matt.trendall.mk@gmail.com)**

**See our Facebook page: St Mary's Church Wavendon Village**

**Prayerchain** For confidential support in-prayer, whether urgent or ongoing, you can reach this dedicated group by emailing us at any time: **[prayerchain.wavendon@gmail.com](mailto:prayerchain.wavendon@gmail.com)**

Would you be interested in getting together for a virtual coffee morning? We'd like to offer you the chance to stay in contact with others, especially if you're new to the area or are otherwise finding it hard to get to know people/stay in touch....

**Please email Alise [alisetrendall@gmail.com](mailto:alisetrendall@gmail.com) if you're interested**



# ALL THE RIGHT CONNECTIONS

Wavendon Connect brings together all the groups, facilities and individuals who are here to help make for a happy, healthy and energised local community.

Whether you're new to the area or a longstanding member of our growing community, Wavendon Connect is YOUR link to all our superb local facilities, services and democracy.

*Get involved in YOUR local community.*

*Email:-*

***WavendonConnect@  
wavendonparishcouncil.co.uk***

MEETING ROOMS

HALLS

CLUBS &  
VOLUNTARY  
ORGANISATIONS

ALLOTMENTS

SPORTS CLUBS &  
FACILITIES

SOCIAL CLUBS

LOCAL ISSUES &  
GOVERNMENT



*Building a healthy &  
cohesive community*