

Wafas AND Wallas

YOUR LOCAL PARISH MAGAZINE

www.wavendonparishcouncil.co.uk

Autumn 2018

Inside this edition

We hope you like the design and format of this improved Wafas & Wallas – not before time I expect some are saying! We shall be keeping you up to date on any progress regarding the Expressway proposals, on development proposals connected with MK expansion and the recent controversial detailed application by Abbey Homes on land adjacent to the Stables theatre which has attracted over 3000 letters of objection – a record at MK Council!





Editor: *David Hopkins*

80 Walton Road | Wavendon | Milton Keynes | MK17 8LW

Thank you for the many good wishes and congratulations local residents passed on to me following my year as Mayor of Milton Keynes. Following the election in May its business as usual and time to face the considerable challenges that will face our local area in the months and years to come.

For any local issues contact me at;

David.hopkins@milton-keynes.gov.uk

Wavendon on the Web:

www.wavendonparishcouncil.co.uk



Wafas AND
Wallas

*Printed & Published by
Wavendon Parish Council
on behalf of the people
of the ancient Parish of
Wavendon
(including parts of
Hog Sty End)*

Copy date

for December

(the Winter 2018/19) edition:
Sunday 18 November 2018

Wavendon Parish Council

For any issues that you would like to raise with Wavendon Parish Council please contact, in the first instance, Parish Clerk - **Alan Kemp**

Wavendon Parish Council Clerk
alanj.kemp@btinternet.com

Address

57 West End, Long Whatton,
Loughborough, Leicestershire, LE12 5DW.

Phone Contact

HOME 01509 844241

MOBILE 07783 939020

Village Contacts

Wavendon Parish Council



Cllr David Hopkins *(Chairman)*

Cllr Susan Moroz

Cllr Arthur Braddish

Cllr David Ostler

Cllr Robert Hill *(Vice Chairman)*

Cllr Ron Jamieson



**Looking to hire
the Wavendon Community
Centre?**

Contact Susan Hopkins

Hall Manager:

T: 01908 582632

MK Expressway

We can now confirm that the project webpage is live and presentations from the recent conference can be found in the project media files and document section.



The webpage address is:

<https://highwaysengland.co.uk/projects/oxford-to-cambridge-expressway/>

Going forward the webpage will be the main area to access public information about developments on the Oxford to Cambridge expressway and we will be updating it periodically as the project moves forward.

The questions and answers from the recent conference will shortly be placed on the website.

If Highways England can be of further assistance then please do not hesitate to contact a member of the Oxford to Cambridge Expressway team.

Oxford To Cambridge Expressway Team -
National Infrastructure Programme
[Highways England](#) | [Woodlands](#) | [Manton Lane](#) | [Bedford](#) | [MK41 7LW](#)
Web: <http://www.highways.gov.uk>

Plan MK

Cllr David Hopkins attended four days of the hearing into the public examination of the Plan:MK in July and was at the top table providing evidence for three of those days on behalf of the local community.

The Planning Inspector; David Spencer BA(Hons) DiPTP MRTPI is appointed to undertake an independent examination into the soundness of Plan:MK

The Inspector's task is to consider the soundness of the submitted Plan, based on the criteria set out in paragraph 182 of the National Planning Policy Framework.

We expect to receive some indication of the Inspectors findings later in the year and that Plan:MK might be adopted by the summer of 2019.

Plan:MK



Friends of Woburn Sands Station

The group is now officially formed with the aim of enhancing our station at Woburn Sands. If you have any ideas or would be willing to help with plants and planting please contact the Chairman, **Robert Allan** on roballan1301@gmail.com

Snippets for September

Woburn Sands / Wavendon Weight Restriction

The posts for the terminal signing have been installed. The Advanced direction signing for the restriction will be carried out in August/September along with the relining of Kingston roundabout. (see extent of weight limits below). New 30 MPH limit on part of the Newport Road.

Lower End Road / Newport Road Traffic Signals S278 Works

The works are still ongoing. Hopefully, the temporary traffic lights have been removed.

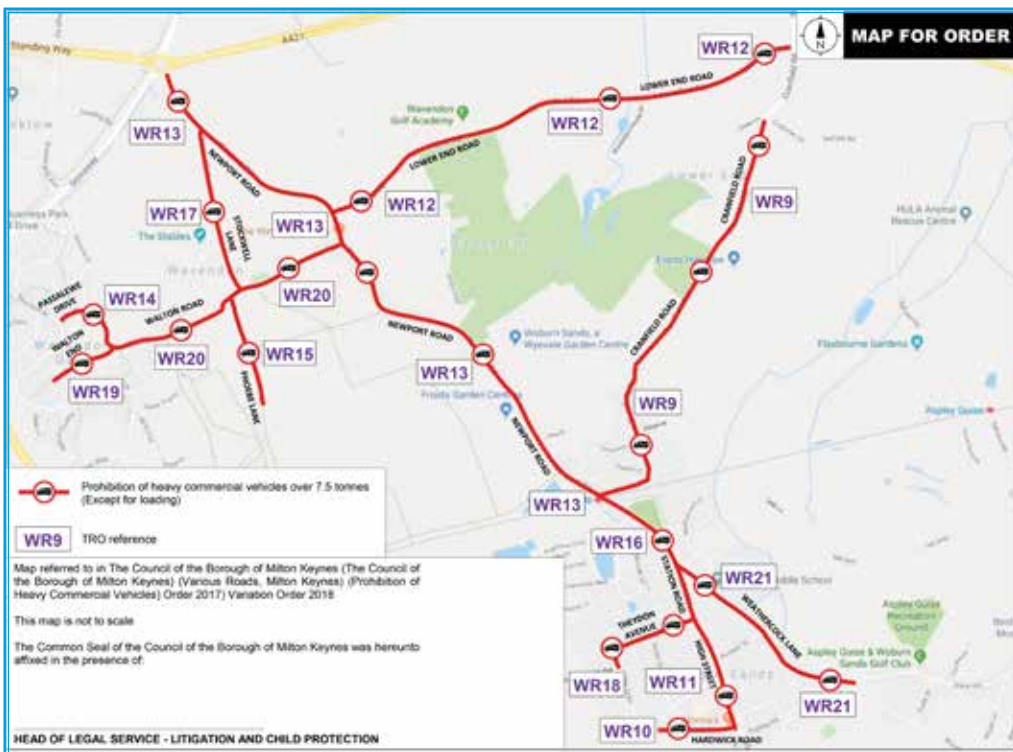
For more information contact:

Phil Jeffs, EngTech MICE - Clerk of Works/Assistant Engineer

T: 01908 254055 - **E:** philip.jeffs@milton-keynes.gov.uk

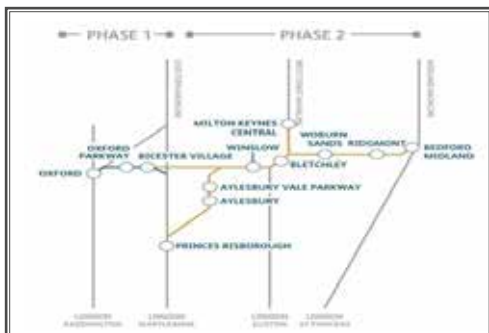
T: 01908 254984 / **M:** 07946 747825

Woburn Sands / Wavendon Weight Restriction



East West Rail

East West Railway Progress Report- From Charles Hurst (Network Rail)



I assume the scope of the scheme is well known but just to recap the work affecting your area: we are planning to undertake platform extensions at Woburn Sands and Ridgmont and to include a new service from Oxford to Bedford which will stop at both of these stations. Line speeds will stay as is.

We have now moved into the application process so I provide an update on this aspect of the project.

The application documents are progressing well and we are working towards sign off of the complete submission document around a month before the submission date to allow enough time for printing. Network Rail placed its authority to submit which we need from Network Rail with a submission date of 27th July 2018. Once submitted the objection period starts immediately and the standard objection period runs for 6 weeks although we may be asked to extend this by 2 weeks as it will occur during school holidays.

Copies of all the submission documents are now available. Copies (either paper copies or USB sticks) have been provided to all statutory consultees including local authorities and parish councils. Anyone can request a copy of a complete set of the documents or individual documents although we are entitled to charge for additional copies. In reality if a few people

ask for individual copies we will probably forego the charge but if the requests become too numerous we may have to consider making a charge. Within 28 days of the end of the objection period the DfT (TWA unit) will notify us whether they intend to hold a Public Enquiry which we consider is very likely. A public enquiry will run from around the end of February for about 6 weeks after which the Planning Inspectorate and the Secretary of State decide whether to make the Order requested.

Enabling works (or Early Works) will be limited to habitat creation on environmental mitigation sites, maintenance of existing structures, removal of unused track and vegetation clearance in line with rules on nesting birds. We do plan to set up 3 separate compounds over the next 12 months. These are at Bicester, Winslow and Newton Longville. The Winslow site will utilise the new station site and will be used during the summer of this year under Permitted Development rights. Planning approval will be required for the other two sites and these will be utilized in late 2018/early 2019. The site at Newton Longville will include a temporary office block for site based personnel. We plan to also rent an office in Milton Keynes, near to the shopping centre and John Lewis. This will be used as an overspill for our current office in Birmingham and may only be for a few years or until site work proper starts.

The main works will only be commenced once Order powers have been granted.

Contact: Charles Hurst - Stakeholder Manager EWR for more details
[East West Rail - Network Rail | Victoria Square | Birmingham | B1 1BD](#)

Email charles.hurst@networkrail.co.uk
Tel: 07515 620485

West Midlands Rail Franchise Competition

Bedford to Bletchley



The contract was awarded, from December 2017 to March 2026, to West Midlands Trains Ltd (a joint venture between lead partner, Abellio, East Japan Railway Company and Mitsui & Co Ltd) on 10th August - see.

<https://www.gov.uk/government/news/more-seats-for-rail-passengers-as-nearly-1-billion-is-invested-in-midlands-services>

There is a network map which details the various enhancements line by line across the West Midlands franchise - <http://maps.dft.gov.uk/west-midlands/>

The principal benefits for the Marston Vale Line are as follows:

More space for passengers and at-seat charging facilities

Earlier first service and later last service between Bletchley and Bedford by December 2018 Monday to Saturday
New hourly Sunday service from May 2021 delivering 14 services in each direction

Increased Community Rail Partnership funding

A service quality regime to improve the quality of stations, trains and customer service for passengers

And newly refurbished trains from December 2018

There will also be a Bank Holiday service from December 2018 as part of a wider franchise commitment.



OVER 60's MONTHLY OUTINGS

19 September
Guildford

To book contact:
l.stapleton@wstc.org.uk



WOBURN SANDS
COMMUNITY MARKET DATES
(now) SATURDAYS

13 OCTOBER
8 DECEMBER

From Cllr David Hopkins Chairman Wavendon Parish Council

Plans & Poems for Ending of WW1 Remembrance Day and Peace Events

Wavendon villagers are being asked to share ideas of how to mark 100 years since the end of World War One.

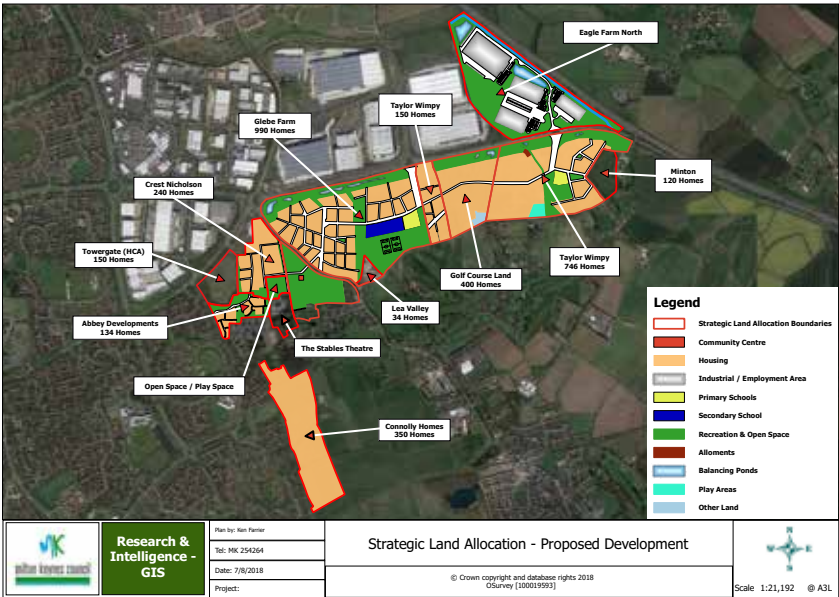
At its recent meeting with representatives of the Parish Church (St Mary's, Wavendon) those present discussed centenary suggestions such as planting poppies around the village, encouraging school children from the village to make and display artificial poppies, planning a commemorative copse on parish owned land (one tree for each of the fallen) and possibly preparing and publishing a booklet about how Wavendon was impacted by the so called 'Great War'.

Residents are already aware that a number of the new streets in the development areas in Wavendon will be named after those who lost their lives in the conflict and whose



names are included on the War Memorial in the Churchyard.
Wavendon has also acquired a sponsored There but Not There life-size commemorative figure from the charity 'Remembered' which will play a pivotal part in the remembrance events in the autumn.

Cllr David Hopkins has also written to Cadbury in Bournville requesting that they consider producing commemorative version of Jelly Babies branded as the original Peace Babies - which were originally designed in 1918 (when they were produced by Bassett's in Sheffield as "Peace Babies" to mark the end of World War I). Cadbury now owns the product following company takeovers etc.



Reporting issues to *Milton Keynes Council*

Issues that need to be reported to Milton Keynes Council can be done via the link noted below. This covers reporting items such as street lamps, waste and recycling, missed collections, defect on roads/potholes etc.

<https://www.milton-keynes.gov.uk/pay-report-apply/report-it>



Interested in becoming a Parish Councillor in Wavendon?

Parish Councillors are elected representatives who volunteer their time freely to work on behalf of local residents. Individuals may also be co-opted at the discretion of the council if there is a vacancy. By becoming a parish councillor you can become a voice for our community, somebody who residents will look to for help, guidance and support. You will be involved in local decision making and strategic planning for the benefit of the people you serve. Seeing your community change for the better, as a result of decisions you have helped make, is something that can give you a sense of achievement and pride.

Eligibility for Parish Councillor (one of the following):

- (a) is registered as a local government elector for the parish; or
- (b) has during the whole of the preceding twelve months occupied as owner or tenant, any land or premises in the parish; or
- (c) his/her principal or only place of work during the preceding twelve months has been in the parish; or
- (d) had during the whole of the preceding twelve months resided in the parish or within 4.8 km thereof.

Interested?.. then contact:

Alan Kemp the Parish Clerk by post at
57 West End, Long Whatton, Loughborough, Leicestershire, LE12 5DW

or via the telephone on **01509 844241**
The Parish Council can also be contacted by email at
alanj.kemp@btinternet.com



Collecting Cardboard Waste

from Tony Brown (Waste Services Officer at MK Council)

This is to remind residents that we do not collect loose waste including cardboard due to the issues it causes with the collection vehicles and the recycling plant. Wet cardboard in particular cannot be recycled which is why we ask that all recyclable waste is placed into the sacks or large amounts/oversized cardboard boxes are taken to one of the Council's CA sites "tips" for disposal.

Unfortunately the council cannot make any dispensations to the policy on cardboard box collections as the council needs to comply with the Councils section 46 notice which specifies no loose materials, this notice forms the basis of most of the councils enforcement powers/actions so if it were to give dispensations it could potentially render it powerless against residents that fly tip. Currently the council has a contamination rate of 20-25% at the materials recovery plant here in Wolverton of which 5-8% of

that is wet cardboard. MKC is contractually bound to ensure its material contains no more than 10% of contamination so there is a possibility that the council could face large costs to recompense its contractor for the breach.

Tony Brown Waste Services Officer

Milton Keynes Council,

Milton Keynes Waste Recovery Park,
9 Dickens Road, Old Wolverton, Milton
Keynes, MK12 5QF

email: tony.brown@milton-keynes.gov.uk



Improving Lives: MKC lines up a further £500k to help disabled and elderly people

Milton Keynes Council is investing an extra £500,000 in improvements to the homes of older and disabled local people, to help keep them safe and enjoy more independence.

The council gave the go-ahead in August for the extra spending, which should benefit more than 500 households.

This will bring the total amount to be spent on disabled adaptations this financial year to just over £1.6m.

Last year the council completed 424 home adaptations, including:

- 151 'wet rooms' installed in people's houses
- 60 stair lifts
- 42 general bathroom adaptations
- 32 ramps installed to make wheelchair/disabled scooter access easier

More than 200 disabled adaptations have already been approved for 2018/2019, many already well underway or finished, with another 30-50 new requests each month, which should bring the overall figure up to about 500.

The majority of people will, at some point, experience some difficulties carrying out day-to-day activities. More than a quarter of men aged over 65 and nearly a third of women struggle with at least one of the 'Activities of Daily Living', such as washing, dressing and eating according to the Centre for Ageing in their publication Homes that help.(July 2018)

See: <https://www.ageing-better.org.uk/sites/default/files/2018-07/Homes-that-help-research.pdf>

MK Council reduces number of people in temporary accommodation by more than a quarter



Milton Keynes Council's housing team has reduced the number of families living in temporary accommodation by more than 25 % over the last year.

In June 2017 there were more than 800 families living in temporary accommodation, including B&B, much of it out of the area.

But recently that figure had been reduced to 566, through various innovative measures, including building new council houses, working with local landlords to secure long term private leases, and 'brokering' deals whereby smaller families living in larger properties were able - and happy - to downsize.

In June 2017 there were:

800+ families in temporary accommodation

14 families were occupying hotel rooms, and the highest/worst figure was 179 families occupying hotel rooms

78% of those in temporary accommodation were outside of area

Only 26 families had an offer of permanent housing

Since that time:

MKC has reduced the number of families in temporary accommodation from our highest at 805 to currently 566

The council has one family in a hotel - and it has reduced the need for B&B accommodation unless there is exceptional need

98% of those in temporary accommodation are now within Milton Keynes

41 families have an offer of permanent housing

To achieve the reduction in temporary accommodation and reduce the need to use B&B the council has:

Secured private sector leases for 3 years enabling accommodation locally

Communicated with all registered providers to develop and increase supply available

Increased the provision of our secured let scheme from 40 properties to 99

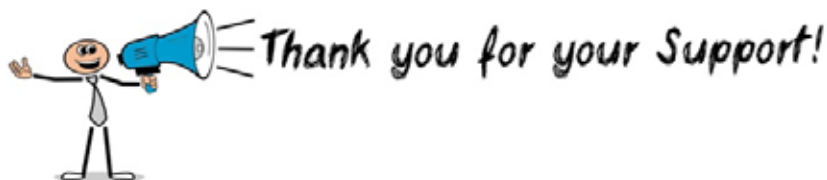
Increased housing supply on a nightly let basis by securing accommodation locally

Increased housing supply available from building new properties

Negotiated with families living in larger accommodation that is no longer required to downsize into smaller accommodation releasing family accommodation.

The council recently agreed to push for a further £8m funding which would supply 40 or so new homes.





The Stables Needs Your Support

There is more time to submit your objection

As a result of the tremendous response we have received to date to our request for support in opposing the planned detailed housing development, we have been informed that the matter will now be taken to a full Planning Committee meeting at MK Council. The date of this meeting is still to be confirmed – likely to be October or November - but it does mean there is **MORE** time to log your objection to the proposed scheme. Please do not delay in submitting this so that your objection can be 'officially' logged. As and when we have news of the meeting date and time we will update our website and social media channels.

You can put comments in writing (see suggested templates on the Stables web site) <https://stables.org/> to the Council at the following address:

Jeremy Lee, Senior Planning Officer, Milton Keynes Council,
Civic Offices, 1 Saxon Gate East, Milton Keynes, MK9 3EJ

Please note you **MUST** quote **Planning Reference: 18/01304/REM**

Alternatively, you can submit your comments via www.milton-keynes.gov.uk/publicaccess
Use the above reference number in the Search bar.

Please include your name and postal address in any emails or letters as anonymous comments cannot be taken into account. Any comments received will be published on the Council's website.

Thank you again for your amazing support!



Changes to the Recycling Sacks on 2018/19

Background

Priority 9 of the MK Council Waste Strategy 2017-2022 sets out several improvements to be implemented to the waste service in relation to recycling sacks namely: changes to the supply of extra sacks and the use of sacks at flats which have Eurobins.

The Waste Strategy Financial Implications June 2017 proposed to remove the provision of recycling sacks via outlets. Instead residents will be able to order recycling sacks via the 'Request It' part of the Milton Keynes website following the same process as ordering a replacement blue box.

There is a need to make changes to the supply of recycling sacks in 2018/19 for several reasons:

Improve the quality of materials delivered to the Material Recycling Facility ("MRF")

The level of contamination in materials delivered to the MRF is reported to be around 20%. This has a detrimental impact on the financial viability of the MRF and the income generating potential. There is a significant cost to dispose of contaminated and rejected material and additional processing costs. This is compounded by recent developments in China, where quality controls have been tightened on imports of paper and plastics leading to a glut of the lower grades of these materials on the world. In part since the decision to cease deliveries of black refuse sacks, some residents use recycling sacks for residual waste. Having clear sacks will allow the collection operatives and Viridor to spot poor quality materials and take steps to mitigate the risk of waste inputs to the MRF.



Clear sacks are used by many local authorities ("LAs") e.g. South Hams, Wandsworth, Medway, Braintree, Hillingdon, Colchester, Chelmsford for quality reasons.

Volumes of sacks distributed and the abuse of the free outlets.

A very large number of recycling sacks are supplied by the Council to residents each year.

Based on the current delivery and top up process the number of sacks supplied in 2018/19 would be over 13 million, or 2.24 per property per week. As stated above a large volume of poor quality materials end up at the MRF but also the collection crews spot the contaminated sacks and deliver them to the MKWRP at considerable cost. Many recycling sacks do not reach the MRF or MKWRP and they have been known to be acquired for many other non-waste related purposes and by businesses inside and outside of the borough largely due to the lack of adequate control at the outlets.

Medium Term Budget Reduction by implementing changes to the supply of extra sacks and the use of sacks at flats which have Eurobins The service has proposed a budget saving for 2018/19 by making changes to the way it distributes recycling

sacks. Changing from a semi-transparent pink recycling sack to a clear sack is expected to bring about a small saving in production costs in addition to the saving by stopping stop supplies of recycling sacks to the approx. 8,000 flats that have Eurobins as these residents already have a suitable containment method for mixed dry recycling in the form of a 1,100 litre bin.



Annual Supply

Throughout April, May and June, the annual delivery of 60 clear recycling sacks was made to each property which does not receive a Eurobin collection. Any clear refuse type sack (or pink sacks that residents still have) will be permissible for recycling and residents will be encouraged to make maximum use of the space in their sack e.g. washing and squashing and breaking down larger cardboard to fit in the sack.

Online Ordering and Direct Delivery of Top-up Sacks

To improve access to all residents, including those who are unable to get to the outlets, MKC are implementing a customer driven delivery system for top-up recycling sacks.

The main method of requesting sacks will be online. Telephone ordering, including will also be possible for those without online access. Access can be provided to residents wishing to order sacks online at Civic offices.

To find out about changes to recycling sacks and commence the ordering process, residents should log on to

www.milton-keynes.gov.uk/sack-deliveries

This will be the same process as ordering a green bin or blue box.



Become a GREENSAND COUNTRY CHARTER MEMBER

Are you a business based in Greensand Country, the distinctive, beautiful and loved countryside from Leighton Buzzard to Woburn Sands to Gamlingay? The Greensand Country Landscape Partnership needs your help to put this special place on the map as a recognised visitor destination.

Displaying the logo is just one of the many ways that you can show that you are 'Proud to be a part of Greensand Country'; helping to promote our shared landscape for the benefit of everyone; communities, businesses, organisations and visitors.

Find out more and sign the Charter at
www.greensandcountry.com/caring-for-greensand-country/charter

Fun, Friendship & Football

If you're interested in participating in local grassroots football, then one of the areas' largest and oldest clubs is right on your doorstep. Described by the Football Association as "without doubt, a shining example for grassroots football clubs everywhere", Woburn & Wavendon Football Club runs teams and sessions from Under 5 through to adult, boys, girls and mixed for all levels of ability.

FUN, FRIENDSHIP & FOOTBALL are the core Club values, wonderfully illustrated by four WWFC initiatives:-

1. **WILDCATS**

WWFC is an FA Sanctioned Wildcats Girls's Football Centre. Since April, more than sixty 4-11 year old girls have been introduced to grassroots football through our regular Sunday morning sessions. Many have now progressed into established WWFC teams, whilst others have formed brand new teams for the 2018/19 season. If you'd like to find out more about girls' and ladies' football, email:- lionesses@ww-fc.co.uk

2. **GOALABILITY**

Pan-disability sessions held every Sunday morning, Goalability truly personifies FUN, FRIENDSHIP & FOOTBALL.

FA qualified WWFC coaches with full safeguarding and DBS certification guide and control activities, placing the care and protection of children first. The aim is to offer youngsters a path to fun-filled progression and development where individual goals can be achieved and celebrated. To find out more, email:- goalability@ww-fc.co.uk

3. **UNDER 6**

Aimed at school year 1 children, these mixed sessions for boys and girls are held every Sunday, and offer the ideal gateway for youngsters and parents to sample all the fun and excitement of team and individual play. Find out more:- U6@ww-fc.co.uk

4. **RECEPTION/FOUNDATION**

These Sunday morning sessions are all about introducing boys and girls to the basic elements of football, but with the emphasis on fun and safety. To find out more, email:- foundation@ww-fc.co.uk

Don't forget, we have boys' and girls' teams from Under 7 up to adult, benefitting from **REGULAR PRO-COACHING & SPECIALIST GOALKEEPER COACHING**, **WEEKLY TRAINING PROVISION** (including winter floodlit), **SOME OF THE AREAS BEST PLAYING LOCATIONS**, as well as **TEAM PLAYING KIT AND TRAINING KIT PROVIDED**.

So if you'd like to get involved playing, coaching or volunteering, please get in touch.



**Woburn &
Wavendon F.C.**
LIONS & LIONESSES





WELCOME
TO OUR
'OPEN DOOR'
**COFFEE
MORNINGS**
Every Thursday
during term
8.45 - 12 noon
'Fabulous cakes!'

QUIZ NIGHT

Tues 18th September

7.30 - 9.00

St Mary's Wavendon

Just turn up!

£1 per person / Teams of up to 6
Bring your own drinks and nibbles
Winning team takes 1/2 of entrance monies

Friendship Club for Seniors

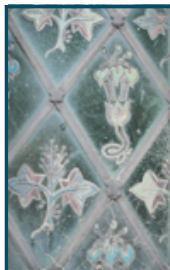
Wavendon Village Hall
(opposite St Mary's Church)
on

Alternate Tuesdays 2-4pm

Come & Join Us

Scrabble, Cards, Dominoes, Chat, Cake & a Cuppa
Contact Monica 01908 582844
or Alise & Matt 01908 582839

Next meeting 25th September 2018



Prayer at St Mary's

Monday:

'Revive'

Informal prayer

9.15 - 10.00

Thursday:

Midday Prayers

12.30-12.50

Sunday:

Ask for prayers after service

**rock
solid**



Where? We meet at Christ the King,
Kent's Hill

Who? For ages 9-14

When? Fortnightly on Thursdays 7.00pm-
8.30pm, alternating with Youth Club

Why? To learn about Jesus through
games, activities and chat

Where? We meet at Christ the King,
Kent's Hill

Who? For ages 9-14

When? Fortnightly on Thursdays 7.00pm-
8.30pm, alternating with Rock Solid

Why? To make friends and chill!

Dates for Autumn 2018

6th Sept, 20th Sept, 4th Oct, 18th Oct
(half term break), 15th Nov, 29th Nov

Dates for Autumn 2018

13th Sept, 27th Sept, 11th Oct, 25th Oct,
8th Nov, 22nd Nov, 6th Dec, 14th Dec

St Mary's Church Wavendon



*All are
welcome
in this place*

St Mary's Church

Please join us for a

Harvest Thanksgiving Service



9.30



*Sunday
14th October*

Donating to
MK Foodbank

*We can provide a list of
items currently needed*

*For information on the
Wavendon
Community
Harvest
Celebration
and
other special events
this autumn
including courses in
discipleship
please visit
stmaryswavendon.co.uk
or pick up a leaflet
in church*

*Weekly Worship
9.30*

Every Sunday

~

*2nd Sunday
of each month*

Cafe Church

9.15 for 9.30



*Coffee & pastries,
chat & a challenge
All welcome!*

Armistice 100



Remembrance Day 2018 ~ Sunday 11th November

**Armistice Day
11.11.18**

~

*St Mary's
Church*

**Remembrance
Service**

10 am

~

**Wavendon
War Memorial
for 11am**

Wreaths to be laid