



Wavendon Parish Council

Update from your Unitary Councillor – June 2025



New Headteacher for St Marys CoE Primary in Wavendon

As Chairman of Governors at St Marys CoE Primary, I am really excited to inform you that Hayley Cook has been formally appointed as our new permanent Head of School at St Marys from the start of the new academic year in September 2025.

As you may be aware, Hayley Cook has been currently supporting the school as interim Head of School and this will continue until the permanent role commences in September 2025. Hayley is really enjoying her time at St Mary's Wavendon and has already been making a real positive difference to the lives of children, families and staff. Hayley Cook has been working as the Head of Primary at Glebe Farm (another school within our IFtL family) prior to being at St Marys and it is a great opportunity to continue to build the links between our two schools. Mrs Kemp will continue as Executive Headteacher.

The previous Headteacher, Mrs Amanda Dicks has made the significant decision to retire at the end of this academic year. Mrs Dicks has served the school with unwavering dedication for many years, through its growth from a village school within the centre of Wavendon to its development into a large school centred in the heart of a growing community.

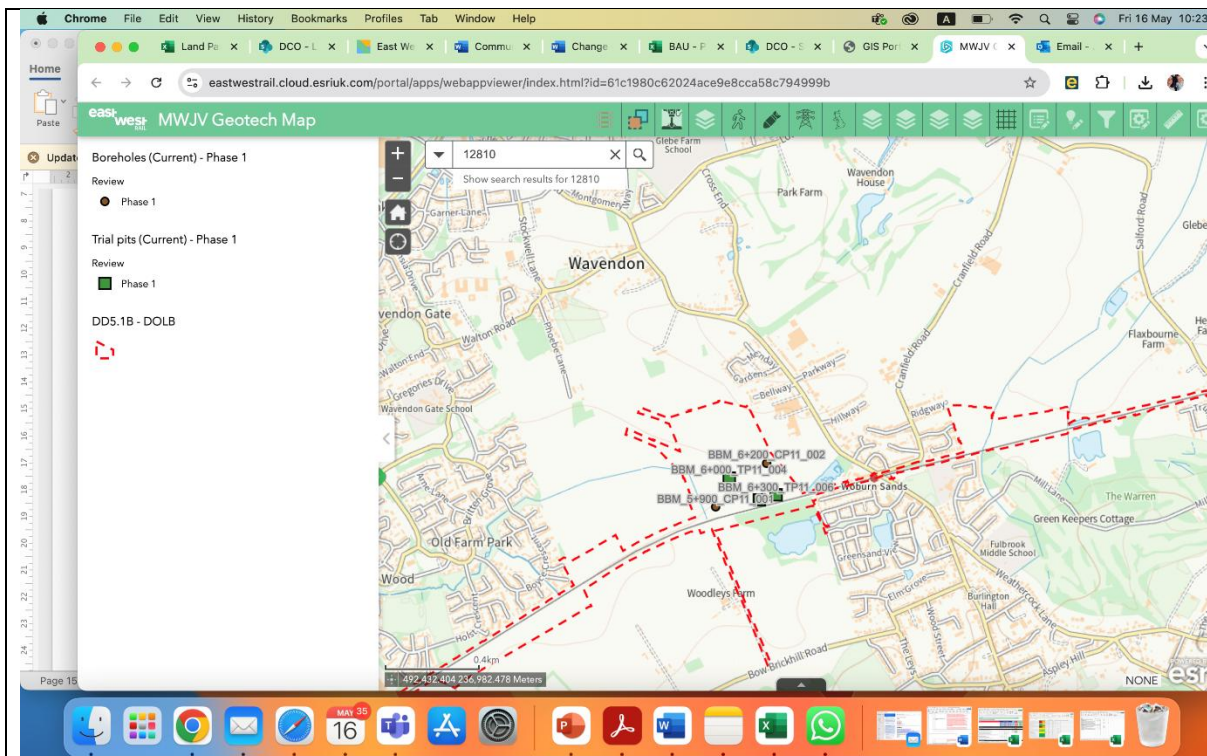
We are grateful for the leadership and commitment she has shown to all and wish her all the very best for her future.

I know you will join us in warmly welcoming Miss Cook to St Mary's and enjoy all the benefits this will bring the school, families and community.

The Loop

Good news – we have heard from the Arriva Network Manager (Matt King)who reports that the Loop bus service has seen its highest ridership level since the route commenced last January. This is really encouraging for Arriva (and for residents).

View Loop timetable <https://arriva.widen.net/s/lqhpzw7x2f/loop-timetable>



EWR

Below is correspondence from EWR relating to ground investigation works in the Woburn Sands area, that are about to commence, subject to discussions with landowners. Boreholes and trial pits are being undertaken across 5 sites to determine ground conditions, water table and geology.

I've just been informed that ground investigations are due to start on a land parcel in Woburn Sands next week, land parcel attached.

My understanding is that there are two boreholes and three trial pits planned for next week, discussions are on with landowners and timelines might change in line with that.

These were not featured in the LA Forum GI information slide yesterday as the site was not on the list originally but has been brought forward.

My colleagues are in touch with relevant landowners and parish councils, just keeping you looped in case of any questions coming your way, hope this helps. (see attached leaflet from EWR)

Sunisha Tharappan - DCO Engagement Lead-MVL

EastWestRail Integrated Project Team -D 020 7651 0434



The Three Parishes Outings have commenced for this year.

These outings are for those who are 60 years of age or over and live in the parish of Woburn Sands, Wavendon and Bow Brickhill - but don't worry if you don't as you can go on the list for an extra £1.50.

Telephone Woburn Sands Town Council 01908 585368 and you will be put on the list.

The coach picks up at several points in Wavendon, Woburn Sands and Bow Brickhill leaving at 9.30 and leaving the destination at 4pm, you have free time to do what you like.

The outings run on the third Wednesday of the month, come along sightsee, wander around the shops enjoy coffee and lunch. Tickets £15.50 out of area £17.00.

The organising committee would like to thank the three Parish and Town Councils for subsidising these outings without this the outings would not be able continue.

- 18 June - Stratford on Avon with option to go to Charlcote House & Park
- 16 July - Bury St Edmonds
- 20 August - Springfields Spalding
- 17 September - Marlow
- 3 December - Christmas



Milton Keynes City Council is pleased to invite you to two events taking place on Monday 23 June 2025.

Please see attached invites for Armed Forces Flag Raising and an RAF Evening Engagement.

Upon RSVP, we'd be grateful if you could confirm if you will be attending one or both events and guest name where applicable.

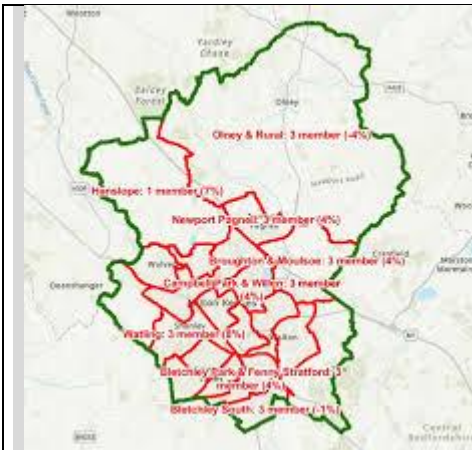
We look forward to hearing from you.

Siobhan Pitkin
Business Support and Civic Events Manager

T: 01908 252426

M: 07979 831531

E: Siobhan.Pitkin@milton-keynes.gov.uk



New Danesborough – or back to the futureMilton

Keynes is set to have new electoral wards for the May 2026 local elections following an independent review and two consultations by The Local Government Boundary Commission.

<https://www.lgbce.org.uk/all-reviews/milton-keynes>

The Local Government Boundary Commission is the national body that draws boundaries for English elections. As population changes over time, the Commission routinely reviews an area's boundaries to ensure councillors represent about the same number of electors. Milton Keynes' boundaries were last reviewed and redrawn in 2014.

The Commission has published final recommendations for changes, proposing that the number of city councillors should be increased from 57 to 60, and the number of wards be increased from 19 to 21.

Under the new proposals there will be 19 three-councillor wards, 1 two-councillor ward (New Bradwell), and 1 single-councillor ward (Hanslope).

Further information can be found on the review website, including an interactive map. The changes become law once Parliament has approved them ahead of the May 2026 local elections, when all Milton Keynes City Councillors will be up for election.

To register to vote, you need just five minutes and your National Insurance number – register online. <https://www.gov.uk/register-to-vote>

With regards to Danesborough Ward the report reads

We have considered the proposal carefully and are persuaded to amend our draft recommendations. This change has a marginal impact upon electoral equality, with both wards continuing to offer minimal variances. The change requires us to create a relatively small parish ward in Walton parish, which is forecast to contain roughly 180 electors. However, we are content that this does not outweigh the benefit of uniting the Glebe Farm estate in a single ward and using the strong and clear boundary of Ortensia Drive and Groveway.

Walton Community Council also proposed adding a section of Wavendon parish based on the Church Farm development into a ward based on Walton. This would require the creation of a parish ward of Wavendon parish with no current electors, which we do not consider is compatible with effective and convenient local government. We have therefore not made the change proposed, but we can consider a related alteration to ward boundaries if the parish boundaries in this area subsequently change via a Community Governance Review.

Walton Community Council also suggested that the name of our proposed ward should be altered from “Walnut Tree” to “Walton”. We note that “Walnut Tree” is the name of a single estate within the ward, and are content to amend our draft recommendations, accordingly, proposing the name “Walton” as part of our final recommendations.

Parish Forum



Parishes Forum

Please find agenda below for the ‘in person’ Parishes Forum, which was held in the Council Chamber, **Civic Offices on 12 June 2025**. Please note that this is a full ‘in person’ event. Will report verbally at the meeting on any outcomes – presentations.

Refreshments (and networking opportunities) will be available in the lounge outside the Chamber from 5.00pm. Some of the presenters may also be available in the lounge from 5.00pm. In addition, a couple of partners have been invited to ‘set up a stall’ in the member’s lounge. MKCC officers are awaiting their confirmation.

The Forum will commence at 6.00pm There will apparently be further networking opportunities after the Forum, in the lounge, between 8.00pm and 8.30pm

Welcome and Apologies

1.1 Apologies for absences

1.2 Notes from previous meeting

2. Planning Relationships and Who’s Who
Jo Payne (Planning Relationship Manager)

3. MK City Plan 2050 - Regulation 19 stage
Andrew Turner (Planning Policy Manager)

4. Planning Enforcement – what we can do

Pavan Hira (Planning Enforcement Officer)

5. Armed Forces Covenant

Johanna Hyrcak (Armed Forces Covenant Project Manager)

6. Section 106 / Planning Obligations

James Williamson (Monitoring and Implementation Team Leader)

7. Landfill Communities Fund

Luke Gledhill (Principal Waste and Minerals Planning Officer)

8. Parish Successes

(Eirwen Tagg – Parish Manager, Great Linford Parish Council)

9. Good News and Hot Issues

10. Date of Future Meetings

- 11 September 2025
- 4 December 2025
- 12 March 2026

MKCC Cabinet Decisions

Changing because we have to is the name of a new MKCC corporate stability strategy. It is being brought forward as we prepare for our three-year financial settlement from Government which we expect in November or December 2025.

The strategy sets out the current challenges we face and proposes three ‘must do’ areas where we should focus our efforts.

These are:

- Become a highly productive organisation.
- Use evidence to improve service impact.
- Only do things ourselves where it makes sense.

<https://milton-keynes.moderngov.co.uk/documents/s24426/Changing%20Because%20We%20Have%20To.pdf>

LGA Peer Review of MK City Council

Colleagues are invited to note the report of the Corporate Peer Challenge (CPC) conducted by the Local Government Association (LGA) from Monday 10 March to Thursday 13 March. The undertaking of a CPC was set out in the Council plan under the heading of 'Financial stability' and is a highly valued improvement and assurance tool that is delivered by the sector for the sector.

The CPC report begins by describing MKCC as 'A high-performing and well-run council with a strong track record of delivery' and 'commends the council's ambition and looks forward to seeing how Milton Keynes continues to thrive'. CPCs are not inspection and do not result in a rating in the way regulators such as the Care Quality Commission and Ofsted do, however the findings of the peer team contained in the body of the report can be read as placing MKCC in a top tier.

<https://milton-keynes.moderngov.co.uk/documents/s24411/Corporate%20Peer%20Challenge%20Covering%20Report.pdf> and the report can be found at

<https://milton-keynes.moderngov.co.uk/documents/s24412/Annex%20A%20-%20LGA%20Corporate%20Peer%20Challenge%20Report.pdf>

East West Rail



East West Railway Company (EWR Co) has published its Non-Statutory Consultation (NSC) update report.

Our third non-statutory consultation took place between November 2024 and January 2025. As part of this process, we asked for feedback on our latest proposals and designs. Since our consultation closed, we have been carefully considering all the feedback we received, and that feedback will help inform our final design which we will present at our statutory consultation next year.

More than 6,000 people responded to our latest consultation, which included over 90,000 individual responses. This update report contains a summary of the themes of this feedback and how it is being considered, as well as a summary of how we approached the 2024 non-statutory consultation and details about the way the consultation was delivered.

Land, property and statutory blight

At the start of the consultation, the Secretary of State for Transport issued Safeguarding Directions for EWR. Safeguarding land means that statutory blight provisions now apply, so if you own and occupy a property in the safeguarded area and you would like to move, you may be eligible to serve a blight notice asking us to buy your property before we need it to build the railway.

The Safeguarding Direction also means that if a local planning authority receives a planning application for a development on land that is within the safeguarding boundary for EWR, they must consult us before deciding whether to grant planning permission. This allows us to comment on potential conflicts and suggest measures that could be taken to resolve them and, where possible, allow development to go ahead.

As part of the consultation, we sent letters to land and/or property owners directly affected by the proposals detailing how their land may be impacted. This letter provided information on the proposals and the implications for their property, ensuring that they had the opportunity to engage in the consultation process.

The EWR report is attached



Sir Michael Lyons Report – The New Towns Taskforce

Report from the Town & Country Planning Association

The New Towns Taskforce was established quickly after the 2024 General Election with the chair and deputy chair, Sir Michael Lyons and Dame Kate Barker respectively, being announced and the government publishing a policy statement at the end of June. The Taskforce is expected to report to the government in mid-June.

The Labour Party manifesto stated that a Labour government would work ‘in partnership with local leaders and communities’, to build a new generation of new towns, ‘inspired by the proud legacy’ of the post-war New Towns programme. Importantly, it went on to states that ‘alongside urban extensions and regeneration projects, [the new towns] will form part of a series of large-scale new communities across England.

The Association is clear that there is much to learn from the post-war New Towns programme [see for example our recent evidence to the Lords Built Environment Committee inquiry into the practical delivery of the New Towns] and attempts since then to enable large scale new communities.

There is much to learn from the post-war New Towns programme and attempts since then to enable large scale new communities.

The post-war New Towns, of which there are 32, are now home to 2.8 million people. And we will publish more blogs on that in the coming weeks. But, before that, we thought there might be a need to be explicit, that what sets the post-war New Towns programme apart from programmes since then, is that there was a different, and successful, delivery model.

The post-war New Towns, of which there are 32, are now home to 2.8 million people. Development Corporations: a successful delivery model. The New Towns were built using New Towns Development Corporations. These bound together vision, strategy, consent and delivery. They undertook land assembly, master planned and then controlled delivery. That delivery was undertaken in partnership with the private sector including institutional investment, but they were public sector led.

While the Development Corporations required upfront investment from the government, it got results. By 1957, the 14 New Towns in progress were delivering around 12,000 homes a year.

While this required upfront investment from the government, it got results. By 1957, the 14 New Towns in progress were delivering around 12,000 homes a year. At its peak, Milton Keynes was delivering 3,370 homes per year [see Lock and Ellis: New Towns: Rise, Fall and Rebirth]. And, that investment was paid back with interest by the 1990s.

New Towns alone cannot meet the government's housing targets But, those statistics lead me to my second point. That a new generation of New Towns, if done well, is an important part of the solution to increasing the delivery of much needed high-quality homes in sustainable, healthy communities. It is not, however, a silver bullet to achieving the government's housing targets. Not least because even if the Taskforce is looking to identify schemes that can be progressed quickly, they will deliver a relatively small number of homes before the next election. Large scale schemes take time.

While we hope the Taskforce will be more ambitious, we know that the Terms of Reference referred to schemes of at least 10,000 homes. If 12 sites are identified, each with a capacity to deliver 15,000 homes, that will be a total of 180,000 new homes. An important contribution, but this national programme needs to be part of a wider programme including locally led regeneration and strategic growth, hopefully supported by new strategic planning processes, and up to date local plans.

This needs to be part of a wider programme including locally led regeneration and strategic growth, hopefully supported by new strategic planning processes, and up to date local plans.

While therefore there is likely to be lots of interests in new New Towns in the coming months, a continued emphasis and investment in the whole system will be needed, as will support for public sector led delivery models, if the Government is to achieve to increase in housing numbers it has been clear it wants to see.



Central Beds Call for Sites - As a result of this initial assessment, 174 sites have been initially discounted for the delivery of new homes. These sites still need to be assessed for other uses such as Gypsy and Traveller provision and employment use (where they have been put forward for those uses). There are also some sites we have discounted that may not be suitable on their own but will be reconsidered alongside other sites that have either been submitted or are in emerging Local Plans being prepared by neighbouring councils.

CBC has produced an interactive map that shows the location of the sites that have been submitted, and what type of development they have been promoted for.

<https://consultations.central-bedfordshire.urbanintelligence.co.uk/public-web-map?eventId=85>

The full list of submitted sites (identifying those that have currently been discounted for residential use) can be found here:

<https://centralbedfordshirecouncil.sharepoint.com/sites/Communications/Website%20and%20intranet/Forms/AllItems.aspx?id=%2Fsites%2FCommunications%2FWebsite%20and%20intranet%2FWebsite%20Documents%2FPlanning%2FLocal%20Plan%2FNew%20Local%20Plan%2FCall%20for%20Sites%2FWard%20Schedules%20%2D%20Sites%20Publication%20May%202025%2Epdf&parent=%2Fsites%2FCommunications%2FWebsite%20and%20intranet%2FWebsite%20Documents%2FPlanning%2FLocal%20Plan%2FNew%20Local%20Plan%2FCall%20for%20Sites&p=true&ga=1>



Local Plan
Consultation

MK City Council Call for Sites for Travellers - Gypsy and Traveller Accommodation Assessment 2025

I raised some points of clarification with MKCC officers the response to which I reproduce below.

Thank you for your email. To answer your queries

1. Is the call also for site(s) for travelling show people?

Yes, the Call for Sites does include plots for travelling show people. In the Call for Sites form, there is a specific tick-box which allows this use to be put forward.

2. If the site in the SEMK at Bow Brickhill is lost due to EWR and the need to build a bridge at Bow Brickhill will another site be sought in SEMK or will that lost site (if it is lost), simply be absorbed?

We will need to see what draft proposals EWR come forward with in and around the Bow Brickhill level crossing, and when they come forward. They are aware of the proposed location for the gypsy and traveller site as part of SEMK, as well as the wider SEMK movement network. As we prepare the Regulation 19 MK City Plan 2050, we will be reviewing all of the proposed gypsy and traveller site allocations, taking into account the updated Gypsy and Traveller Accommodation Assessment and the outcomes of the associated Call for Sites exercise. Should further clarity around the EWR draft proposals emerge over the coming weeks then this will also need to be considered.

3. How is the evidence gathered to assess need for how many pitches etc? I am sure it is not simply making contact with that community and asking how many pitches they would ideally like? So, how is the assessment of demand / need made and what is the evidence base used?

Arc4 have been commissioned to carry out the Gypsy & Travellers Accommodation Assessment. As part of the methodology for calculating need, evidence gathering includes a mixture of Stakeholder Consultation (including departments within MKCC, neighbouring authorities, G&T organisation etc), Household surveys/site visits, as well as analysis of existing data, such as Housing Waiting Lists.

I trust this is of assistance, but if you have any further queries let me know.

Daley Wilson
Principle Planning Officer (Development Plans)

Section 106

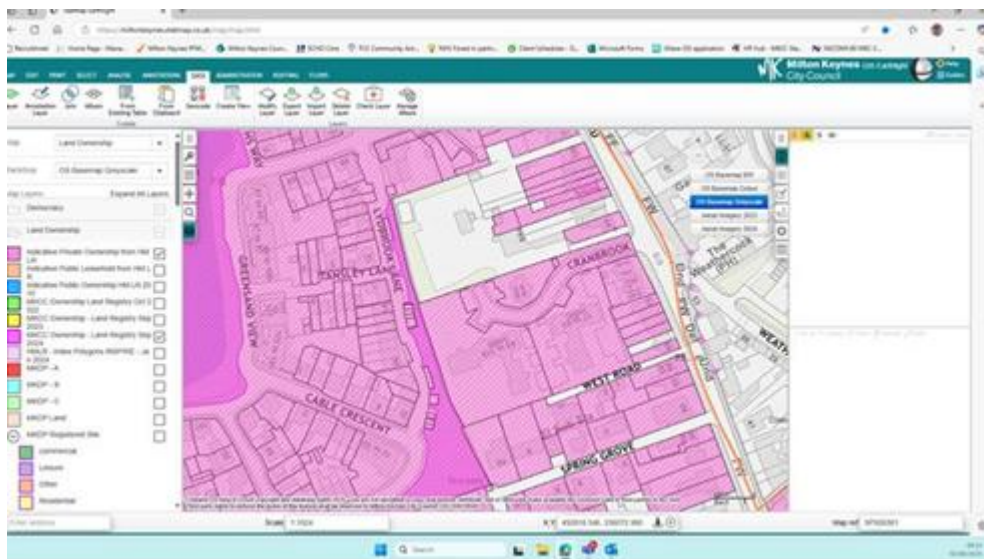
I have attached a report from MKCC to this report. I might not be reading the report right, but these are the two that looks most likely and need to be spent soon.

13/00005/FUL	Communities and Leisure	S3,2.2c	05 Dec 2026	804.23
13/00005/FUL	Communities and Leisure	S3,2.4c	05 Dec 2026	1,351.81

They don't add up to huge amount, but they might get the TC a couple of modest notice boards or one nice one. Will probably all come down to whether notice boards are considered 'Community Facilities' because that's the line they appear on!

Parklands

Phil Snell has requested some works to be carried out as per the attached picture (Also removal of sections of the old perimeter fence by Lydbrook Lane). He tells me he has had a walk around and could not see any litter, the general landscape gets visited every six weeks. The conservation area apparently looked fine, but the brambles will need cutting back later in the year. Couple of pictures below relating to the inadequate fencing.



Resident communications and concerns

Walton Road - As a further update, our supplier for the light up signs 'Swarco' has told us they are awaiting a component, which may take a further 4 weeks. We're rather disappointed about this, after being promised a different timescale, and we are exploring other providers – although the system specification will be the same.

Murray Woodburn – Head of Highways

Housing Delivery

I thought you might find this report from Savills to be of interest.

<https://www.savills.co.uk/insight-and-opinion/savills-news/377831/housing-delivery-set-to-fall-over-the-next-five-years-despite-recent-planning-reform-as-demand-for-new-homes-remains-subdued>

Request for double yellow lines

<https://www.milton-keynes.gov.uk/parking/double-yellow-line-requests#:~:text=road%20safety%20issues,-,How%20to%20apply%20for%20double%20yellow%20lines,the%20Request%20form%20template%20below.>

The above link details how to apply for double yellow lines

As a parish council if we wish to apply following a community consultation we must use the request form template set out at the link.

The full toolkit for Parish, Town, and Community Councils contains;

- Double Yellow Line request - request form
- Double Yellow Line applications - Guidance Notes
- How to run an informal consultation - Guide
- Template letter for residents
- Double Yellow Line application process - stages 1-6



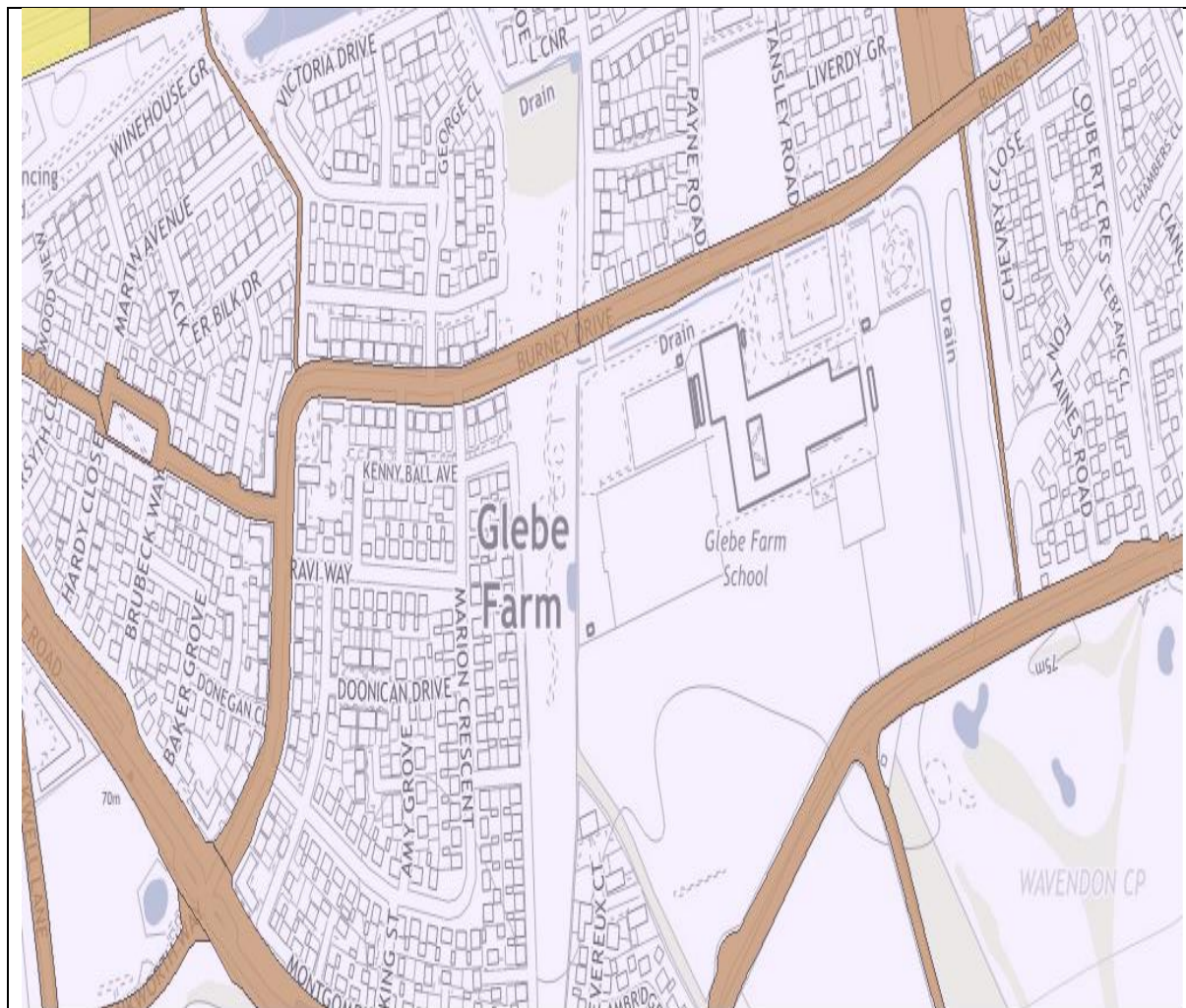
St Marys Church, Wavendon - Memorial Garden -

Thanks to a generous grant from MK Council s106 planning funds, we have recently completed and opened a lovely new Garden of Rest in Wavendon churchyard (Walton Road MK17 8LY). This is in the grounds of St Mary's church, a beautiful 800-yr-old building.

Anyone who lives in Wavendon Parish can choose to have their ashes buried here and their name carved onto one of the monumental stones. (There are modest fees for both - but a fraction of what you might pay in other local cemeteries.) There are benches to sit

and reflect, and the churchyard is open 24 hrs a day, 7 days a week, for relatives to visit anytime.

If you would like to explore this option for yourself or a loved one, do contact Rev. Matt Trendall on matt.trendall.mk@gmail.com



Residents report extensive weed growth on Burney Drive at the verges close to the Glebe Farm School site. This has been reported and we have received the following response from the Service Area,

- Burney drive is the largest road thru Glebe Farm, can we please have some detail on the exact location so we can check cleaning and adoption details.
- Adopted areas are sprayed 3 times a year with mechanical cleansing in between.

I have reported the exact location(s)



Seven new average speed cameras along 5-mile stretch of A5 between Milton Keynes and Bedfordshire

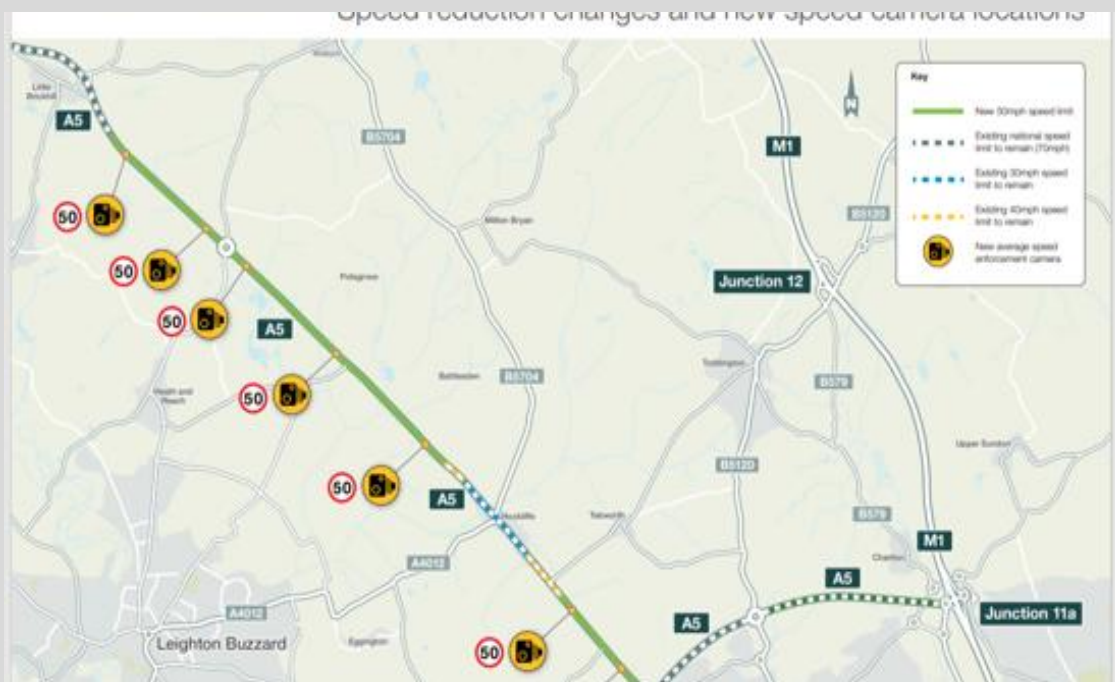
Work has reportedly been completed to install a series of average speed cameras along a five-mile stretch of the A5 to reduce the number of people killed or seriously injured on the major A-road.

National Highways say the key route across Bedfordshire and Buckinghamshire will 'benefit' from the new scheme which will make the road safer for drivers and those living nearby.

Work started on the A5 safety scheme overnight and will see seven new average speed cameras and associated signage installed along a five-mile section of the A5 between Thorn Roundabout, near Dunstable and Little Brickhill, on the outskirts of Milton Keynes.

As part of the improvements, sections of the road will have their speed limit reduced from 60mph to 50mph.

Work on the £2.1m project was expected to be completed by June 2025.



Highways Programmes for 2025-2026

The Council's highways programmes for this financial year are now available at <https://www.milton-keynes.gov.uk/highways/our-policies-and-processes/managing-our-assets> including:

- Road resurfacing and road surface treatments
- Traffic signal and road safety schemes
- 20mph zone schemes
- Carrier Drainage works
- Street name plates

Each programme has been compiled by highways officers and engineers using information from inspector assessments, AI data and customer reports. Works are scheduled to ensure that any safety-critical issues are prioritised. There may be some minor additions or changes to these lists throughout the year, however, this is the principal work programme that our service provider Ringway will be delivering over the next few months.

<https://www.milton-keynes.gov.uk/highways/our-policies-and-processes/managing-our-assets>

All works on the highway require an approved permit first and are listed on One.Network <https://one.network/> including any diversions, closures, dates and details about the works.



Sustainability Strategy – MKCC Consultation

Start Date 09 June 2025

End Date 01 September 2025

Contact Sustainability Email carbon@milton-keynes.gov.uk

Consultation

MKCC wants your feedback on the new draft new Sustainability Strategy for Milton Keynes. This is the second sustainability strategy that Milton Keynes City Council has published.

The draft Milton Keynes Sustainability Strategy sets out the City Council's aims and ambitions for Milton Keynes on the climate agenda. In 2019, we published the first Milton Keynes Sustainability Strategy, and since then lots of work has been undertaken to make our city more sustainable.

Our new Sustainability Strategy will build on the great work delivered to date and updates the ambitions we have for the city. It updates the overall vision for the city to "Milton Keynes can be a world leading sustainable city, using the opportunities of growth to tackle the challenges of climate change and resource competition to create a more prosperous city for all our people and future generations".

It details four main aims for the City of Milton Keynes:

To reach net zero by 2030

To limit rising heat to 1.5 degrees based on the Paris Agreement

To prepare for the current and future impacts of climate change

To reach net zero for the City Council's activities by 2030

It sets out five clear themes for the City Council's activity; economy, energy, emissions, environment, and engagement.

The new Strategy will guide the work that Milton Keynes City Council will undertake to 2050. MKCC is seeking comments and feedback on the new Sustainability Strategy to ensure it reflects the views of everyone with a connection to the city.

While MKCC is primarily seeking comments on the new draft Sustainability Strategy, it has provided a suite of documents to help stakeholders understand the City Council's ambitions and the practical action it will take on the Sustainability agenda. These include:

The proposed Sustainability Action Plan for City activity

Their adopted Sustainability Action Plan for City Council activity

MKCC adopted Five Year Plan – Pathway to Net Zero 2030

MKCC Achievements to Date document, which outlines all of the progress made since the 2019 Sustainability Strategy was adopted.

You can read more about the City Council's journey to net zero on our dedicated webpage – www.milton-keynes.gov.uk/net-zero

How to Get Involved:

The consultation on the new Sustainability Strategy runs from June 9 to September 1 2025. You can share your thoughts by reviewing the document and submitting your comments [here](#).

Key documents

- Draft Sustainability Strategy -June 2025 <https://www.milton-keynes.gov.uk/sites/default/files/2025-06/Draft%20Sustainability%20Strategy%20-June%202025.pdf>
- Five Year Plan - Pathway to Net Zero 2030_Annex A_Five Year Plan - Pathway to Net Zero 2030 https://www.milton-keynes.gov.uk/sites/default/files/2025-06/Five%20Year%20Plan%20-%20Pathway%20to%20Net%20Zero%202030_Annex%20A_Five%20Year%20Plan%20-%20Pathway%20to%20Net%20Zero%202030.pdf
- Five Year Plan - Pathway to Net Zero 2030_Annex B_Action Plan https://www.milton-keynes.gov.uk/sites/default/files/2025-06/Five%20Year%20Plan%20-%20Pathway%20to%20Net%20Zero%202030_Annex%20B_Action%20Plan.pdf
- Five Year Plan - Pathway to Net Zero 2030_Annex C_Technical Summary for Rebaseline of Emissions https://www.milton-keynes.gov.uk/sites/default/files/2025-06/Five%20Year%20Plan%20-%20Pathway%20to%20Net%20Zero%202030_Annex%20C_Technical%20Summary%20for%20Rebaseline%20of%20Emissions.pdf
- Sustainability Action Plan (City) - June 2025 <https://www.milton-keynes.gov.uk/sites/default/files/2025-06/Sustainability%20Action%20Plan%20%28City%29%20-%20June%202025.pdf>
- Sustainability Strategy achievements to date document <https://www.milton-keynes.gov.uk/sites/default/files/2025-06/Sustainability%20Strategy%20achievements%20to%20date%20document.pdf>

Cllr David Hopkins - Representing Wavendon at MK City Council

June 2025