



Wavendon Parish Council – Chairman's Report (October 2025)

Parish Clerk

I am delighted to report that following an extensive series of interviews we have selected and made an offer to an excellent candidate for the position of Parish Clerk. I will report more at the next Parish Council meeting but would like to express my thanks to Cllr Thomas and Cllr Levermore for forming part of the interview panel with me and to Alan Kemp (Parish Clerk) for all his supportive work in researching aspects of the process and producing supportive literature etc.



Have Your Say Community event. The Wavendon Parish Council hosted a well-attended Thames Valley Police *Have Your Say* event at the Wavendon Hub off Dankworth Way on Thursday evening 16 October.

Residents raised issues regarding drug dealing, motor car cruising, shoplifting, issues connected with violent disorder, misuse of e-scooters and dangerous dogs.

The next local event in Wavendon is planned for January and other local events are planned for the following dates.

- Crime Prevention Stand

2:30PM - 4:00PM, Wed 26 November 2025

1A Bolebec Avenue, Eagle Farm South, Milton Keynes

- Crime Prevention Stand

10:00AM - 2:00PM, Sat 06 December 2025

Woburn Sands Market, Woburn Sands

More local TVP information at

<https://www.facebook.com/TVPMiltonKeynes>

and to contact your Parish Council go to

Wavendon Parish Council Clerk

clerk@wavendonparishcouncil.gov.uk

1. New play park north of the Stables.

MK City Council is now out to tender with responses due in early November. The city council (working with Wavendon Parish Council) will assess and hopefully award as quickly as possible after that, but it is difficult (but not impossible) to see mobilisation and start on site before the end of the calendar year. That should occur early in 2026, but I will report further regarding the full programme when MK City Council has a contractor on board.

Residents have responded to the Parish Council asking if an adults Trim Trail could be added to the design. MK City Council has responded by proposing that *the city council come back to this once it has the park and play provision in a more advanced stage of delivery.*

They comment that to start trying to make changes now would be likely to lead to a lengthy delay and they really just want to get someone appointed and get a programme for the works from them. They can potentially come back to this, if a funding source was ever identified, but that would also involve changes to the planning permission so would not be a quick process. The Parish Council is asking if jointly the city and parish could try getting some sketches together to show how the trim trail could be done artistically, that might be an interesting community activity and be funded from the s106 planning gain arts funding.



2. Temporary community building at Glebe Farm school

MK City Council has shared the Portakabin proposals with the school and the Parish Council, and the school came back to MKCC with some questions. Some of these are now back with Portakabin for technical responses. Once again, even with the best will in the world this looks like it might get in for Planning at MK Council possibly before the Christmas holidays but won't come out the other end until early in the New Year.



3. Development progress opposite Glebe Farm school and any certainty regarding a community facility (or facilities) there?

Still not a certainty but the developers, U&C, remain open to incorporating the suggestion in their proposals for the remaining space behind the Local Centre. This is not a priority for them at this time though so potentially at least middle of next year before we might see some initial thoughts.



4. The light-controlled crossing on Burney Drive serving St Marys School

I am following this up both as Parish Council Chair and Chair of governors at St Marys Primary School. DWH still have a presence on the site, but it is reducing so this would need to happen soon if it is being developer provided.

5. Allotments update

Nothing new to report on the MK City Council side really. The city council has had some works done on both available sites to keep them in shape going into the winter but are waiting to hear from the Parish on next the steps.

6. Any 106/Tariff monies still to be allocated for Wavendon Parish (old and/or new)?

Colleagues often ask about ongoing 106 funding and be assured that I continually run a check on Exacom but I think we are just about fully aware already of any significant sums.



7. Update on redway connectivity in new parts of Wavendon

Bloor Homes came back to the Parish Council after MK City Council had initially given up on them and they appear willing now to deliver the connection on Lower End Road between their site and the Taylor Wimpey development parcel so there is a chance that could happen before March 2026. The other connections will still be scheduled for the 2026/27 financial year



Updates on Meeting with Glebe Farm School

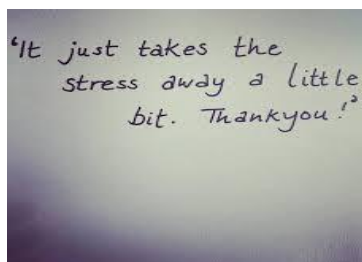
The clerk and I met with Shaaron Forbes (Operations & Project manager) at Glebe Farm School in early October. We wanted to discuss how grants forwarded via the Parish Council was assisting in the school's community-based projects and how we add additional value to that work.

Foodbank

There are now three sessions per week.

Community Fridge

Operates on a Tuesday.



Kickback Kitchen

Kickback Kitchen at Glebe Farm School is a non-profit social enterprise that provides ready-to-reheat meals on a "pay what you can" basis, using surplus and leftover ingredients. It operates by transforming "lost" ingredients into nutritious meals and aims to create a more resilient community by tackling food poverty, reducing waste, and strengthening the local social economy. The pilot has been self-funding and will continue even after the initial 12-month pilot is concluded.

The Parish Council is donating £670 towards an additional fridge and freezer to enable this successful initiative to expand and continue.

Community Building (Portakabin)

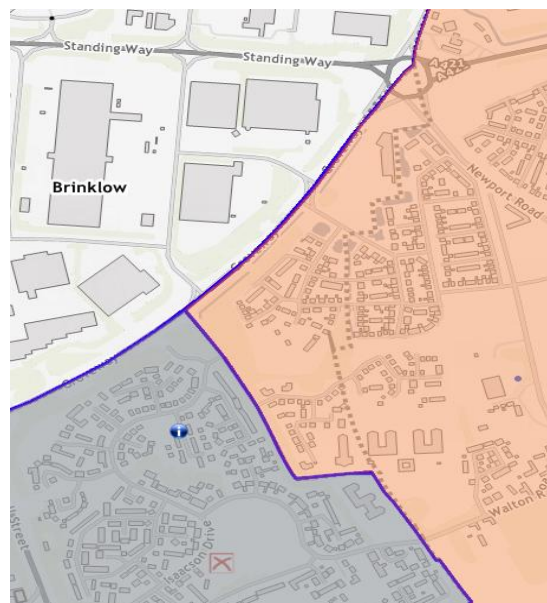
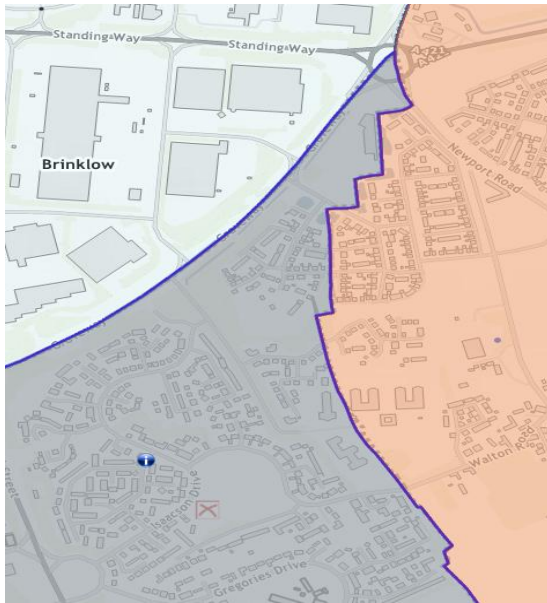
In addition to what is reported above we can report that the temporary building will be on an initial two-year hire but the school is keen to extend that use to incorporate school nurse related community work. IFtL will be picking up the utility bills etc for the building.



School Crossing Patrol Officer

After some initial delays at the City Council end the monies (£5K) to cover the cost of a school crossing patrol officer have been released and recruitment process started. This money for what is a much-needed road safety initiative for the safety of children attending the school was agreed by MK City Council following the intervention (question) by the Parish Council Chairman at a city council meeting.

- **Parish Boundary Changes** – The changes to the parish (and ward) boundary changes between Wavendon Parish and Walton Parish will be in place from 1 April 2026) the maps below show a before and after situation.



20 MPH Signs – Engineers are now installing the 20 MPH signs on the roads off Burney Drive and (as soon as the route is fully adopted) on Burney Drive as well.



Bus Shelters – I enquired with MKCC if it were permissible for Wavendon PC to install bus shelters ourselves (as we had done in the past). The response was as follows *'Unfortunately not. We were advised by legal some time ago that we cannot devolve shelters to Parishes in this way as the structure is on the highway and provides a service to the public, so the Highway Authority (MKCC) remains liable irrespective of who purchased and installed the structure'.* **In addition, the city council continue** *'Elmswell Road is currently not adopted highway so as with parts of Burney Drive the deployment of a shelter currently lies with the developer'.* **With regards to bus stops and shelters on Dankworth Way MKCC states** *'With regard to additional stop requests we continue to communicate with operators and would seek to introduce new stops at their request, pending safety audit in order to ensure that stops are going in where operators will register to use them. We can pass this request to the operators to consider'.*



Outstanding Issues relating to Wavendon Hub – The

Clerk, Cllr Hill and I are met with all the relevant officers at MKCC on 23 September. The city council agreed to repay the water charges paid by Wavendon PC (over £3,000) and agreement was reached on signing the freehold on the building and neighbouring land by year end. A fuller verbal report will be provided at the Parish Council meeting.



Walton Road - The *Pedestrians in the Road Ahead*

warning signs have been installed on the notorious double bend on Walton Road. With regards to questions relating to the upcoming consultation on road safety options on this road MKCC responds as follows *'The public consultation on Walton Road safety measures will be open for anyone to make comments however we when we review the comments, we will take the individuals' address into account'*.



E-Bikes & Scooters – Cllr Penfound and I met with representatives

of Dott Bikes (also speaking to some extent for Lime Bikes) on 14th October. The trial has been extended to 2028, and a separate meeting will be established with Tom Newman from Lime Bikes as it seems for the first time that the Geo Fencing limits of the range of the bikes from both companies is now at variance. They are keen to see TVP prosecute parents who allow under 18-year-olds to ride the bikes unlawfully and this was raised at the have your Say meeting with TVP held in the village on 16 October. We discussed the need to identify docking stations to be installed before the scheme extends and they were keen to work with the Parish council to identify suitable sites.

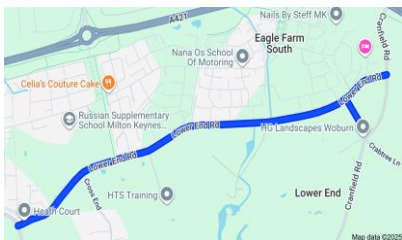
The limit of the range of Dott Bikes is Walton Road and the junction of Newport Road and Dankworth Way whilst Lime seems to be extending to the railway crossing at Woburn Sands.



CCTV Cameras on Newport Road. Residents have raised questions regarding the number of CCTV cameras that have positioned attached to MKCC Highways Signs on Newport Road. MKCC confirm that they have been placed there by East West Rail as part of its survey work and that the MKCC Streetworks team is aware of them and gave permission.



Junction of Elmswell Road and Groveway. Following this issue being raise again at the September meeting I went back to Highways at MK City Council who responded as follows *'We have considered whether making the junction at Glebe Farm/H9 Groveway left turn only however this would then cause congestion at the Walnut Tree roundabout. There is a significant amount of work taking place within this area now and into the next few months so we will review this junction at a later once the additional works are completed which affect Kingston, Brinklow and Monkston roundabouts'*.



Lower End Road – I raised the issues relating to road safety on Lower End Road with MKCC Highways who report back as follows - *A Road Safety Assessment was carried out when this area was built however, we'll also do another site check to ensure there are no new concerns.*

The new Road Safety Officer will be looking mainly at education and engagement on road safety however we do already have a Senior Highways Engineer who does the road safety assessments and will be able to check this location.

We do not have any incidents or issues logged for this location but if there is any evidence of persistent speed limit breaches (such as from a SID or a Community Speedwatch Group) then this should be sent to the police as they enforce speed limits.

It may be useful for any overgrown bushes/trees to be cut back to improve visibility, and this can be reported to the Landscape team’.



St Marys School Road safety and car park safety

issues – Following my enquiry MKCC Highways report ‘The new road safety officer and one of our traffic technicians will take a look at this location in November’.



M1 and A421 Noise impacting residents of Eagle Farm

South – MK City Council Noise Officer reports back as follows ‘I write further to your recent contact regarding noise from the M1 and A421 at Eagle Farm South. My colleague Gillian Clarke has discussed this matter with an officer at Highways England, they have advised that they would be willing to look into noise attenuation measures in this area but would need a formal request from a local MP to action this’.

Matthew Gilbert - Noise Officer

This being the case we have written to Emily Darlington asking for her intervention to see if this can be investigated formally.



Following the question from residents and Parish Council members as to why Wavendon and Woburn Sands was not included on the Mass Rapid Transit network outlined for Plan MK2050 and how would people from MK East travel to Universal Studios? MKCC responded as follows ...

'The MRT network has not been fully finalised at this time. Illustrative routes responding to our Local Plan proposals were proposed for the development of the business case, long prior to the Universal Studio site announcement. Routings across the whole network will be reconsidered at such a time as the project has funding to move forward, in line with any new development interests or requests for extensions.

We are keen to explore opportunities for expansions of the current proposed network with developers, subject to there being no adverse impact to route-wide journey times and that full priority is provided on any extensions to the proposed core routes. We fully expect the MRT network to evolve over time as development comes forward, and the illustrative routes were merely a snapshot for evaluation purposes. The actual network that is eventually delivered on the ground on day one is almost certain to be different.

We believe that a MRT extension serving the Universal site would be a positive addition to their travel plans for both employees and visitors, but the routing or design detail of this option has not yet been explored, but we would welcome the opportunity to discuss this with the UDX site promoters during the Special Development Order process'.



New Road safety Officer for MKCC Highways – Delighted to be able to report that a new Road Safety Officer (Barry Delaney) has been appointed by MKCC and started in that role on 6 October 2025.



Mayors Civic Service – I attended the MK

City Council Mayors Civic Service representing Wavendon PC and Woburn Sands Town Council which was held on 12th October. The Mayor Wolverton and Newport Pagnell are also in the picture along with the MK City Mayor, James Lancaster.



Trees for Wavendon Heights – Cllr Hill

and myself met with **Jo Roberts Community Engagement Officer** at the Marston Forest regarding the supply of replacement trees that have been lost to either vandalism or the extreme summer weather. We have agreed a one-off contribution grant of £1,638 towards the estimated costs of maintenance and aftercare of the trees to be donated and we shall report further on this initiative at the meeting.

Working with Community Action MK

The clerk and I met with Josan Race | Community Development Manager from MK Community Action regarding the details behind monies being offered as start-up grants to individuals and small community groups in the parish to kickstart their activities. Grants of up to £300 will be available for a variety of potential uses. Also working with Community Action we are jointly promoting the following initiatives in the newer parts of the parish, namely



Halloween Crafts at Eagle Farm

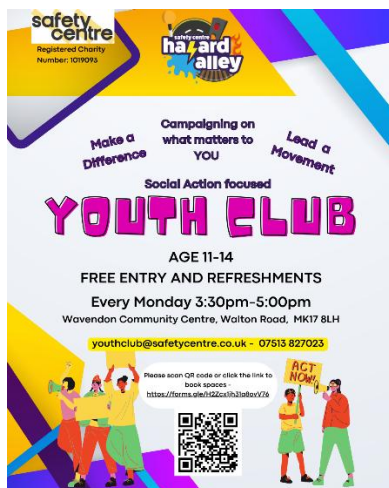
Join Community Action MK and supported by Wavendon Parish Council at The Car Park at St Mary's School on Wafandun Lane for some Halloween crafts and activities Thursday 30 October at 1-3pm

And



Halloween Crafts at the park. Join Community Action MK and Suez at Manor View Playground on Inwood Way, Towergate for some Halloween crafts and a special visit from the recycling truck!

Monday 27 October between 1-3pm



Youth Club – The Youth Club trial is close to concluding at the Community Centre on a Monday evening. Initial attendance has encouraging, and a review will be undertaken at the end of the eight-week trial period. We have agreed with the headteacher from Glebe Farm School to conduct some research with his students into the actual demand for a youth club in our community.

He writes as follows ‘I’ll create and share a Microsoft Form to capture the information you’re looking for; demand, preferred venue, activities, and suitable days/times.

Matthew Shotton – Headteacher (Glebe Farm School)



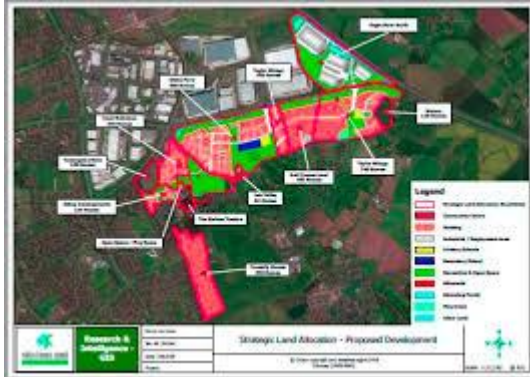
Arts Project Fiona Boundy Reports as follows

Unfortunately, we haven’t made a huge amount of progress as I have been working on Station Square for the last three weeks – this had to take priority.

I am due to write to the shortlisted candidates, interview with them over the next week or so with a view to appointing and hopefully starting in late Oct.

Many thanks,

Fiona



SEMK Stakeholders Group – The next meeting of the SEMK Stakeholders Group **will now be held** at the Wavendon Hub off Dankworth Way (note the change of venue) on Wednesday 12 November 2025 from 7pm to 8.30pm (**note the change of time**).



Elmswell Gate Park and Play Area, East of Tower Gate, Wavendon.

The Tariff programme is required to deliver a new park and play area facility within the new Elmswell Gate development, East of Tower Gate, Wavendon. The Landscape Architecture team have prepared detailed plans and specifications to procure a contractor to construct the works.

The works include the laying out of new footpath connections, soft landscape and a large neighbourhood play area. The contract value is estimated to be in the region of £850K - £950K.

The proposed Delivery programme is outlined below:

- Tender closes 22 October 2025
 - Evaluations and Moderations 19 November 2025
 - Contract Award 20 November 2025
 - Contract Start Date 24 November 2025
 - Works completed 30 June 2026.
-



- **East West Rail Stakeholders (virtual online) presentation (10 October)** - There seemed to be no major surprises or news, the EWR development seems to be being held up by parliamentary and other government processes. There were useful presentations about the environment and equality and diversity issues. The main thing those who attended (virtually) took from the discussion at the end was the shift from the earlier emphasis on closing all level crossings to now appearing to be keeping as many as possible open. The Universal Studios Theme Park has thrown something of a shadow over the project as well. A selection of two of the ten presentation slides is reproduced below

The Planning and Infrastructure Bill

The Planning and Infrastructure Bill (PIB) presents a significant opportunity to modernise engagement for nationally significant infrastructure projects. East West Rail (EWR) is working closely with government to understand and respond to the Bill's implications, particularly around consultation timing, stakeholder involvement, and iterative design development.

Our Engagement Vision

We see engagement under PIB as a strategic, iterative, and inclusive process designed to build trust, reduce risk, and improve outcomes.

Our approach is structured to:

- Align with government policy
- Enable meaningful two-way dialogue
- Plan for a consultation on final proposals before submission

Meeting chat

tracy bailey (Unverified) 18:13

Alex Poppleton I had a letter from Lord Hendy's office this week that basically said 'don't know!'

Alex Poppleton (Unverified) 18:14

Yes please come to Woburn Sands

We can find you a location

when we know more about when you want to come

Nick Burton (Unverified) 18:18

We are still hoping for a visit to Husborne Crawley - Reading Room or St James church can be used as venues.

Type a message


EW R Co Fenny Stratford - Kempston Enhanced Local Representatives Group (LRG) meeting

57:32

Take control Pop out Chat People 14 Raise React View More Camera Mic Share Leave

Inclusive Design

We are looking at inclusive design across all assets, including:



- Stations and Rolling Stock
- Depots, Sidings & Stablings
- Control Rooms / Centres
- Public Rights of Way (Including Level Crossings)
- Equipment Buildings & Routewide Infrastructure
- Evacuation & Maintenance Walkways

All users – not just passengers but also staff roles (e.g., operators, maintainers)

Sarah Jacobs (Unverified)

18:42 09/10/2025



Draft Local Transport Policy – Consultation

Consultation was due to start in October and will run for 12 weeks on the MKCC Draft Local Transport Plan. However, it has yet to commence, and I suggest we have this as an agenda item in November to agree a response.

New Clerk appointed at neighbouring Woburn Sands TC.

Delighted to report that Joanne Farrant has now started as the new town clerk in Woburn Sands and her role commenced from 1 October.

The Wavendon PC clerk has met with Jo to discuss issues of common interest to both communities.

- **The opening of the East West Rail (EWR) Oxford to Milton Keynes link is delayed**, and it appears to be partly due to the ongoing union disputes over the operational model, specifically the use of "driver-only" trains. While Chiltern Railways has not officially

commented on the opening date, a source suggests the delay is tied to getting an agreement with unions about how the services will operate.



Union Dispute: The primary cause of the delay seems to be a dispute between Chiltern Railways and unions over the introduction of driver-only operated trains, which unions have opposed on safety grounds.

Other Delays: The opening has been pushed back from earlier expectations, and while some sources blame the union dispute for the final delay, others suggest the entire project has been subject to delays.

Awaiting Opening Date: An official opening date has not yet been announced, and while testing is underway, passengers are not yet able to travel on the line.

Project Status: The track work was completed earlier in 2024, and freight services have already begun using the route. The plan is for passenger services to begin in December 2025 now seems to be in serious doubt.



And finally, I met with the **Thames Valley Police & Crime Commissioner (Matthew Barber)** at the end of September to discuss various concern relating to shoplifting, e-bikes, speeding, criminal damage and related matters in our community and he has responded very positively on a number of these issues.



- **Community Action MK AGM** – As Chairman of Wavendon PC, I attended the Community Action MK AGM on 2 October. A report has been shared separately with town council colleagues, but CAMK has also compiled a list of useful links for town and parish councillors to review, including information about the organisations that the speakers from the event represented:

- Community Action: MK Anti-Racism Statement and Anti-Hate Resources:

<https://communityactionmk.org/our-stand-against-racism/>

- Community Action: MK Volunteering Hub sign up:

<https://volunteeringhub.communityactionmk.org/index.htm>

- Q: Alliance: www.qalliance.org.uk

- Yoga for Health Alliance: <https://volunteeringhub.communityactionmk.org/volunteers/provider-profile/YogaforHealthAllianceMiltonKeynes/>

- Sustainable MK: www.mkcommunityfridge.org/sustainable-mk

- Trubys Garden Tea Room / MK Ansars Project: <https://trubysgarden.org/>

Cllr David Hopkins

Chairman – Wavendon Parish Council - October 2025

David.hopkins@milton-keynes.gov.uk or via the

Wavendon Parish Council Clerk

clerk@wavendonparishcouncil.gov.uk