



Chairmans Report – January 2026

Parish Council Meeting – 19 January 2026 at 7.30 pm - Public Question Time: The time allocated is at the discretion of the Council/Chairman. Residents are invited to give their views and question the Parish Council on issues on this agenda or raise issues for future consideration at the discretion of the Chairman. Members of the public may not take part in the Parish Council meeting itself. A Councillor with a prejudicial interest in a particular issue may address the Council on the issue during Public Question Time subject to the Councillor leaving the room in the event of an exchange of the issue between the public and the Council during this period. 3 minutes per person if public wish to speak, or at the Chair's discretion.

Welcome to our new Parish Clerk, Lesley Sung who joined the Wavendon Parish Council team on 12 January. Lesley has long experience of managing parishes coming most recently from Whitehouse Parish Council and prior to that managed the growth of Walton Community Council.



Remember all contact and enquiries to the Parish Council should be made, in the first instance to Lesley as clerk at Wavendon Parish Council Clerk clerk@wavendonparishcouncil.gov.uk

Chairmans snippets

Walton Road interactive sign

Report from Senior Highways Officers at MK City Council. *Officers believe that the system is working well for pedestrians, scooters and cyclists when they approach the bend from either end, and from Phoebe Lane, but we have received reports that it is not detecting some residents who live on the bend when they leave their premises.*

Because of this we acknowledge that the system is not working as well as we had hoped and may not be illuminating when some pedestrians are present. We will continue to work with the contractor to see if additional sensors can be used to ensure full detection coverage.

An online public consultation is likely to start by the end of this month as we are conscious of the pre-election sensitive period and would prefer to start and end the consultation before this starts at the end of March. The Walton Road public consultation questions will be set up on the MKCC

Commonplace system but will be shared with all three ward councillors for comment before the consultation goes live.

This 6-week public consultation will be open to anyone to make comments on the proposals listed in the consultation documents.

East West Rail

EWR is proposing that, instead of holding a round of meetings spread over a couple of weeks as they have done previously, they move to a series of in person and webinar sessions between now and the end of March. This approach will ensure its engagement aligns more closely with key project milestones and other external factors, including:

- The Planning and Infrastructure Act (PIA), which gained Royal Assent last month, and its impact on 2026 consultation planning and the development of a community consultation strategy.*
- Planned community engagement sessions scheduled for January-March 2026 (more information below).*

Community engagement - design update sessions (DUS)

These sessions are focused in-person public engagement events. They're designed to provide impacted local communities the opportunity to understand and discuss evolving and new design proposals, as well as speak with project staff about design updates provided in the recent You Said, We Did publication. The aim is to update communities who would not have had the level of information that statutory stakeholders have had.

The sessions will share information and early insight ahead of the consultation later in 2026. The consultation will offer more detailed information and enable communities to submit feedback on the latest design updates.

Each DUS will have two scheduled events (one weekday and one weekend, times tbc) which will be delivered in person. Dates and venues for some are still being finalised but the working plan at the moment is:

Local Media reports East West Railway Company has announced a series of community events discussing the latest railway designs. Starting this month, the design update events are being held across the planned line of route which will connect Oxford, Milton Keynes, Bedford and Cambridge.

Two events will take place in Bletchley, Milton Keynes. The first, in South Central Institute of Technology, will be held from 2pm - 7pm on Wednesday, January 28. The second, in Queensway Methodist Church, is from 12pm - 5pm on Saturday, January 31.

Play Area Elmswell Gate

Report from Paul Van Geete at MKCC. *Just wanted to let you know that we have received permission to appoint PVR Contracting to deliver the park and play area at Elmswell Gate (in the fields just to the north of the Stables).*

I don't have a detailed programme from them as yet but as soon as we do, I will share this. Needless to say, we are keen for them to progress this as quickly as possible and will do what we can to facilitate this.

As soon as we do get underway, we will probably close the Planning Enforcement case which was opened on the grounds of non-delivery of these facilities by a local resident or residents.



Allotments

Regarding allotments MKCC is looking after Glebe Farm and the smaller of the Eagle Farm sites for the winter but stand ready to proceed with the transfer whenever the Parish feels ready. The remaining Eagle Farm allotments are in a poor condition and require work before MKCC can consider passing these on to Wavendon Parish Council. MKCC is discussing with David Wilson Homes but either they, or MKCC, will need to get these in better shape over the Spring/Summer to make them fit for purpose.

Temporary Building at Glebe Farm School

On the potential temporary building at Glebe Farm School MKCC report that they have answers to all the technical questions now, so are pursuing a discussion internally as to the Council appetite for bringing this forward given the financial position at the city council. They will aim to do this over the next few weeks.

Development opposite Glebe Farm School

MKCC report that this is 'on the radar of Catesby but at present it's not at the top of their 'to do' list in MK'. The city council hope to see some concepts get developed over the summer which can then be looked at but as Paul Van Geete stated at the last Council meeting this needs to be a collaborative piece of work to achieve anything.

Lower End Road redways etc

On Lower End Road and the redway connections MKCC are of the opinion that some progress had been made but for the issue that was resolved it sounded like at one to replace it had been created. It appears that there have not been any further discussions on this with the relevant team since the new year and Paul Van Geete has undertaken to make some enquiries and see if there is anything further That I can report verbally on Monday. I will also ask if we are any closer to having some indicative dates for the works that Ringway (the MKCC contractors) are going to directly deliver. They were it appears deferred to the 2026/27 financial year but we would all hope some forward thinking had been done on an outline works programme.

Council Tax

The MK City Council proposes a 4.99% increase for a Band D household is an increase of £87.81 from £1,759.72 in 25/26 to £1,847.53 in 26/27

To be clear, this does not include Fire, Police or any Parish increases.

Electric fence between Bellway and land forming part of SEMK

The parish has been contacted by a local resident and dog walker whose dog ran into an electric fence installed between Bellway and land to the west of Bellway forming part of SEMK. The animal sustained injuries and was deeply distressed by the incident. As Parish Chairman I have contacted the relevant departments at MKCC including planning enforcement, rights of way and environmental health and have attempted to make contact with the landowner and/or their agents.

Bus Stops

The Parish Council wrote to MKCC following reports by residents of vandalism at one of the new bus stop on Burney Drive and to remind MKCC that some few months ago they had advised Wavendon PC that the request for a bus shelter opposite the Wavendon Arms on Newport road would be reviewed for consideration in next year's capital programme as this year's programme was already committed when the request was received. The clerk asks MKCC to confirm if this will be included. Separately, a resident has raised concerns that there are two bus stops on Burney Drive that do not have shelters. Would you confirm if there are any plans to have shelters installed in the future.



Grit Bins

During the recent cold weather residents in several of the newer parts of the parish have enquired about the need for grit bins to be installed. As colleagues may be aware MKCC no longer supplies grit bins passing that responsibility to Parishes and recommending one style of bin that has to be purchased via MKCC only.

Regarding the question of the Health and Safety responsibility during icy weather. MKCC advise that the best place to start is the Council's winter service plan which I suggest you share with residents Winter services | Milton Keynes City Council. <https://www.milton-keynes.gov.uk/highways/winter-services> This contains interactive maps that show not only which roads the council is gritting but where the nearest grit bins are for residents and how parish councils can order them. This information is helpful to residents to make decisions about movement and their safety.

The legal position on liability stems from MKCC as the highway authority. Section 41(a) of the Highways Act 1980 places a duty on a highway authority to ensure, so far as is reasonably practicable, that safe passage along a highway is not endangered by snow or ice. Key to the council carrying out this duty is its winter service plan which sets out its approach to the dangers arising from snow and ice on the highway. In addition, the highway authority will respond to evolving weather situations. Claims that the Council is liable for damage suffered on the highway due to snow and ice will be dealt with on their merits having regard to this legal duty.

Cold Weather Payments

You may get Cold Weather Payments if you're getting certain benefits or Support for Mortgage Interest. <https://www.gov.uk/cold-weather-payment/eligibility>

If you're eligible, you'll get these payments automatically. You do not need to apply, but you may need to tell Jobcentre Plus if you have a baby or if a child under 5 comes to live with you.

The payments do not affect your other benefits.

You'll get a payment if the average temperature in your area is recorded as, or forecast to be, zero degrees celsius or below over 7 consecutive days.

You'll get £25 for each 7-day period of very cold weather between 1 November 2025 and 31 March 2026.

Find out if the weather where you live means you may get a payment.

<https://coldweatherpayments.dwp.gov.uk/> ... Check a postcode in England or Wales

Note: Cold Weather Payments are different to winter fuel payments

<https://www.gov.uk/winter-fuel-payment>

Sad to report that the Woburn Emporium / Woburn Sands Garden Centre located in the parish on Newport Road is to close

The announcement from the business reads

We want to share an important update regarding the future of our garden centre.

After several years of extremely challenging trading conditions, we have made the very difficult decision to close the business.

Recent government policies have made it almost impossible for businesses to survive. This has led to sustained financial losses, reduced customer spending, rising costs and extra tax pressures meaning the business is no longer viable. This is not a decision that has been taken lightly, and it is one we make with real sadness.

The garden centre has traded since 2019, and during that time we invested significant time and financial resources in an attempt to build a successful and sustainable operation. We explored every reasonable option to stabilise the business and sought further financial support where possible. Unfortunately, despite these efforts, continuing to trade is no longer possible. We are acutely aware of the impact this will have on our team and want to sincerely thank our staff, customers, and suppliers for their support over the years. This is not the outcome we wanted, but it is the difficult reality we now face.

Our closing down sale commences Friday 9th January 2026.



E bikes

<https://www.miltonkeynes.co.uk/news/people/strict-new-rules-aim-to-prevent-abandoned-lime-scooters-and-bikes-from-cluttering-the-pathways-of-milton-keynes-5464748>

Rigid new parking rules mean Lime customers will be punished for dumping their e-scooters and bikes irresponsibly in 2026.

From this month, Lime e-bikes and e-scooters users must end their rides in special marked Mandatory Parking Zones (MPZs).

And if they don't comply, they risk a fine or a ban for improper parking.

<https://www.miltonkeynes.co.uk/news/people/strict-new-rules-aim-to-prevent-abandoned-lime-e-scooters-and-bikes-from-cluttering-the-pathways-of-milton-keynes-5464748>



Consultation on Future Fire Services

https://bucksfire.gov.uk/public-plans/on-call-improvement-programme-consultation-2025/?dm_i=7XP6,2G52U,4XMGBO,53XUR,1

A Message from the Chief Fire Officer *"At Buckinghamshire Fire & Rescue Service, our focus will always be the safety of our community. We are committed to providing an excellent, modern and agile fire and rescue service for everyone we serve. We are dedicated to having the right people, with the right skills, in the right place, at the right time to keep you safe. And together, we will continue to work to protect and safeguard people and places.*

Like many other services across the country, we are facing real challenges with our On-Call fire stations and engines.

Recruiting and keeping On-Call firefighters is harder than ever. A number of our On-Call fire engines are rarely used, and a small number have not been crewed for years. At the same time, we must make sure that we use public money wisely and adapt to new risks such as extreme weather, new housing and road developments.

This consultation sets out proposals to strengthen and modernise our On-Call service so that it remains reliable, resilient and sustainable. We want to hear your views on these proposals before the Fire Authority makes any final decisions."

Chief Fire Officer, Louise Harrison

An update from Milton Keynes City Council Customer Services

I wanted to take a moment to introduce myself and outline some of the work I have been undertaking in my role as Corporate Customer Services Manager. I have been in post since September and have spent much of that time getting to know our services, our teams, and the ways in which residents and stakeholders currently contact the Council. A key focus of my role is identifying opportunities to improve how we work, strengthen communication, and ensure we are providing the best possible experiences and outcomes for our customers.

As part of this work, I have recently made some changes within Customer Services. One of these was the closure of the Customer Services email inbox and the introduction of our Customer Contact Form, which complements the wide range of existing “Report it” forms already available across the Council. The intention behind this is to make it easier for residents to reach the right service first time, while also ensuring enquiries are captured in a consistent and manageable way.

The Customer Contact Form provides a route for customers to get in touch about anything that does not neatly fit within an existing report it forms. It allows customers to explain their enquiry in their own words and to upload photographs or documents where helpful. A small amount of information is required upfront to ensure that enquiries can be progressed efficiently and without the need for avoidable follow up.

I would also like to reassure you that telephone contact remains an important and valued way for residents to get in touch with us. We recognise that for many people, speaking to someone directly is the preferred option, particularly for more complex or urgent queries, or where digital access may be more challenging. Our Customer Services team continues to welcome contact via the telephone and remains committed to providing helpful, professional support through this channel alongside our digital options.

While these changes are designed to support more timely responses, clearer oversight, and quicker resolutions, I appreciate that any change can take a little time to embed. I am very much viewing this as a transitional period, and I am genuinely keen to hear feedback. Whether it relates specifically to the Customer Contact Form or to Customer Services more generally, your insights are welcomed and valuable. Where matters fall outside my direct ability to change, I will ensure they are shared with the appropriate service area.

Feedback already received has helped us refine and improve the Customer Contact Form, and this is something we expect to continue evolving as we learn more about how it is being used.

https://mycouncil.milton-keynes.gov.uk/service/Customer_Services_Contact_Form

I very much hope to meet some of you during 2026. I will be attending one of the in-person Parish Forums later in the year and would also be happy to attend some parish meetings if that would be helpful.

Thank you for taking the time to read this, and I look forward to working with you.

Tom Golding

Corporate Customer Services Manager

Milton Keynes City Council

Milton Keynes City Council | Civic | 1 Saxon Gate East | Milton Keynes | MK9 3EJ

www.milton-keynes.gov.uk



Local Issues

Limited number of issues to report on as the wheels haven't really started turning at any great speed since the start of the new year.

On SEMK the city councils' ambition is to issue the two Outline permissions for the 'Southside', by March, if possible, there seems to have been sufficient progress with the EWR proposals in the locality for us to be comfortable that the necessary infrastructure can be accommodated in the corridors provided in the applications, even if we don't have detailed designs.

On EWR itself there is still a degree of 'uncertainty' over the 'whole', but in relation to SEMK the city council think it is now certain (although EWR would not confirm this publicly at this time I'm sure) that there will be vehicular bridge crossings at Bow Brickhill and Woodleys Farm, and that the Woburn Sands Station will be moved within the 'Northside' of SEMK and enlarged, under the 'consolidated stations' option.

SEMK expansion area update – The Parish Council does not expect to see any Northside of the railway (the Wavendon side) applications until 2027 but that should be preceded by discussions over how the East West Rail (EWR) proposals are incorporated into a revision of the local Development Framework. For that to happen though the final EWR proposals need to be unveiled and therefore even those discussions will almost certainly be in the latter end of the current year.

East West Rail- Appreciate that none of this is exactly 'news' to colleagues or to local residents as it just confirms the direction of travel (no pun intended) but the town council is hoping that EWR will share their proposals reasonably soon, as part of what EWR describe as the 'meaningful engagement' that is going to replace the statutory consultation. Town Councillors are meeting with a Senior Director of the EWR Consortium (Dave Bray) in early February. Now that the government's Planning and Infrastructure Bill has become the Act the town council expect EWR to move forward quickly with these engagements and correspondence from January suggest that is going to be the case, although the restriction of the discussion around the Marston Vale Line Bletchley to Bedford section is slightly disappointing. It does probably though just reflect the fact that we know what we, as a town council, have to do here moving forward.

A new report published on 7 January claims that Stevenage and Milton Keynes' growth now rivals Oxford and Cambridge, as multi-national tech and pharma firms call for Chancellor Rachel Reeves to accelerate growth across the "supercluster" <https://www.supercluster.org.uk/stevenage-and-milton-keynes-rival-oxford>

SEMK Stakeholder Group - Regarding the South Esat Stakeholder Group meetings the last meeting was not much more than a 'keep in touch' and I would hope we would want the next one to be a bit more substantive so getting the timing of that right will probably depend on a number of the factors above, few of which are under the control of the town council.

H10 Extension (Bletcham way) The H10 extension from Wavendon Gate into Church Farm and then towards a junction (eventually – several years in the future) with Newport Road is slowly getting underway on the preliminaries. MK City Council report to the town council as follows



H10 Project Overview

The project is being delivered in two Phases:

Phase 1 – Temporary Access Road

This was completed in April 2024.

MKCC installed 15 new trees and carried out major ditch clearance works earlier this year.

Phase 2 – Main Construction

This will involve building the main eastern extension of H10 Bletcham Way, along with associated works.

Advance Works (January – April 2026)

These will be carried out by our Highways Service Provider, Ringway, and include:

- Site clearance (trees and vegetation) in Byrd Crescent and nearby land
- Diversion of Anglian Water pipes and electrical cables
- Diversion of overhead high-voltage cables and a section of foul water sewer in Gregories Drive (planned around Easter holidays to minimise disruption)
- The footway on the west side of Byrd Crescent will be closed for a short period of time. The Redway will remain open throughout the works. We may need to close Bryd Crescent for a short on safety grounds, access to local properties will be maintained.

Main Works (Starting Summer 2026 – approx. 18 months)

Scope includes:

- Construction of the H10 road extension
- Enlarged roundabout at Britten Grove / Gregories Drive
- New bridge over Byrd Crescent
- Landscaping and tree replacement
- Noise bunds
- New Pegasus crossing
- Two attenuation ponds
- Extension of Redways and footways
- Service diversions
- Temporary car park for residents during road closures

MKCC will maintain local access to all properties and provide safe pedestrian routes throughout. Full project details and drawings can be viewed at www.milton-keynes.gov.uk/highways under 'Major Projects'

MKCC claims it is working hard to minimise disruption, but as with any large-scale project, some inconvenience will be unavoidable. They thank residents for their patience and understanding and undertake to keep the town council updated and share details of road closures and diversions closer to the start date.

HAVE YOUR SAY



Thames Valley Police Have your Say meeting

Ove 20 residents attended the *Have your say* meeting with TVP held on 7 January at the Wavendon Hub.

Officers reported that 132 crimes were reported in the Danesborough & Walton ward in November 2025

Crime type	Instances
Violence and sexual offences	54
Anti-social behaviour	26
Vehicle crime	11
All other crime	41

Among the issues raised were

- The status of the proliferation of barber shops following newspaper comments on this national issue
- The need for foot patrols outside local schools at picking up times in particular
- Begging at the local Walnut Tree retail area
- Alleged drug dealing at the same centre
- Use of illegal e-scooters
- Concerns over alleged drug dealing and drug use in parts of Woburn Sands including Russell Street, Club Lane and the Recreation Ground
- Magna Park HGV's (having been ticketed for long stay parking on the industrial estate) using surrounding areas for parking. Note: WSTC has submitted comments to the Reg 19 stage of the local plan consultation regarding the need for an HGV lorry park to be included in the MK2050 local plan given the focus on warehousing/logistics across MK in that plan.
- Chromium Racing in Central MK (by Network Rail HQ) spilling out onto city and rural roads
- Speeding along all stretches of Burney Drive, Glebe Farm and Eagle Farm South
- Offer from TVP to attend and support Speed Watch Groups when they are undertaking their community speed watch operations
- The speed camera on Station Road (Woburn Sands) is in operation.
- TYP to prepare an article for the Town Council magazine and Hog Sty End regarding the use of e-scooters
- MK City Council now has responsibly for the installation of e-scooter use signs across MK
- Concerns over speeding on Theydon Avenue and the Woburn Sands High Street



E Bikes and Scooters

Lime and Dott have each taken a half of the city, with the remit of discussing the new parking model with Parish Councils in each. Wavendon is one of Dott's and Cllr Penfound found is leading on this issue.

It is planned to meet with Tom from Lime bikes (Tom Newham tom.newham@li.me) and at the time of writing this report the parish clerk was still waiting to hear back from Dott. Del O'Sullivan del.osullivan@ridedott.com

Wavendon (Proposed) Youth Club Tender

The tender was forwarded to a dozen local providers of youth services (recommended by MK City Council Youth Services Team) and a report on the responses will be considered at the February Meeting.

Community Library Boxes



Colleagues may be interested to learn that two Library boxes have been ordered with Men in Sheds for installation in Woburn Sands. Our local Librarian, Nicky Slater has welcomed the initiative and is helping by advising the Woburn Sands Town Council on the best locations.



New Local Plan – MK2050 (Reg 19 Consultation

Extended)

Milton Keynes City Council (MKCC) has experienced a delay in its MK City Plan 2050 Regulation 19 consultation due to a technical issue with email notifications, leading to a reopening and extension of the consultation from January 5 to February 16, 2026, to ensure fairness, though the intended submission date to the Planning Inspectorate in March 2026 remained the goal. This formal stage gathers feedback on the plan's soundness before independent examination, with the plan guiding development to 2050.

What happened (The Delay):

Technical Issue: An error prevented some residents from receiving the initial notification email for the Regulation 19 consultation, which ran from November/December 2025.

Extension: To allow everyone 'a fair chance', the consultation was re-opened from January 5 to February 16, 2026, for an additional six weeks.

What is Regulation 19?

This is a formal stage where MKCC seeks feedback on the final draft of the MK City Plan 2050, checking if it's "sound" and legally compliant.

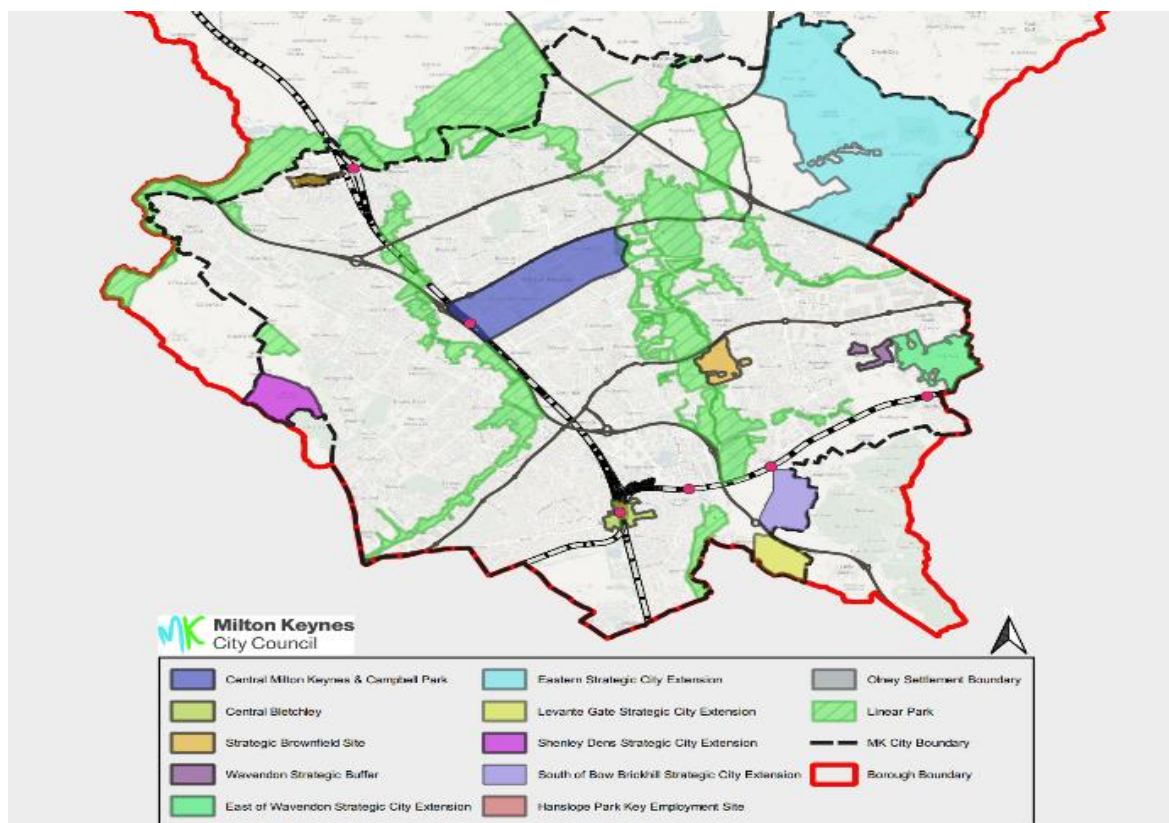
It's the last chance for public comment before the plan is submitted to the Secretary of State for independent examination by a Planning Inspector.

What's Next?

After the extended consultation (February 2026), MKCC plans to submit the plan, supporting documents, and all feedback to the Planning Inspectorate.

An independent Inspector will then hold an Examination in Public (EiP) to determine if the plan is sound and can be adopted.

Where to Find More Info: <https://www.milton-keynes.gov.uk/planning-and-building/planning-policy/mk-city-plan-2050/mk-city-plan-2050>



Community market councillors' surgery - (14 February)

I know that many Wavendon residents attend the monthly market in Woburn Sands



Saturday 14th February
10.00AM - 11.00AM

**Woburn Sands Library,
The Institute, High Street, Woburn Sands**

Come and say 'Hello!'

**Come along for a friendly chat with your Town
Mayor and Town Council Representatives**

- **Discuss local matters**
- **Pose your questions**
- **Share your ideas and suggestions**

No appointment necessary - just drop in!



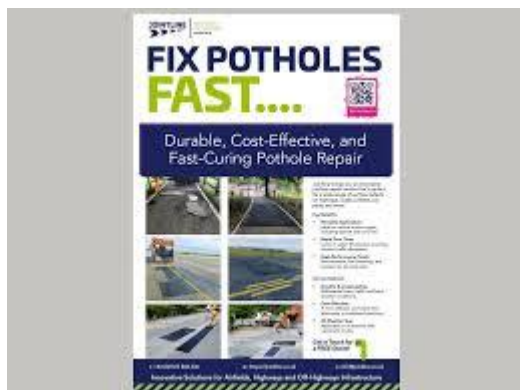
**Town Mayor
Cllr David Hopkins**



MKCC Winter Services <https://www.milton-keynes.gov.uk/highways/winter-services>

Given the recent challenging cold weather, the town council has been asked a number of questions by residents about council winter services. MK City Council produce an advisory booklet on the 'winter services' it provides, and a copy is circulated to town council members with this report for information.

- Gritting and ploughing
- Salt bins
- Priority routes
- How rock salt works
- Safe driving in winter
- Self help
- Frequently asked questions



Road Works and Repairs

Recent issues have included

- MK City Council has 13 open enquiries for the Wavendon and Woburn Sands area, six of these already have a job raised with the remaining ones being investigated or inspected.
- MK City Council has completed putting the surfacing plans together for 26/27 which will be circulated in early 2026. This will be the approved list of surfacing sites for roads, redways and footways.

Any sites for 25/26 are on the MKLCC website already at Managing our assets | Milton Keynes City Council <https://www.milton-keynes.gov.uk/highways/our-policies-and-processes/managing-our-assets>

MK City Council maintains that it continues to repair any safety defects and as winter conditions can make minor defects worse, any potholes should still be reported to them so that the city council highways team and its contractors can inspect them. <https://www.milton-keynes.gov.uk/pay-report-and-apply/report-it>

- Any resurfacing work planned for 26/27 is being finalised now with its contractors Ringway. Once the final plans are agreed, I'll publish the list to all town councillors, and it will also go on the town council website and will appear in a future Chairmans report. This includes footway, redway and carriageway.
- There will also be a 26/27 programme published for other highways planned works too at the same time which will include areas like road safety schemes, drainage and any signage.
- MK City Council do also have some patching works (Elastomac) taking place between now and the end of March however this draft list is likely to change as winter conditions can make defects worsen and so some sites may become more urgent.

Listed below are the works coming up in these areas over the next few days; any approved permits for works will be available to view on One.Network:

- BT laying duct and clearing blockages for fibre last week and this: Newport Road, Deethe Close, Cranfield Road, Station Road
- Gregories Drive, Wavendon Gate closed for defects until 27 Feb
- Electric reinforcements in Caldecotte started last week and will last until 16 Jan: Monellan Grove, Heybridge Crescent, Walton Road and Caldecotte Lane.
- M1 shut on night of 22 and 23 Jan.

These are the only Open enquiries MKCC has for Wavendon/ Woburn Sands area and with the exception of the Loose Drain Cover, which is being inspected again, they all either have a Job Raised or More Works are Required.

TRAFFIC LIGHTS	Newport Road
Potholes	TAVISTOCK CLOSE
Potholes	THEYDON AVENUE
Lamp Out	STATION ROAD - 15SR
Lamp Out	VICARAGE STREET - 1VS
Lamp Out	HARDWICK ROAD - 8HR
Pothole on Footway	NEWPORT ROAD
Loose Drain Cover	STATION ROAD
Lamp Out	F2 WB - F2 3 WB
TRAFFIC SIGN DAMAGED	Gully - Pass on left side
Lamp Dim / Glows	RIDGWAY - 2RW

For interest, highways and related reported matters in the remainder of the Danesborough & Walton ward

For the Bow Brickhill area MKCC has two open jobs which are for a pothole on Brickhill Road and damaged/missing sign on Woburn Sands Road. These also have Jobs Raised although they are seen as Low Priority.

For Wavendon area, MKCC has six additional open enquiries covering a pothole, damaged sign (by vehicle), damaged bollard/kerb and lamp out. These are on Lower End Road, Newport Road, Cranfield Road and Stockwell Lane. All are either being investigated by inspectors or already have jobs raised.

There are three additional open enquiries for Eagle Farm (Wavendon) for the same streetlights, and a repair is already raised for these.

There are seven in Glebe Farm (Wavendon) as open Enquiries for a section of redway lights and there is already a job raised to repair these.

Nothing open for Little Brickhill.



MK City Council Transport Strategy

The LTP5 consultation is now live on the Commonplace website here

<https://mktransportconversation.commonplace.is/en-GB/proposals/v3/the-local-transport-plan?step=step1>

Have Your Say Today - The Local Transport Plan - MK Transport Conversation

The full LTP document is not uploaded yet, as some additional illustrations and photos the Head of Transport selected over the holidays are still being added and some final adjustments to formatting are being made, but this will be available on the Commonplace consultation site before the launch email is sent.

Residents can either respond by answering the questions and providing free text responses where suggested via the website, or email us with your response to: transport.policy@milton-keynes.gov.uk

MK City Council formally commenced the consultation on Monday 12th January, with a closing date of 12th April for comments. MKCC will prepare a consultation report thereafter for the new administration to consider in May, with a view to the formal adoption of the document as Council policy in the early summer.



Alzheimer Society - The clerk and I are meeting with Annlouise Taylor - Communities and Volunteering Officer (Milton Keynes and Bedfordshire) Alzheimer Society on Feb 5th to review signage etc within our community owned buildings. This to ensure we are doing all we can to make them dementia / Alzheimer 'friendly'.



Cold Weather Payments

<https://www.gov.uk/cold-weather-payment>

You may get Cold Weather Payments if you're getting certain benefits or Support for Mortgage Interest.

If you're eligible, you'll get these payments automatically. You do not need to apply, but you may need to tell Jobcentre Plus if you have a baby or if a child under 5 comes to live with you.

The payments do not affect your other benefits.

You'll get a payment if the average temperature in your area is recorded as, or forecast to be, zero degrees Celsius or below over 7 consecutive days.

You'll get £25 for each 7-day period of very cold weather between 1 November 2025 and 31 March 2026.

Find out if the weather where you live means you may get a payment.

Check a postcode in England or Wales. <https://coldweatherpayments.dwp.gov.uk/>

Note: Cold Weather Payments are different to Winter Fuel Payments.

NEWS REPORT

Amazon has announced plans to close its first UK centre which it opened in 1998.



The online retail company said it had started a consultation to shut its fulfilment centre at Marston Gate, Ridgmont, Brogborough, Bedfordshire, by junction 13 of the M1.

Staff would be moved to other sites or a new £500m facility being built in Northampton that would be open in May, it added.

The company said its "top priority is to support our people during this process".

It currently employs about 590 people at the warehouse and said it was "listening to everyone's views".

The company said the decision was taken to possibly close its Bedfordshire site, called Milton Keynes (Marston Gate), as it was "always evaluating our network to make sure it fits our business needs and to improve the experience for our employees and customers".

Amazon confirmed its sortation centre, in Magna Park (Wavendon Parish) - which employs 1,100 staff - would not be affected

The US-based business said it was "investing £40bn in the UK" between 2025 and 2027, which included four new fulfilment centres and other new delivery stations.

Amazon said when it opens the new Northampton building - near junction 15 of the M1 - it will employ about 1,400 people, with that number set to rise to 2,000

The US-based business said it was "investing £40bn in the UK" between 2025 and 2027, which included four new fulfilment centres and other new delivery stations.

Amazon said when it opens the new Northampton building - near junction 15 of the M1 - it will employ about 1,400 people, with that number set to rise to 2,000.

LICENSING ACT 2003

Co Op, Glebe Farm Local Centre, Unit 1 Payne Road, Wavendon, Milton Keynes, MK17 8EX
Premises Variation application

The above application for a licensed premises has been received by Milton Keynes Council as the Licensing Authority on 16/01/2026. Brief details of the application are as follows:

Variation Details

For the following Licensable activities:

Supply of alcohol (off sales) + Opening times varied to:
06:00 to 23:00 daily

Cllr David Hopkins

January 2026

Chairman of Wavendon Parish Council 2025/26