

## Unitary Councillor Report

### (Snippets) Report from Cllr David Hopkins, Cllr Victoria Hopkins & Cllr Alice Jenkins – Representing Wavendon at MK Council

April 2019

**We need 300,000 new homes every year – where are the entrepreneurs to build them, asks Liam Kelly**

It has been three years since Katy Jordan's planning nightmare began. Jordan, who runs a small housebuilder called Storey Homes, bought a plot of land with the hope of building 203 houses and flats on it. She applied for planning permission in April 2016. Although the scheme in Woburn Sands, a small town near Milton Keynes, was recommended for approval by council officials, it was rejected by the elected councillors on the planning committee.

When Jordan appealed, the local Conservative MP, Iain Stewart, wrote to the then housing secretary, Sajid Javid, asking him to intervene and block the scheme. After a planning inspector said Storey Homes should be granted permission, James Brokenshire, Javid's successor, scuppered the proposal.

Jordan suspects political considerations are at play in the tight Tory marginal seat. She refuses to give up, and the case will go to judicial review next month.

"It's appalling. It's interference at the highest level," said Jordan. "How can a small business make plans when we don't get the planning permission despite the application being policy-compliant and having the support of the people making those decisions?"

She estimates the saga has cost Storey, which builds 75 homes a year and turns over about £15m, at least £500,000. "We could have spent that to grow and develop. That doesn't even bring into play the cost of lost opportunities," she said.

While Jordan's story is an extreme example – the housing secretary became involved in only 26 of the 454,000 applications last year – small housebuilders everywhere bemoan the time and cost of going through the planning system, as well as problems accessing bank finance.

In 1987, small and medium-sized housebuilders were the backbone of a building boom, accounting for 71% of housing starts. By 2017, that proportion had shrunk to just 37%. The number of housebuilders classified as small and medium-sized enterprises fell from a high of 12,490 in 1988 to 1,839 in 2017. The financial crisis wiped out thousands, and many have not returned.

While a net 192,000 homes were built last year, most were produced by large listed builders such as Taylor Wimpey or Persimmon, while an extra 30,000 were added to housing stock via conversions.

In the 2017 budget, the government raised its housebuilding target for England by one-fifth to 300,000 a year, although that is more than has been built in any year since the 1960s and the previous target of 250,000 had never been met. If it is to reach 300,000 a year, smaller housebuilders need to produce far more – and need far fewer obstacles in their way.



Katy Jordan, who runs small housebuilder Storey Homes in Milton Keynes, has spent three years struggling to get the green light for a 203-unit scheme

The Council has received a claim form on behalf of Wavendon Properties Limited for judicial review against the Secretary of State for Housing, Communities and Local Government dated 15 January 2019.

As an interested party, the Council has been added as a Second Defendant in these proceedings.

The Claimant is seeking for the Secretary of State's decision letter dated 5 December 2018 to be quashed and the matter to be remitted to the Secretary of State for redetermination.

However, if the claim is unsuccessful, the Secretary of State's decision letter dated 5 December 2018 refusing planning permission will stand.

The matter has been listed in the High Court on 7 and 9 May and there will be a High Court hearing.

Please let me know if you would like more information.

Egle Gineikiene - Senior Solicitor – Planning & Highways (Legal and Democratic Services)

T: 01908 252068 - E: [Egle.Gineikiene@milton-keynes.gov.uk](mailto:Egle.Gineikiene@milton-keynes.gov.uk)

-----



#### **Stables - Planning Development Update: 05/04/19**

Following last night's meeting of Milton Keynes Council's Planning Control Committee, The Stables has issued the following statement today:

"The Stables Theatre is very grateful to the members of Milton Keynes Council who voted unanimously last night to secure its future by imposing a condition on the Reserved Matters planning application by Abbey Homes that the developer enter into a Deed of Easement.

The Deed of Easement will provide The Stables with the legal right to continue to make noise at the existing levels and will ensure that all future residents of the development are legally bound by this right.

The Development Control Committee expressed their concern that despite welcome noise mitigating measures agreed by the developer, there remained a significant risk that a future resident would complain about noise from The Stables. For that reason, Members decided that additional protection was necessary for planning reasons.

The deed doesn't protect The Stables against statutory noise nuisance complaints but the Stables has always sought to avoid committing a statutory nuisance in any event. Instead, the deed will provide a line of defence from private nuisance complaints that could result in claims for damages or restrictions that could ultimately lead to the venue having to curb its activities.

Monica Ferguson, Chief Executive & Artistic Director of The Stables was delighted with the outcome saying "This marks a real turning point for us in our campaign to secure the future of The Stables as we head towards our 50th anniversary in 2020. We are particularly grateful for the support of the public, artists, staff and volunteers who have campaigned to safeguard the venue's future."

---

The legal arguments were set out by Tim Taylor of Foot Anstey who secured the Deed of Easements for The Ministry of Sound and The George Tavern in London. Tim will now work with Milton Keynes Council and the developers to agree the terms of the Deed of Easement with The Stables.

Tim said: “this is a forward-looking decision by the Members of the MK Planning Committee. By requiring the deed of easement as a condition of the development proceeding, Members have helped to secure the future of this fantastic venue while also helping the delivery of much-needed new housing.”

Jim Rice, Chair of Trustees, said: “this is a great decision for The Stables and, I hope, for the UK's live music industry generally.”

**South Caldecotte** - Plan:MK allocates land on the south-eastern edge of Milton Keynes for a strategic employment site, providing a minimum of 195,000 sq m of B2/B8 employment space. The Draft South Caldecotte Development Framework has been prepared to ensure that the land allocation is brought forward in a strategic and comprehensive manner.

Draft South Caldecotte Development Framework – Decision of Delegated	That the draft Development Framework Supplementary Planning Document be approved for an 8 week formal consultation period. Councillor Legg (Cabinet member for Customer Services) Report, Annexes and representations from Councillors D Hopkins and Jenkins and 2 members of the public and that the Development Framework Supplementary Planning Document be considered by the Cabinet after 1 July 2019 at the earliest.
--	--







I'm hoping that we'll have the briefing sessions arranged for that time when I return and certainly look forward to working with you and colleagues at Wavendon. I've recently spoken to them about the use of SIDs, etc so look forward to sharing the information on the Community Speedwatch scheme upon my return.

David Frost - Road Safety Officer  
Direct: +44 (0)1908 252572

Switchboard: +44 (0)1908 691691

Email : [david.frost@milton-keynes.gov.uk](mailto:david.frost@milton-keynes.gov.uk)

Visit Online : <https://www.mkhighways.co.uk/>



**Lower End Road Redway**

I have been passed your information request below,

I will speak to the developer L&Q / Gallagher Estates to open up the redway on Lower End Road at the Glebe Farm Development. A request was sent to them a while back but I will chase them up.

I will request that the redway will be opened through the development so that there is pedestrian access to the redway on the A421 which gives access to the development at Eagle Farm South.

Jonjo McBride - Highway Adoption Engineer

T: 01908 252362

E: [Jonjo.McBride@milton-keynes.gov.uk](mailto:Jonjo.McBride@milton-keynes.gov.uk) - <http://www.milton-keynes.gov.uk/>

Milton Keynes Council | Public Realm Services Group | Synergy Park | Chesney Wold | Milton Keynes | MK6 1LY



MK council has appealed to its residents to help dig it out of a hole that could continue to cost hundreds of thousands of pounds more after an historic blunder in its recycling contract. At meetings held behind closed doors last week Milton Keynes Council and contractor Viridor agreed to a £1.75m legal settlement to cover the costs of the wrong kind of rubbish in recycling sacks from 2013 to 2019. Windows at MK Council's offices get across the recycling message It had been feared that the settlement could have blown a £3million hole in the council's already tight budgets.

The council says this figure has been negotiated down, but it is still liable for 'hundreds of thousands of pounds' in penalty fees every year. The council's waste contracts end in 2023, after being signed in 2009. Initial estimates that only 10 per cent of rubbish placed in the recycling sacks would be wrong proved to be wildly inaccurate. Residents have been placing so many tons of used nappies, and crisp packets in their clear sacks that one in every four of them has been rendered unusable. Milton Keynes's recycling is processed by a mixture of mechanical and human hand methods by Viridor staff at the Materials Recovery Facility, in Wolverton. Any materials that can be reused are recovered and sold. At the same time as seeing high levels of contamination, the market for recycled materials has dropped. In a statement, Milton Keynes Council said: "Around one in four sacks in MK are contaminated by dirty nappies, pet waste, and food so materials can't be recovered, undermining recycling efforts. This is higher than the tolerance for contamination built into the recycling contract." "If contamination levels continue at their current levels, it will cost MK hundreds of thousands of pounds every year in penalty fees."

The council has appealed to residents to "take more care about what they put in recycling sacks to avoid unnecessary future costs" and they will be looking at ways to get that message out more effectively. Cllr Ric Brackenbury, who chairs the council's scrutiny management committee, said: "The council was asleep for too long on rising contamination levels in recycling. There's a big job to do to make sure we keep recycling but only put the right items in our recycling sacks." People can find out what can and can't be recycled at [www.milton-keynes.gov.uk/waste-recycling](http://www.milton-keynes.gov.uk/waste-recycling)

---



## **MK Council to share £150,000 with volunteer and community groups**

Milton Keynes Council has created a new fund, the MK 2050 Community Capacity Fund, to support the important work made by voluntary and community groups in Milton Keynes.

£150,000 will be allocated for the fund's first year, and £50,000 for each year to follow. The Milton Keynes Community Foundation will be responsible for sharing the money with voluntary and community groups.

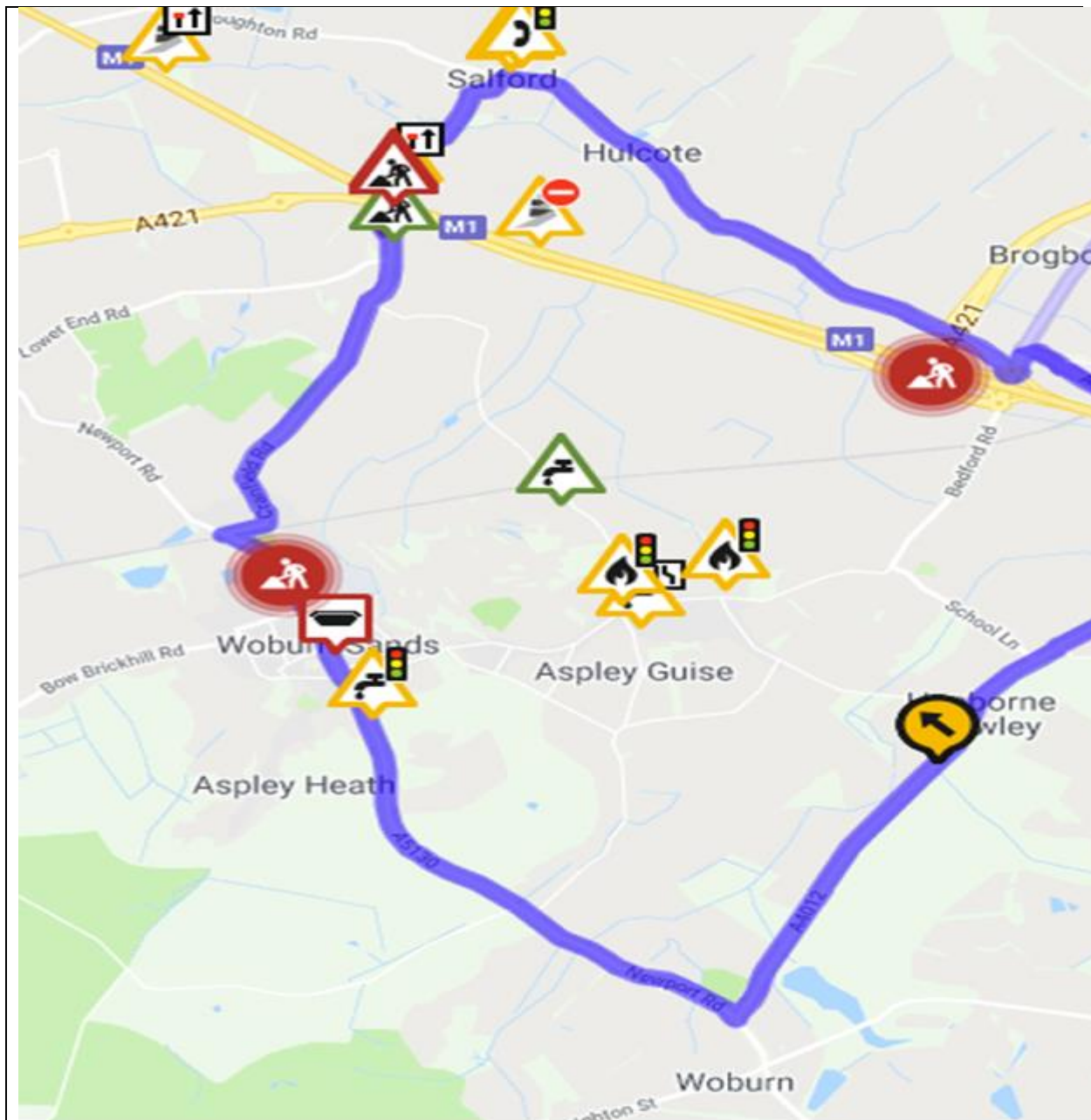
Milton Keynes Council already supports a number of voluntary and community groups through a mixture of one-off funding for specific events, ongoing support, and special funding for groups at risk of closure. The MK 2050 Community Capacity Fund will aim to bring funding into one stream so every application can be considered using the same criteria.

Groups can to apply from May 2019, and the fund will particularly look to support groups that fit with the Council's Health and Wellbeing Strategy, and that promote accessibility and reduce exclusion.

Cllr Moriah Priestly, Cabinet Member for Economic Development and Community Partnerships said: "Despite the financial challenges faced by the council, we have a strong commitment to supporting our amazing local voluntary and community sector. There's some fantastic work done at a grassroots level, and we want to help groups flourish. For many this means using practical council support as they rewire their own funding models, becoming more resilient and sustainable."

Ian Revell, CEO of MK Community Foundation said: "We are really pleased to be working in partnership with MK Council to secure this funding for the sector. The new fund will support the many small community organisations that deliver fantastic weekly clubs and activities to thousands of people each year. It was great to have worked closely with the Scouts and Girl Guides and many other community groups to agree the scope of this fund. Great partnership working!"

---



#### **Cranfield Road, Wavendon (Road Closure)**

Please note that the above road will be closed from 13th May 2019 for a year. This is to enable the bridge to be taken down and reconstructed due to the dual carriageway works of the A421. Diversion map above.

Olivia Bessenay - Streetworks Coordinator- Highways

Central Bedfordshire Council Priory House, Monks Walk, Chicksands, Shefford, Bedfordshire, SG17 5TQ

Direct Dial: 0300 300 5718 | Internal:75718 | Email:

[olivia.bessenay@centralbedfordshire.gov.uk](mailto:olivia.bessenay@centralbedfordshire.gov.uk)

**The Oxford-Cambridge Arc (Chancellors Spring****Statement)****Government ambition and joint declaration between Government and local partners**

The Oxford-Cambridge Arc: government ambition and joint declaration between government and local partners The document (attached) provides an update on government's overarching ambition for the Arc, including a joint declaration between government and local partners, signalling the importance of collaboration to achieve these aims. The document also provides an early update on the government's work to develop a robust economic evidence base for the Arc.

**Council adopts Plan:MK**

Plan:MK - the local plan setting out how MK will grow until 2031 – was adopted at Full Council on Wednesday 20 March and will now form part of our formal Development Plan. It details the anticipated growth of MK over the coming years and determines how many homes, jobs, and the kind of infrastructure we'll need leading to 2031. The population of MK is expected to rise to more than 300,000 between now and then with 31,000 new homes needed to meet demand - of which almost 20,000 are already in the planning pipeline.

**MK commemorates**

A vigil was held at the Milton Keynes Rose in Campbell Park to commemorate the victims of the New Zealand mosque attacks. The event, which was organised by the MK Muslim Community, was attended by Mayor Martin Petchey and past Mayor Cllr David Hopkins as well as other local dignitaries.





## **Plan:MK given the green light by Inspector (MK**

### **Council News Release)**

Green space, original MK design principles, and affordable homes underpin next chapter in MK's growth.

Plan:MK, the local plan setting out how Milton Keynes will grow until 2031, has been found 'sound' by a government Inspector; a crucial milestone before the plan can be adopted.

Plan:MK shows how the borough will grow over the next few years and is how the council determines how many homes and jobs, and what kind of infrastructure is needed to 2031. By then, the population of MK is expected to rise to more than 300,000, with 31,000 new homes in Plan:MK to meet this demand - of which almost 20,000 are already in the planning pipeline.

Plan:MK sets out a vision for MK as a green and spacious place with a thriving economy and new facilities including a state-of-the-art university in the city centre.

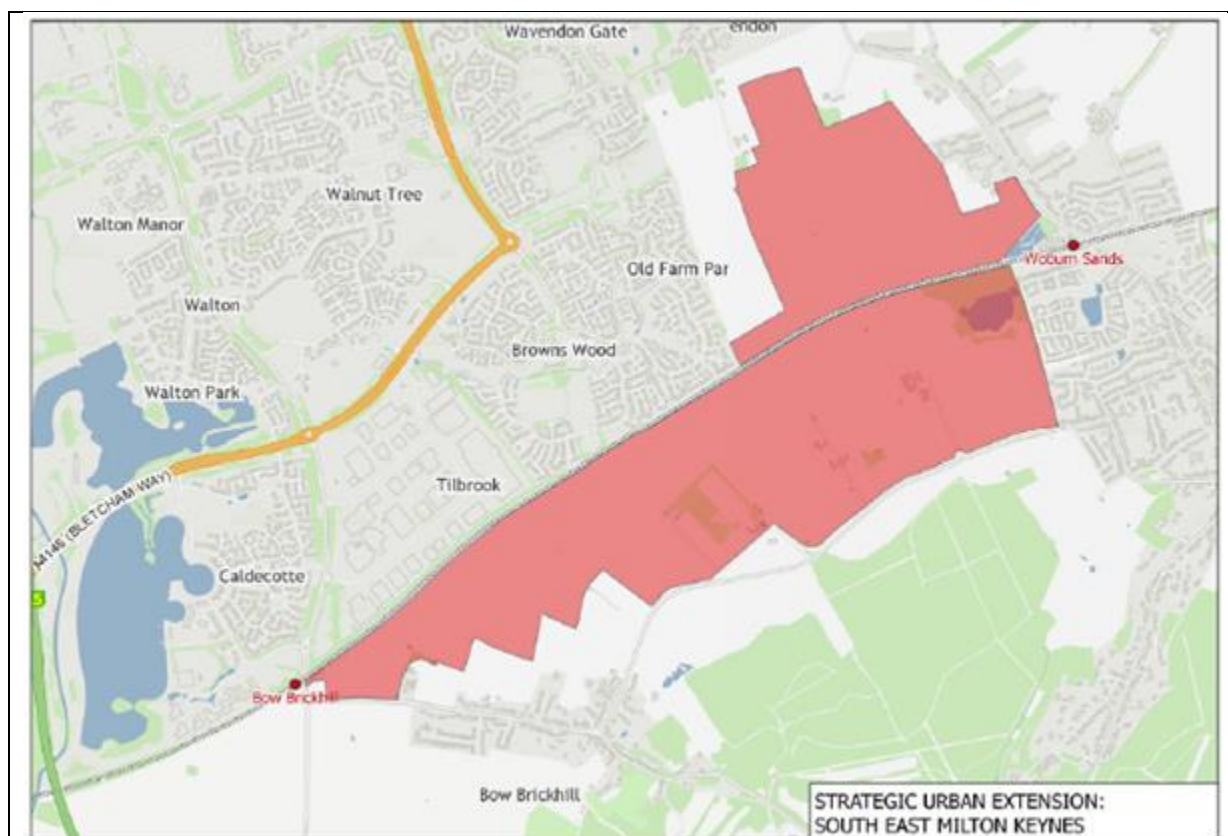
In preparing Plan:MK, the Council has gathered ideas and comments from residents and local groups as well as independent evidence about future population growth, job creation, retail, green infrastructure and other important issues. A public examination was held during 2018, with hearings before an Inspector in the summer of 2018.

This month MK Council's Cabinet will receive a recommendation to adopt Plan:MK as part of MK's formal Development Plan which will shape the outcome of future planning applications. Plan:MK sets out important conditions for new development which include:

- Development should be based on the original principles of Milton Keynes, to keep what makes MK distinct and special.
- Green space must be protected - and residents of new housing should have the same access to open space and parkland as current communities.
- Development that makes the most of the East-West Growth Corridor and national infrastructure projects – which will create more investment and high quality jobs in MK.
- 31% of homes to be as affordable homes, with new high-quality and sustainable homes, good schools, and the utilities people need (including high speed broadband).

Council Leader Cllr Pete Marland said: "Planning for the future is essential to get the right balance of housing and other development. We want everyone in MK to have a good home at a price they can afford, a decent job and a long and healthy life. We also want to keep what makes MK special - our green open spaces, unique design and the right infrastructure such as schools and health services. Plan:MK will help map out the growth we need.

"Our thanks go to everyone who gave their feedback as the plan was developed. You've helped shape how Milton Keynes will develop and thrive."



South East Milton Keynes Strategic Urban Extension (or SEMK) is a draft allocation within Plan:MK, covering an area of land approximately 210 hectares in size encompassed by Tilbrook, Browns Wood and Wavendon to the North, Woburn Sands to the East, the Green Sands Ridge to the south, and Bow Brickhill to the west.

The draft allocation within Plan:MK, under Policy SD13, allocates the land for around 3,000 homes, 7 Gypsy and Traveller pitches, and a range of social and green infrastructure provision.

Contact: Andrew Turner - Senior Planning Officer | Development Plans (T: 01908 254892)

M: 07775 110432 - E: [andrew.turner@milton-keynes.gov.uk](mailto:andrew.turner@milton-keynes.gov.uk)

W: <https://www.milton-keynes.gov.uk/planning-and-building/>

See form attached to this report	
Heritage Open Days	<p>From: Mel Jeavons [<a href="mailto:Mel@livingarchive.org.uk">mailto:Mel@livingarchive.org.uk</a>]  Sent: 20 March 2019 12:02  To: Mel Jeavons  Cc: Rachel; <a href="mailto:shane.downer@milton-keynes.gov.uk">shane.downer@milton-keynes.gov.uk</a>  Subject: Herfitage Open Days 2019</p>

	<p>Hello all</p> <p>Thank you for attending our Heritage Open Days lunch yesterday. It was great to see so many people there. If you weren't able to attend there is information below.</p> <p>We're really looking forward to receiving details of your events and your registration form is attached. The sooner we receive the information, the sooner we can start promoting your events!</p> <p>Key Dates</p> <p>18 March - Registration opens</p> <p>31 May - Deadline for copy for inclusion in the printed brochure</p> <p>13 – 22 September - Heritage Open Days</p> <p>Key Information</p> <p>This year Heritage Open Days will run over 10 consecutive days. The theme will be People Power, a celebration of the ways that people across time have taken action to change our world. More info here - <a href="https://www.heritageopendays.org.uk/news-desk/news/people-power-then-now-always">https://www.heritageopendays.org.uk/news-desk/news/people-power-then-now-always</a></p> <p>All events need to be free for the public to attend. Small grants may be available to support your event if you're a member of MKHA. There are also other funders who may be able to help. Please get in touch with us for further info.</p> <p>There are other ways to recoup money by having donation buckets, selling merchandise, and tea and cakes.</p> <p>In terms of marketing we'll be planning a social media campaign, getting details out to parish newsletters, printed press, TV and radio.</p> <p>For some of you it may be easier to plan for numbers if you ask people to book in advance by using Eventbrite. If you need assistance setting this up please let us know.</p> <p>If you're not planning an event this year let us know, and we'll take you off this mailing list.</p> <p>If you require any further information or help with your plans please get in touch.</p> <p>Melanie Jeavons - General Manager (Living Archive MK)</p> <p><a href="http://www.livingarchive.org.uk/">http://www.livingarchive.org.uk/</a></p> <p>01908 322568</p> <p>Living Archive are proud to co-ordinate Heritage Open Days</p> <p>If you'd like to help support the work of Living Archive you can make a donation via the link below:</p> <p><a href="https://localgiving.org/charity/livingarchive/">https://localgiving.org/charity/livingarchive/</a></p>
--	--

	<p>Follow us on Twitter: @livingarchive1</p> <p>Facebook: <a href="https://www.facebook.com/living.archive.7/">https://www.facebook.com/living.archive.7/</a></p> <p>Sign up to our newsletter - <a href="http://www.livingarchive.org.uk/content/get-involved/subscribe">http://www.livingarchive.org.uk/content/get-involved/subscribe</a></p> <p>Milton Keynes Museum Mc Connell Drive Wolverton MK12 5RL</p>
--	--

## PLANNING



Three-quarters of residents in the proposed "Oxford-Cambridge Arc" fear the development will harm the local countryside, a survey suggests.

Proposals have been unveiled for one million homes by 2050 along with rail and road links between the two university cities in an arc through Oxfordshire, Buckinghamshire, Northamptonshire, Bedfordshire and Cambridgeshire.

But the Campaign to Protect Rural England (CPRE) claims building a million new homes in the region would swallow up an area of countryside the size of Birmingham and the project has not been properly assessed or consulted on.

A poll of more than 1,500 residents in the affected counties by Survation for the CPRE found 74% thought the development would lead to damage to the area's countryside and natural environment.

While more than half said they agreed that a million new homes will be necessary for a growing population and would contribute to economic growth, 59% did not support the scale of house-building proposed in the arc.

Protecting and improving the natural environment including wildlife and landscape, and providing more affordable housing for poorer people topped the list of important issues that any plans for growth in the area should address.

And there was overwhelming support for any new house-building to prioritise the needs of people working locally, rather than retirees or commuters to London or elsewhere.

Paul Miner, head of strategic plans and devolution at CPRE, said:

"It is unthinkable that the Government would consider such a vast development proposal, which will have huge and damaging consequences for the countryside and environment,



without any sort of assessment of its impact. People are right to be concerned.

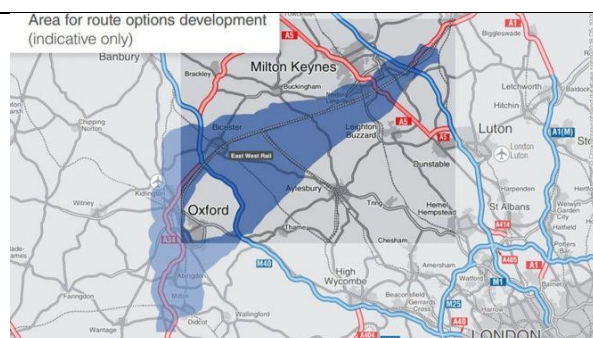
"Rather than ignoring people and the environment in a rush for economic growth, consideration of the full effects on communities and the environment must be given priority. "Before the Government takes these proposals any further, it is imperative that a strategic environmental assessment is carried out, along with a full public consultation on the proposals."

- Paul Miner

The Government said it was committed to protecting and maximising opportunities to enhance our natural environment as it worked in partnership with authorities between Oxford and Cambridge to plan much-needed, high quality homes

“Handled sensitively the Oxford Cambridge arc can be an example to the world of how to both build large numbers of homes for a generation crying out for them, while also leaving the environment in a better state than we found it. This is the challenge and I hope that everyone will join us in rising to it.”

- Minister of State for Housing Kit Malthouse MP

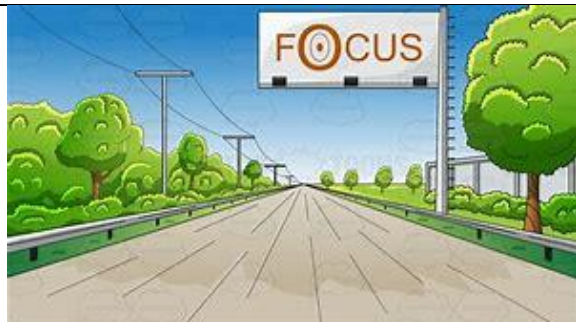


**Expressway Timeline**

Date	Event
Autumn 2017	Commitment by the Chancellor for construction to commence on the missing link before the end of the Road Investment Strategy (RIS2) in 2025
2018	Corridor announcement
Autumn 2019	Public consultation on route options*
2020	Preferred route announcement*
2025	Construction starts*

2030	New link opens to the public

\*Indicative timetable, subject to preferred route options



**East West Rail – Timeline**

### **What is being proposed?**

East West Rail Western Section will re-establish a passenger and freight railway between Oxford, Bedford, Milton Keynes, and Aylesbury. Phase 2 involves improving and reconstructing underused and disused sections of the former railway and represents a significant piece of infrastructure investment.

### **Why do we need to build this?**

This scheme will enhance the rail network, create more journey opportunities with reduced journey times and better connections to the Great Western, West Coast and Midland Main Line services, avoiding the need to travel via London. It will reconnect major centres including, Aylesbury, Milton Keynes, Bedford, Bicester, Oxford.

### **What are the main benefits?**

The East West Rail scheme will support economic growth through residential and commercial development along the line of route, boosting business growth and attracting new business and inward investment. The upgrade of the route will provide additional network capacity to accommodate growth in freight and passenger markets by connecting the Oxford to Bedford railway with the Great Western, West Coast and Midland Main Lines.

### **Who pays for it?**

The project is funded by the Department for Transport and by a £45m contribution from the East West Rail Consortium.

### **What is the new EWR Company? And what is their role in delivering the project?**

The East West Railway Company has been formed by the Secretary of State for Transport to optimise the delivery of the East West Railway. This team reviewed the East West Rail proposals and led a value engineering and programme delivery review that identified how the value and benefits from this project can be realised as quickly as is possible. The new EWR Company will run Britain's first integrated rail operation for decades and be a separate organisation to Network Rail. The Company is looking at how the EWR route can be delivered and maintained.

**How many EWR2 trains will run and to what destinations?**

In addition to existing train services, there will be new services from:

Oxford and Milton Keynes; stopping at Oxford Parkway, Bicester, Winslow and Bletchley. There will be two trains each way per hour.

Oxford and Bedford; stopping at Oxford Parkway, Bicester, Winslow, Bletchley, Woburn Sands and Ridgmont. There will be one train each way per hour.

Milton Keynes and Aylesbury with stops anticipated at Bletchley, Winslow, and Aylesbury Vale Parkway. There will be one train each way per hour.

**When will construction start and trains begin to run?**

Depending on funding, construction of the line between Bicester and Bletchley will start at the end of 2019 with trains operating from 2023.



Milton Keynes Council will spend an extra £500,000 this year on tackling fly tipping, deep cleans, tree management, roundabout improvements and replacing broken grid road name signs. An additional £100,000 has been set aside for MK's seven priority regeneration neighbourhoods for residents to determine how best to improve their local public space.

In the 2019/20 budget, 1% was added to MK's Council Tax to fund public realm improvements under the heading of 'Getting the Basics Right'.

Local councillors, parish councils and residents associations will help MK Council determine the best locations and timing for the improvement work.

Initial plans include:

Piloting CCTV in fly tipping hot spots, plus dash cams on council vehicles to help capture

evidence of fly tipping. The fine for fly tipping can be up to £50,000 and/or a prison sentence up to 5 years.

- Buying a new dedicated street deep clean vehicle.
- Using state of the art ultrasonic devices to detect internal tree decay. This will help the council make more informed decisions about how to manage mature trees.
- Replacing missing V and H signs on the grid roads.
- Several roundabouts to be smartened up and have other essential work.
- A survey of regeneration estates to check the condition of litter bins, benches and other street furniture, as well as the need for graffiti removal and pest control.

Council Leader Pete Marland said: “I recognise that some of MK is looking a little unloved as we’ve had to make £144m of cuts since 2011 while dealing with massive extra demand for our services, especially from MK’s most vulnerable people. But we’ve listened to what residents are telling us. We all want to be proud of where we live which is why we’re putting half a million pounds back in to make MK cleaner and greener.”



### **Funding**

#### **MK Council’s Cabinet approves three-year highways improvement programme**

MK Council’s Cabinet has given the green light to a substantial investment for a three-year highways programme which will see major improvements in road resurfacing, street lighting and road safety measures.

The £28m investment (identified to date) – around £11m of which will be spent this financial year - comes on top of recent additional budget commitments to replace broken road signs and paint worn white lines across MK.

The council is also on track to repair 20,000 potholes and other issues by April 2019, which was a commitment made in last year’s budget.

In October, MK Council changed its criteria for determining whether a pothole needed a repair. Potholes just 40mm deep are now repaired (previously 50mm).

Works in the new programme include:

- Road resurfacing to fix potholes and damage
- Upgrading footways/redways to improve pedestrian access and cycling routes
- Upgrading street lighting to energy efficient LED lights



By planning its highways repairs well in advance, the council hopes to minimise disruption on the roads. Additional road resurfacing should prevent costly short term repairs.

Council Leader Councillor Pete Marland said: "Roads inevitably suffer wear and tear, and we know some do need extra attention. We've approved this significant investment as we want MK's roads to be and stay in good shape. Drivers, cyclists and pedestrians alike should notice a big improvement."



#### Speed Reduction Plan

Please note that the website is now live and accepting applications for 20mph speed limits:

<https://www.milton-keynes.gov.uk/highways-and-transport-hub/road-safety/introduction-of-20-mph-speed-limits-into-residential-areas>



#### Clear Sacks

The Council is confident with the changes in the delivery method for sacks that they are now on top of the requests that are coming through, if however you have properties that have experienced issues with receiving them prior to the changes last week then please let me know as I will be happy to arrange delivery of these myself.

Tony Brown - Waste Services Officer

Milton Keynes Council, Milton Keynes Waste Recovery Park, 9 Dickens Road, Old Wolverton, Milton Keynes, MK12 5QF

email: [Tony.Brown@milton-keynes.gov.uk](mailto:Tony.Brown@milton-keynes.gov.uk)

#### Contacts

- For all Serco Landscape contract works enquiries, please contact Euan Darling or Mansour Moini - Please contact the helpline via the link below for new issues.
- For Tree (TPO TCA and Insurance related) enquiries contact Robert Widd.
- For Rights of Way, please contact Rosie Armstrong or James Walsh.
- For High Hedges enquiries and development related Tree issues please contact Stephen Narborough.
- For Planning, S106, Biodiversity and Ecology issues please contact Diane Evans or Phil Snell.
- For Flood Strategy please contact Ashish Patel.

To log a new issue or enquiry, go to: <https://my.milton-keynes.gov.uk/>



**Roadworks** - The new interactive service allows you to search for any planned works by area, road name, ward or parish, road type or reason. You can also see the current closures and those scheduled for the next two weeks.

Area	Road name	Start Date	Start Time	End Date	Finish Time	Type
WAVENDON	Crow Lane	18/04/19	9:30am	18/04/19	4:30pm	ROAD CLOSURE
WAVENDON	Link Road Southern Kingston Roundabout T	15/04/19	8:00am	18/04/19	6:00pm	LANE CLOSURE
WAVENDON	Cross End	07/05/19	24 hours	09/05/19	24 hours	ROAD CLOSURE

This tool will help you check what is planned for a particular route or area so you can avoid any issues that may affect your journey. The information is updated every week.

Some works may be subject to changes due to unforeseen circumstances such as a road traffic collision or incident, weather conditions or operational reasons. Check the Highways View as an

Alternatively you can view the information shown in the Highways Register through a Google map based system on [www.roadworks.org](http://www.roadworks.org)

Steven Shearer - Network Support Officer (Highways Services)

Direct: +44 (0)1908 253428

Switchboard: +44 (0)1908 691691

Email : [Steven.Shearer2@milton-keynes.gov.uk](mailto:Steven.Shearer2@milton-keynes.gov.uk)

Visit Online : <http://www.milton-keynes.gov.uk/streets-transport-and-parking>

---



### Armed Forces Covenant survey

Could you spare a couple of minutes to take part in a short survey on MKC's involvement in the Armed Forces Covenant? We'd like to understand what you know about the covenant before activity and training rolls out over the summer.

We also want to find out how many people at MKC are or used to be in the Armed Forces Family. Thanks in advance.

<https://www.surveymonkey.co.uk/r/NNFQHBB>

***David Hopkins / Victoria Hopkins / Alice Jenkins***



The Great British Spring Clean kicks off on 22 March. It's a national campaign aiming at getting half a million people out for a litter pick near to them.

You can get involved and help make MK a little cleaner by joining an existing event or even organising a pick of your own



We're really proud of our adult social care hospital discharge team. Through their hard work and smarter use of resources, we're now ranked 1st in England for prompt rates of hospital discharge, which means people who need social care support are getting home quickly and safely after a stay in hospital.

- Fully integrated into the Hospital Discharge Team. Eight social care staff managing flow through intermediate care services, based in our Bletchley office and a team manager and eight social care staff based in the hospital.
- Social worker and Home 1st team leader providing a duty response to A&E.
- Social workers attending daily board rounds and tracking patients from admission to discharge.
- Pre-admission assessments in place for those identified as vulnerable during their outpatient appointment.
- Attendance at multi-agency discharge (MADE) events.
- Daily teleconference to review key patients.
- Timely access to Intermediate Care services including recuperation pathways.
- Better oversight and sign-off of non-acute delays.



#### **Funded by your local council**

Council tax payers financially support hundreds of local groups, projects and events every year but this doesn't always get acknowledged.

Although we sometimes ask groups we support to include a council logo in their promotional materials as an acknowledgement for funding, I've asked our communications team to create a simple graphic that spells out the amount of money being provided (example above). If you're negotiating funding, please let your contact know at an early stage that MKC expects the new graphics to be used. Contact the comms team for a tailored version of the new graphic to pass on.



This is a change for us, but other councils and wider organisations from the Arts Council to the National Lottery already ask for their funding support to be made clear. Many partners will already be familiar with this way of acknowledging funders and being transparent.



## **MKC Senior Staff List Corporate Core - MKC Senior Team 2019**

<b>Chief Executive</b>	<b>Michael Bracey</b>	<b>01908 252200</b>
------------------------	-----------------------	---------------------

<b>Contact Us</b> <a href="http://www.milton-keynes.gov.uk">www.milton-keynes.gov.uk</a>	<b>Email:</b> <i>firstname.surname@milton-keynes.gov.uk</i>	<b>Tel: 01908 691691</b>
---	--	--------------------------

<b>Resources Corporate Director</b>	<b>Paul Simpson</b>	<b>01908 253374</b>
<b>Service Director: Legal and Democratic Services</b>	<b>Sharon Bridglalsingh</b>	<b>01908 252095</b>
<b>Service Director: Finance and Resources</b>	<b>Steve Richardson</b>	<b>01908 252756</b>
<b>Head of Revenues and Benefits</b>	<b>Robin Bates</b>	<b>07738 636820</b>
<b>Assistant Director: Audit &amp; Risk Management</b>	<b>Duncan Wilkinson</b>	<b>01908 252089</b>
<b>Service Delivery Manager: ICT</b>	<b>Hazel Lewis</b>	<b>01908 254117</b>
<b>Capital Programme Director</b>	<b>Kamran Rashid</b>	<b>07792 540523</b>
<b>Head of HR</b>	<b>Musrat Zaman</b>	<b>01908 254278</b>
<b>Head of Customer Service, Digital and Transformation</b>	<b>Vacant from November 2017</b>	
<b>People Corporate Director</b>	<b>Michael Bracey</b>	<b>01908 258041</b>
<b>Director of Public Health (Shared with Bedford &amp; Central Bedfordshire Councils)</b>	<b>Muriel Scott</b>	<b>01908 254241</b>
<b>Service Director: Children's Services</b>	<b>Mac Heath</b>	<b>01908 253121</b>
<b>Service Director: Adult Services</b>	<b>Victoria Collins</b>	<b>01908 253270</b>

<b>Assistant Director: Joint Commissioning</b>	<b>Mick Hancock</b>	<b>01908 252091</b>
<b>Place Corporate Director</b>	<b>Duncan Sharkey</b>	<b>01908 253411</b>
<b>Service Director: Housing &amp; Regeneration</b>	<b>Michael Kelleher</b>	<b>01908 254167</b>
<b>Service Director: Public Realm Services</b>	<b>Tom Blackburne-Maze</b>	<b>01908 252213</b>

<b>Service Director: Planning, Culture and Infrastructure</b>	<b>Vacant from August 2017</b>	
<b>Head of Economy and Culture</b>	<b>Pam Gosal</b>	<b>01908 252192</b>
<b>Head of Placemaking</b>	<b>Neil Sainsbury</b>	<b>01908 252708</b>
<b>Head of Development Management</b>	<b>Brett Leahy</b>	<b>01908 252609</b>
<b>MKDP Chief Executive</b>	<b>Charles Macdonald charles.macdonald@mkdp.co.uk</b>	<b>01908 253899</b>
<b>Independent Chair</b>	<b>John Duggan john.duggan@mkdp.co.uk</b>	<b>01908 253405</b>
<b>Director of Strategy &amp; Futures</b>	<b>Geoff Snelson</b>	<b>01908 252665</b>

<b>Acting Service Director: Policy, Insight &amp; Communication s</b>	<b>Sarah Gonsalves</b>	<b>01908 252275</b>
<b>Head of Communications</b>	<b>Kellie Evans</b>	<b>01908 252413</b>

## CHANGES TO THE COUNCIL'S SENIOR MANAGEMENT STRUCTURE

Our current three directorate model plus small 'corporate core' was put in place four years ago. While this has helped teams share some closer practices and standards, we're yet to achieve our ambition for fully joined up thinking and working across the whole organisation. This can be frustrating for us, for councillors and for service users.

A new senior management structure is being developed that will help us operate more effectively as one council. The proposals are:

A new Deputy Chief Executive role will lead our critical support services, as well as a number of other business areas.

Instead of the current structure of three Corporate Directors and ten Service Directors, services will be led by nine Directors, who would all be regarded as 'chief officers' and full members of our Corporate Leadership Team (CLT). As you may be aware Duncan Sharkey has left the Council and we will not be replacing either his former role (Corporate Director – Place) or the role of Corporate Director – People.

The corporate core would be replaced with a new Chief Executive's Office, led by an Assistant Chief Executive (replacing the current role of Service Director – Policy, Insight and Communications), whose focus will be on improving organisational effectiveness and performance. Public Health will move into the Chief Executive's Office.

Subject to political agreement, the new structure could be in place by early March. The CEO (Michael Bracey) will share full details then, including a detailed breakdown of who will be leading on specific areas.

### **Corporate Leadership Team - March 2019**

Chief Executive - Michael Bracey, Head of Paid Service  
Director - Health and Social Care Integration - Jill Wilkinson  
Director - Finance and Resources - Steve Richardson  
Director - Law and Governance - Sharon Bridglalsingh  
Director – Environment and Property - Stuart Proffitt  
Director - Growth, Economy and Culture - Tracy Darke  
Director - Adult Services - Victoria Collins  
Director - Children's Services - Mac Heath  
Director - Housing and Regeneration - Michael Kelleher  
Director - Strategy and Futures - Geoff Snelson  
Director - Policy, Insight and Communications - Sarah Gonsalves  
Director - Public Health - Muriel Scott  
Deputy – Chief Executive - Paul Simpson



<b>Finance and Resources</b> Professional finance   Revenue and benefits   HR ICT   Customer services   LGSS   Audit and risk
<b>Environment and Property</b> Highways   Waste and Recycling   Transportation Property   Facilities   Management Regulatory services   Health and Safety
<b>Growth, Economy and Culture</b> Place Making   Planning   Economic development   Arts and Heritage   Historic environment   Leisure   Sports development
<b>Law and Governance</b> Legal services   Democratic services   Elections Civic events and mayoralty   Councillor support Governance
<b>Policy, Insight and Communications</b> Policy   Partnerships   Performance Communications   Information Governance Emergency Planning   Community safety
<b>Housing and Regeneration</b> Tenancy management   Repairs and maintenance Tackling homelessness   Strategic housing Regeneration and development   Private sector housing   Resident engagement and support
<b>Children's Services</b> Schools   Early years   Youth and community Special needs and disability   Safeguarding Family support   Children in care   Care Leavers
<b>Adult Services</b> Mental health   Learning disability   Physical disability   Older people's services Hospital discharge   Adult safeguarding   Commissioning
<b>Public Health</b> Health improvement   Health protection   Public health services   Needs assessment Strategy and Futures
<b>Strategy and Futures</b> Delivery of MK2050 Strategy   Regional Local Enterprise Partnership   Oxford to Cambridge Arc

