

Unitary Councillor Report

(Snippets) Report from Cllr David Hopkins, Cllr Victoria Hopkins & Cllr Alice Jenkins – Representing Danesborough & Walton at MK Council

October 2020 Combined Report



South East Milton Keynes (SUE)

A draft South East Milton Keynes Strategic Urban Extension Supplementary Planning Document (SE SUE SPD) is under development. Various meetings took place in 2020 including meetings with developers and a meeting with Local Stakeholder Group members for the site. Matters related to the site were discussed at Planning Cabinet Advisory Group (CAG) meeting on 13/07/2020 which lead to organising a workshop on SE SUE MK SPD matters.

Officers from Urban Design team led the Planning (CAG) workshop on 25/08/2020 where different response options for the concept plan and vision for the area were discussed.

Another Planning CAG workshop will take place in due course (likely October 2020) which will focus on the matters around Public Transport and social infrastructure for the site. It is anticipated that a draft SPD will be presented to Planning CAG members in December 2020 with a view of taking the draft SPD for delegated decision on consultation in January 2021 and public consultation on the draft taking place sometime in February 2021. It is anticipated that the SPD will be adopted in Summer 2021

Bus Services ... Some bus services are under threat. The Tariff does subsidise the 301 service but my understanding is that the 300 service is now commercial.

There is a risk to the 301 service and it is potentially one of the routes that may be proposed to be covered by DRT after April. Elected members are advised to attend the presentation if you can on 14 October (Contact for the link is Adele Wearing Adele.Wearing@milton-keynes.gov.uk) and encourage others to do so.

I haven't been given any information other than what was in papers for the DD the week before

<https://milton-keynes.cmis.uk.com/milton-keynes/Calendar/tabid/70/ctl/ViewMeetingPublic/mid/397/Meeting/6726/Committee/1354/SelectedTab/Documents/Default.aspx> last week but I'm not getting a good feeling about this at all and it will potentially impact on Whitehouse and Fairfields in the west as well.

Low Traffic Neighbourhoods – In response to a motion by Cllr D Hopkins to Full Council in September the Council agreed the following.

That this Council supports the concept of Low Traffic Neighbourhoods and requests the Cabinet investigates introducing them when and where feasible and appropriate, and where available funding allows, in locations where they have the support and involvement of the local community

At the same meeting, Cabinet Member, Councillor Emily Darlington agreed at Full Council that she would discuss with Councillor D Hopkins and Woburn Sands Town Council issues regarding the closing of the pedestrian (school) crossing of the railway track in Woburn Sands. And ...

Councillor Marland to arrange to discuss the access to the new housing development in Woburn Sands, particularly the implications resulting from the limited access likely to be possible over the railway track with the Danesborough and Walton Ward Councillors and the relevant Parish / Town Councils. Councillor Marland to also request officer colleagues to make publicly available the feasibility study on options for access to the housing development over the railway line

PLANNING



19/08/2020

Central Bedfordshire Council

<http://cbstor.centralbedfordshire.gov.uk/publicportalviewer/publicViewer.html?caseID=CB/20/02845/OUT>

Parish Name: Aspley Guise

Location: The Strawberry Farm, Salford Road, Aspley Guise, Milton Keynes, MK17 8HY

Proposal: Outline application: proposal including access for no. 73 new residential dwellings, public open space and associated works

Case Officer: Debbie Quinn Decision: This case has not yet been decided ...

Aspley Guise PC wish to object to the planning application CB/20/02845/OUT The Strawberry Farm, under the following material planning considerations: 1. Highways Issues: it is thought this application for 73 additional houses will create a lot of additional traffic on small country lanes that are already poorly surfaced, and have limited or no pavement for pedestrians. In addition the new houses will create more traffic through the centre of Aspley Guise which already sees congestion in rush hour traffic through the village square. 2. Incompatibly or unacceptable uses: this land is supposed to be within the green buffer zone surrounding the village. 3. Incompatible or unacceptable uses: over development of land. 4. Noise and disturbance: through the development phase and with the additional number of houses. 5. Deficiencies in social facilities: Aspley Guise has limited amenities, there is no GP surgery or shops and the village only has lower schools. Additional housing would mean that residents have to travel through the centre of Aspley Guise to reach the neighbouring villages of Woburn Sands and Woburn for shops and GP surgeries and puts more pressure on the schools in other locations. In addition there are factual inconsistencies within the design and access statement (section 9), which states that detailed discussions have taken place with local stakeholders and lists potential funding towards two projects: levelling of Townlands and building a new sports pavilion, both of which are currently owned by the PC. No discussions have taken place with the PC on these.



with Wavendon



Hydrant Misuse in Wavendon.

Following recent complaints and information received from residents in Wavendon, Aquam water in association with Anglian Water have successfully caught and warned several illegal users of water in the area.

Connecting to the water network via a washout point in the pavement, and using any equipment other than that approved by Anglian Water is a criminal offence under the 1991 Water industry act. Unfortunately, people are still prepared to flout the rules. The unauthorised use of equipment can cause cracked pipes, reduced water pressure, broken hydrants and burst mains. There have been instances of contamination and discolouration in areas where the illegal extraction of water has taken place. Anglian Water has partnered with Aquam Water Services to supply the only legal standpipe acceptable for the local network. These are coloured Pink and have meters attached to them to measure the supply of water. They also have a non-return valve fitted to prevent any accidental contamination. Examples of these are shown below. Any other colour or type is illegal and should be reported immediately to Aquam water on 01733794641, e mail anglianwater@aquamcorp.co.uk. If a photo can be taken safely from a distance then this would help with any identification, but please do not approach anyone seen taking water.

All five Parishes



Water theft in the UK has reached very high levels, it is thought that this cost to the industry may be in excess of £500 million per year. Most of this activity is by operators being ignorant of the law, but there are many who deliberately flout the rules for financial gain. Anglian water has recently had success in the courts with one company being fined £5000 after being caught 3 times within a 6-month period. All users of Anglian Water standpipes have to undergo training to enable them to use the equipment safely not only for themselves but to safeguard the water supply. Hopefully with the support of the public and courts we can ensure that all illegal activity can be prevented.

Charlie Webster - Compliance Officer (Aquam Water Services)



Oxford to Cambridge Arc

The Oxford to Cambridge Arc, which the Chancellor of the Exchequer described as a “key economic priority” for the country, has unveiled its bold vision in a prospectus that has been submitted to Government.

The Arc’s ambition is to unlock the potential of its assets to create a world-leading innovation economy.

The Arc is already home to nearly four million people and two million jobs which together generate over £111bn of economic output each year. Based upon determined leadership and new financial backing, forecasts show that increased productivity resulting from intensifying the Arc's global strengths in science, technology and high value manufacturing, could double the area's economic output to over £200bn by 2050.

Councillor Barry Wood, Chair of the Arc Leaders Group and Leader of Cherwell District Council, said: "The Arc region has a critical mass of research, high-technology expertise and innovation assets found nowhere else in the UK. Yet we are at a pivotal time, during which our nation's economic resilience is being tested far beyond anything we've seen before. Working with Government we can release the potential of the Arc's key sectors, scientific community and entrepreneurial spirit to propel our country's response to the major national and global challenges we face."

The prospectus asks for commitment from Government to long term investment in the area, enabling the Arc to fulfil its true potential to deliver transformational economic growth that will benefit the whole of the UK. That investment will be crucial to tackle connectivity and congestion constraints and to provide the skills that industry requires to enable the Arc to pursue its role as a leading global innovation region.

Jeremy Long, Chair of the Arc Local Enterprise Partnerships Group, said: "Our vision is for the Arc to be a global hub for innovation, and home to exemplary models of green development that will inspire communities around the world. The Arc's place is at the forefront of the UK's green recovery and this will be made possible through bold leadership that focuses on the big opportunities. The Arc's world-leading innovation across multiple sectors can deliver prosperity for the UK. We now need the commitment from Government and international investors to make the ambition a reality."

The Arc will pursue innovation-led growth to help solve major, urgent environmental, health and social challenges, and at the same time, drive UK competitiveness and local prosperity. The Arc's vision specifically sets out a plan to make the UK a world-leader in new technology and industries in zero-carbon aviation, space, life sciences, future mobility and energy.

Professor Sir Peter Gregson, Chair of the Arc Universities Group, said: "With investment, we can better connect and realise the potential of our world-class assets and the know-how created by our area's people, businesses and institutions. We aim to be a testbed for new ways of living and working including by demonstrating net zero carbon and environmental net gain are achievable and economically beneficial. This connection will unlock the potential across our sector strengths to propel the Arc and the UK into an era of global growth at the vanguard of innovation."



Marshall of Cambridge has signed a long-term option on land at Cranfield University's massive site in the event of moving its Aerospace and Defence business there.

But the company insists it does not mean that a move to RAF Wyton – the only other option now Duxford has been ruled out – has been erased from the relocation equation.

The official line is that Marshall is thinking long-term in securing Cranfield space while it makes a final decision on whether to stay in Cambridge or move thousands of jobs and a world-leading ADG group 40 miles down the road to Bedfordshire.

Marshall confirms that it has signed an Option Agreement for a 150-year lease on a parcel of land on Cranfield University's proposed Air Park development.

ADG interim chief executive Gary Moynehan, said: "Whilst it is important to note that the signing of the Option Agreement does not represent a final decision to relocate Marshall Aerospace and Defence Group to Cranfield, we are pleased to have reached an agreement which provides us with a credible relocation option.

"We are very excited by Cranfield's ambitions to create a Global Research Airport and are already collaborating closely with them on a number of R & D projects.

"As such, the signing of this Option Agreement represents a further strengthening of a valuable relationship that I am sure will deliver significant benefits to all parties over the years ahead, irrespective of where we ultimately make our new home.

"However, there are still a wide number of factors that we need to take into account before making any definitive decision about the best location or locations for the MADG business when we ultimately relocate by 2030."

Professor Sir Peter Gregson, vice-chancellor and chief executive at Cranfield University added: "We are delighted to be progressing our talks with Marshall through the signing of this Option Agreement.

"Located at the heart of the Oxford-Cambridge Arc, Cranfield with its Global Research Airport and MADG would provide a vibrant ecosystem of research, technology demonstration and innovation in aerospace that is unrivalled in the UK.

“We believe the relocation of MADG to Cranfield would further strengthen the partnership between one of the UK’s leading privately-owned aerospace and defence companies and one of the UK’s leading aerospace and defence universities.”



South East Milton Keynes Development Proposals

Please note that the presentation from recent Planning CAG workshop that took place on the 25/08/2020 and meeting notes with actions are now available on the CMIS system <https://milton-keynes.cmis.uk.com/milton-keynes/Calendar/tabid/70/ctl/ViewMeetingPublic/mid/397/Meeting/6760/Committee/1386/SelectedTab/Documents/Default.aspx>.

As per the Leader of the Council’s request you are invited to submit your comments to newly set up mailbox: semk@milton-keynes.gov.uk

It would be appreciated if your comments could be kindly submitted by 18th September 2020 to allow officers to collate and feed back to Cllr Marland.

The long-promised workshop on Public Transport matters will be set up in due course!

Contact: Sabina Kupczyk - Senior Planning Officer | Development Plans

E: sabina.kupczyk@milton-keynes.gov.uk

T: 01908 25 3132

W: <https://www.milton-keynes.gov.uk/planning-and-building/>



Danesborough & Walton streets are becoming increasingly strewn with discarded facemasks and protective gloves. As well as being unsightly and potentially dangerous for pets and wildlife there is also the risk that they could spread infection. The World Health Organisation has warned that appropriate disposal is essential to avoid any increase in transmission.

Facemasks, gloves and other forms of PPE are designed to protect people but poor disposal risks doing the opposite. We would remind residents to think about how they dispose of their waste.



Report a Missed Collection



<https://www.milton->

[keynes.gov.uk/waste-recycling/report-or-request-it/report-a-missed-collection](https://www.milton-keynes.gov.uk/waste-recycling/report-or-request-it/report-a-missed-collection)

Wavendon and Woburn Sands have suffered from 'localised' mixed collections in recent weeks.

Please inform MK Council if it has missed collecting your rubbish or recycling by completing the on-line form below or call Customer Services on tel. 01908 252570. Before you report a missed collection please check that:

- that it was placed at the edge of your property by 7am on your usual collection day
- collection is not delayed due to Bank Holiday collection
- incorrect items have been placed in the recycling containers

If incorrect items have been placed in a recycling container it will not be collected or emptied. Check what can and cannot be recycled in the different containers please.

<https://www.milton-keynes.gov.uk/waste-recycling/bins-bags-and-boxes>

Please note: Two different vehicles collect waste and recycling from your street - one for the black bin bags, clear recycling sacks and blue boxes for glass, and the other collects the green wheelie bin and yellow battery bags.

You will have a 48 hour window to report a missed collection to MK Council - after this period the council will not return until the next scheduled bin collection day.

The missed collection form on the Report It part of the MK Council Web Site contains information about your waste collection and will highlight if there was an issue with your bins, bags or boxes that prevented the collection. If there was an issue, or if the crew have not yet completed your street you will not be able to log a missed collection.



New Waste Collection Trial underway in some parts of MK



Grey wheeled bin collected weekly for residual waste



A wheeled bin with a blue lid plastic, metals and glass



A wheeled bin with a red lid for paper and card



A battery container that hangs on the side of the bin

Last year MK Council promised that it would look at cleaner, greener and safer solutions to MK's waste collection. MK is one of the best places for high recycling rates in the UK, and was one of the first places in the country to introduce kerbside recycling, back in 1992. It was the first to build its own in-borough recycling plant.

Milton Keynes Council will be trying out a new cleaner, greener and safer waste collection system from Monday 26 October. The pilot will last for 4 months and will cover just under 3,000 homes. This pilot will test whether wheelie bins are part of the solution in making MK the Greenest City.

In the pilot, wheeled bins will replace sacks to test whether this keeps the streets of MK cleaner with less bags being ripped open by wildlife; increases the levels of recycling; and makes it safer for residents and collection crews who occasionally can be injured by contents of sacks.

Residents will be provided with 3 bins replacing black bags, recycling sacks and the blue box. One bin will be for residual waste, one bin for paper and another for all other recycling including glass, metal and plastics. For those homes unable to accommodate bins, boxes similar to the current blue box will be provided. Green waste and assisted collections will remain unchanged.

Homes within the pilot area (which does not include Wavendon & Woburn Sands at present) can expect to receive a letter by the end of September.

The pilot will help MK Council develop options for consultation and learn about how people use and feel about wheeled bins before any decision is made. The Council will be asking for feedback from people in the pilot and from the teams making the collections. A 12-week borough wide public consultation will then start on 2 November 2020.

A decision will be made in March 2021 to inform our next waste collection contract (beginning in 2023)

More information on the waste collection pilot is on the MK Council website. Should residents have queries, there is a section on the website (<https://www.milton-keynes.gov.uk/waste-recycling/recycling-pilot>) for frequently asked questions, which will

All five Parishes

be updated following any feedback received. Residents can also contact recycling-pilot@milton-keynes.gov.uk or 01908 253334.



A421 Closures

https://www.centralbedfordshire.gov.uk/info/55/transport_roads_and_parking/575/a421_upgrade/3

Planned closures

The A421 between the Eagle Farm Roundabout up to M1 Junction 13 will be closed temporarily from 8pm on Friday 9 October until 6am on Monday 12 October.

This closure will allow us to complete surfacing work and undertake more white lining, safety barrier and signage works.

Diversions

While the M1 will be open, motorists should be aware that Highways England are closing the slip roads at Junction 14 of the M1 on Friday night and therefore the M1 should not be used as a diversion. Please follow the signed diversion route.

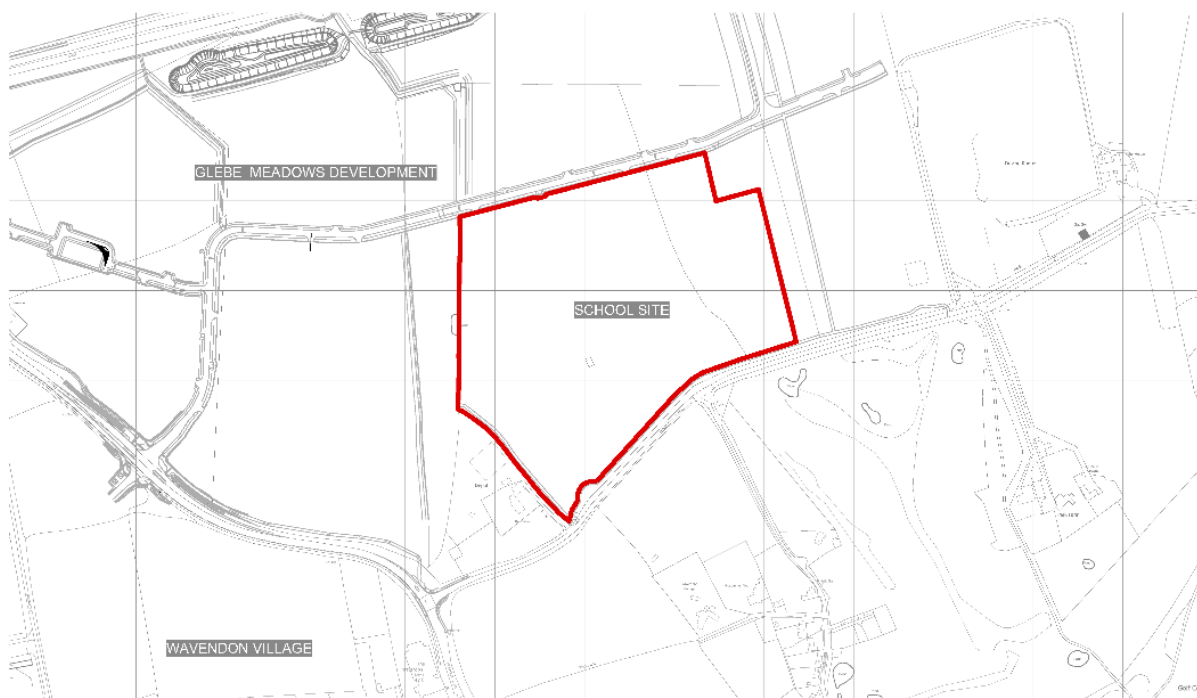


with Wavendon Glebe Farm School campus



**Inspiring Futures
Through Learning**

All five Parishes



Inspiring Futures through Learning

www.iftl.co.uk | T: 01908 533283 | M: 07739 791869



Plans for schools in the Fulbrook pyramid

Central Bedfordshire Council has moved to the next stage of the Schools for the Future programme in Woburn Sands and the surrounding villages, known locally as the Fulbrook pyramid.

The publication of statutory notices follows a 12-week public consultation, which received over 590 responses between January and April this year.

It has considered the feedback and developed a revised plan which will be split into two phases.

The first phase, which forms this statutory consultation, focuses on Aspley Guise and Swallowfield lower schools and Fulbrook Middle School.

There will be a further public consultation for the second phase, regarding a proposal for Husborne Crawley, Ridgmont and Woburn Lower Schools to federate on one new site, once a proposed site for the school is known.

The revised plan for the first phase is:

Aspley Guise Lower School

a change of age range from 5-9 to 5-11, from lower to primary, from 2022

an increase to the published admission number from 27 to 30, with 1 form of entry

an expansion of the school premises

Swallowfield Lower School

a change of age range from 2-9 to 2-11, from lower to primary, from 2022

the published admission number to remain at 60, with 2 forms of entry

an expansion of the school premises

Fulbrook Middle School

a change of age range to become an extended secondary school, with 4 forms of entry, aged 9-16 (Yrs 5-11) in 2022.

a change from an extended secondary to a secondary school, aged 11-16 (Yrs 7-11) in 2024, by which time all of the lower schools within the Woburn Sands area will have changed to primary schools



For more information go to

<https://www.schoolsforthefuture.co.uk/plans/woburn-sands/overview>

Congratulations to all that have been involved in the Community Hall project in Bow Brickhill. But there is still more to be done in terms of additional fundraising which your local councillors have been very much involved in ...



Please help save this vital community asset



An action plan for bringing more people from Milton Keynes' diverse communities into the arts and heritage sector will be launched this month. Included in it is a £50,000 investment from Milton Keynes Council in a traineeship and apprenticeship programme. This will open new pathways to the sector for young people from diverse communities. The action plan is a core part of a report by the Arts and Heritage Alliance Milton Keynes (AHA-MK): Rethinking Cultural Inclusion and Diversity: A Call to Action for Milton Keynes. This report is based on research commissioned and funded by Milton Keynes Council, and conducted by AHA-MK.

Central to this research are the voices the people of Milton Keynes. AHA-MK ran 12 focus groups to explore views and understanding of the arts and heritage sector. These focus groups represented a range of diversity, including ethnicity, religion, disability, gender, sexual preference, socio-economic deprivation and age.

A survey was conducted with the Milton Keynes arts and heritage sector to examine diversity in audiences, in the paid and unpaid workforce, and in programming. There is much good inclusion and diversity practice within the sector, but more can be done. The Call to Action asks the arts and heritage sector to place inclusion and diversity at the heart of its organisations. It invites diverse communities to walk alongside the sector on this journey to ensure Milton Keynes cultural sector becomes a leading light in inclusion and diversity. MK's cultural sector is at heart of the community and more must be done to connect and engage with local people.



Expressway Update

We are now pausing further development of the Oxford to Cambridge expressway project while we undertake further work on other potential road projects that could support the

Government's ambition for the Oxford-Cambridge Arc, and benefit people who live and work there.

We look forward to working closely with our local partners to explore these issues and bring forward plans that make a real improvement in the area.



Community Champions in Dnesborough & Walton wanted to share key COVID-19 information

We're calling on you to help reach friends, family, neighbours, colleagues and thousands of other local people with trusted information and advice related to COVID-19.

Throughout the pandemic, the Community, Town and Parish Councils have been keeping residents informed and up to date with local information and the latest government and health advice. In light of increasing infection rates and changing restrictions, we're keen that as many residents as possible are kept up to date with the latest advice and information.

But we know we won't reach everyone, so we're calling for people to sign up to become Community Champions to help us reach more of the local community.

Many people have wanted to help others throughout the pandemic but were unsure how to go about it. Being a Community Champion is an easy way to make a massive difference, by sharing the latest information and advice with friends and families. This could be via local Facebook groups, WhatsApp groups, social organisations and clubs that people are part of.

Volunteers will be provided with the latest information to share at the click of a button – it's that simple. It won't take up a huge amount of time, but it could really help make a massive difference in helping to keep our families, friends and communities safe.



Travellers

There have recently been Travellers camped on land at Walnut Tree and then at Wavendon Gate.

Should Travellers appear on or close to your land or on a site close to you please contact Pete Roberts - Team Leader (Environmental Crime Unit – MK Council)

T: 01908 254569

E: Pete.roberts@milton-keynes.gov.uk

Should you need to contact Thames valley Police our local Police Sergeant (Sgt Thomas Neilson) is the best contact for initial advice and guidance

Police action and community impact always is assessed and as I hope readers will be aware there is legislation and policies in place that both the police and local council have to adhere to before they look at positive steps to bring this to a conclusion. First aspect is identifying the landowner who has to act. They identify the land as belonging to them and then they make the request for the encampment to leave. This will then usually follow a sec 77 notice being served requesting the encampment to leave. If this is not adhered to then they would look to seek a court order for eviction. In most cases this works however on occasions the police do have Sec 61 powers:

They require set criteria in law that we all have to follow:

The list is not too exhaustive however I will pick out pertinent points:

- * 2 or more vehicles
- * Damage caused to gain access to the land (such as padlocks being broken, fence posts removed from the ground or fencing damaged etc)
- * Aggravating factors present such
 - Local amenities are deprived to communities
 - Local disruption to the economy
 - Significant disruption to the local community or environment
 - There is a danger to life
 - There is a need to take a preventative course of action

To assess all of the above when a group move onto a new site is very difficult and TVP and the Council struggle a bit at weekends when it comes to who is the landowner and also being able to get a landowner out to the site to confirm it is their land and make the official request to leave.



South East Milton Keynes

A draft South East Milton Keynes Strategic Urban Extension Supplementary Planning Document (SE SUE SPD) is under development. Various meetings took place in 2020 including meetings with developers and a meeting with Local Stakeholder Group members for the site. Matters related to the site were discussed at Planning Cabinet Advisory Group (CAG) meeting on 13/07/2020 which lead to organising a workshop on SE SUE MK SPD matters.

Officers from Urban Design team led the Planning (CAG) workshop on 25/08/2020 where different response options for the concept plan and vision for the area were discussed. Another Planning CAG workshop will take place in due course (likely October 2020) which will focus on the matters around Public Transport and social infrastructure for the site. It is anticipated that a draft SPD will be presented to Planning CAG members in December 2020 with a view of taking the draft SPD for delegated decision on consultation in January 2021 and public consultation on the draft taking place sometime in February 2021. It is anticipated that the SPD will be adopted in Summer 2021.



Council launches £500,000 Green Business Recovery Fund to drive sustainable recovery

As part of its £2.25m investment to help MK businesses recover from COVID-19, MK Council is inviting proposals for a new £500,000 Green Business Recovery Fund.

The Fund is open to MK businesses as well as business and community groups, who must demonstrate how they can create more sustainable jobs and growth. Ideally, green business practices should support the Council's ambition for MK to become carbon neutral by 2030 and carbon negative by 2050.

Submissions should show how they go beyond helping individual firms but also help MK become a greener and cleaner city. The Council is particularly interested in receiving community-based bids that benefit areas earmarked for estate renewal and regeneration,

as well as help for SMEs and green start-ups, green economy supply chains and skills development to support green technology.

Organisations have until 30 October to share their proposals. Further information about how to submit bids can be found on the Council's Green Business Recovery page.

Cabinet Member for Economy and Culture, Councillor Carole Baume said: "We want the Green Business Recovery Fund to be a genuine boost for sustainable schemes and behaviour. Covid-19 has put unprecedented financial pressure on our local economy, and this is an opportunity to help businesses recover – and do so responsibly.

"I hope we receive a good mix of large and small schemes, including proposals that benefit some of our more vulnerable communities."

MK Council is already taking steps to encourage sustainable growth, including an investment of £50m to improve the energy efficiency of council homes, and creating a local energy centre as part of the regeneration proposals in the Lakes Estate.

A separate scheme has been established for green transport initiatives which was announced earlier this week.

MK Council sets aside half a million pounds to provide new greener transport initiatives

Councillors are set to approve a fund of £500,000 towards sustainable and active transport in MK at a meeting on 6 October.

Ambitious plans are in place to encourage more people in Milton Keynes to cycle, walk, scoot or use public transport, building on a rise of public participation in greener, people-powered journeys, with figures showing that since the start of the COVID-19 pandemic, there's been an increase of almost 60% people cycling in some areas of MK.

As well as helping MK take a further step towards becoming one of the greenest and most sustainable cities in the world, the proposed package aims to promote mental and physical health and wellbeing, and feed into the overall post-COVID economic recovery plan by encouraging people to use active forms of transport to commute to work and school, explore our many green spaces and visit all the wonderful independent shops and eateries hidden across the new city, all whilst improving fitness levels and enjoying the great outdoors.

To get the action plan moving swiftly, MK Council would commit to investing in the right infrastructure, supplementing existing schemes and working with local partners. New plans include:

- Providing small grants to workplaces to encourage staff to adopt sustainable transport;

All five Parishes

- Access to bike schemes – providing access to bikes for people that are unemployed, on low incomes or whose circumstances make them vulnerable;
- More security cameras and activated flood lights at key transport interchanges such as Station Square, Bletchley Station and the Coachway to ensure people feel safe;
- Using our unique redway system for guided CMK walks and mobile film screenings, to open them up to people who may otherwise not use them;
- Improving the Get Smarter Travel website, journey planner and interactive map and developing an MK Transport App integrating all mobility providers in MK on to one platform.



With Planning Officers

OFFICER CONTACT DETAILS

East Team

07795 475593	Paul Keen	Team Leader
07795 475584	Katy Lycett	Senior Planning Officer
07795 475586	Chris Walton	Senior Planning Officer
07392 133920	Lakeisha Peacock	Senior Planning Officer
07795 475597	Carrie Chan	Planning Officer
07775 111052	Tamlin Barton	Planning Officer
07717 148931	Sundas Shaban	Planning Officer

Development Services

01908 254794	Tom Halsey	Development Services Officer
01908 253052	Sonia James	Development Services Officer

Enforcement Team

01908 254777	Gary Dunne	Senior Enforcement Officer
01908 253573	Zehn Sajid	Enforcement Officer
07972 769351	Colins Mwapaura	Enforcement Officer

West Team

07384 241816	Elizabeth Verdegem	Team Leader
07775 110877	David Buckley	Senior Planning Officer
07795 475594	Jeremy Lee	Senior Planning Officer
07795 475592	Richard Edgington	Senior Planning Officer
07795 475595	Charlotte Ashby	Planning Officer
07775 111209	Joe Read	Planning Officer
01908 254643	Rachel Larner	Planning Officer



with this MK Council Press Release! ... Oxford to Cambridge Arc: a global asset and national investment priority

Bold vision to create a global hub for innovation and green development that inspires communities worldwide

The Oxford to Cambridge Arc, which the Chancellor of the Exchequer described as a “key economic priority” for the country, has unveiled its bold vision in a prospectus that has been submitted to Government. The Arc’s ambition is to unlock the potential of its assets to create a world-leading innovation economy.

The Arc is already home to nearly four million people and two million jobs which together generate over £111bn of economic output each year. Based upon determined leadership and new financial backing, forecasts show that increased productivity resulting from intensifying the Arc’s global strengths in science, technology and high value manufacturing, could double the area’s economic output to over £200bn by 2050.

Councillor Barry Wood, Chair of the Arc Leaders Group and Leader of Cherwell District Council, said: “The Arc region has a critical mass of research, high-technology expertise and innovation assets found nowhere else in the UK. Yet we are at a pivotal time, during which our nation’s economic resilience is being tested far beyond anything we’ve seen before. Working with Government we can release the potential of the Arc’s key sectors, scientific community and entrepreneurial spirit to propel our country’s response to the major national and global challenges we face.”

The prospectus asks for commitment from Government to long term investment in the area, enabling the Arc to fulfil its true potential to deliver transformational economic growth that will benefit the whole of the UK. That investment will be crucial to tackle connectivity and congestion constraints and to provide the skills that industry requires to enable the Arc to pursue its role as a leading global innovation region.

Jeremy Long, Chair of the Arc Local Enterprise Partnerships Group, said: “Our vision is for the Arc to be a global hub for innovation, and home to exemplary models of green

development that will inspire communities around the world. The Arc's place is at the forefront of the UK's green recovery and this will be made possible through bold leadership that focuses on the big opportunities. The Arc's world-leading innovation across multiple sectors can deliver prosperity for the UK. We now need the commitment from Government and international investors to make the ambition a reality."

The Arc will pursue innovation-led growth to help solve major, urgent environmental, health and social challenges, and at the same time, drive UK competitiveness and local prosperity. The Arc's vision specifically sets out a plan to make the UK a world-leader in new technology and industries in zero-carbon aviation, space, life sciences, future mobility and energy.

Professor Sir Peter Gregson, Chair of the Arc Universities Group, said: "With investment, we can better connect and realise the potential of our world-class assets and the know-how created by our area's people, businesses and institutions. We aim to be a testbed for new ways of living and working including by demonstrating net zero carbon and environmental net gain are achievable and economically beneficial. This connection will unlock the potential across our sector strengths to propel the Arc and the UK into an era of global growth at the vanguard of innovation."

Leader of MK Council, Cllr Pete Marland said: "We welcome the submission of the prospectus which sets out ambitious proposals to support MK's future growth plans. MK is leading the way on innovation and green infrastructure with plans for a new university and major international headquarters choosing to move here. We look forward to continuing our work with partners to secure long term investment in the area so we can deliver a brighter future for our communities."



**Sign up to MK's new ordering tool for
takeaway, table service and delivery**
Free three-month subscription for Milton Keynes
businesses signed up by 26 October 2020



Council secures free contactless solution for local cafes and restaurants to boost Shop Local campaign

MK Council has secured the support of a contactless order and pay service to help local businesses respond to COVID-19 restrictions.

The deal supports the Council's #ShopLocalMK campaign, which it launched last week, with a competition for six lucky residents to win £100 worth of vouchers to spend on MK high streets.

Ritual, connects local restaurants and cafes to their customers by offering a way to place, pay and pick up orders through the web or an app. The introduction of Ritual in Milton Keynes will help local restaurants and cafes deliver their takeaway service, as well as allowing them to accept orders via QR code ordering for those dining-in safely in line with new government guidance.

To support Milton Keynes' local businesses in response to COVID-19, MK Council has secured a deal with Ritual and PayPal which allows MK businesses to keep 100% of the profits of sales made through the Ritual platform until the end of January 2021 with no commission, start up or subscription fees taken by the platform in this period.

The offer gives independent businesses the ability to accept digital orders from their own websites and social media accounts. Ritual has also integrated with Google ordering which will help local businesses reach more customers.

Businesses must sign up by 26 October to be eligible for the four-month FREE subscription, which can be cancelled at any time. Local cafes and restaurants will be provided with ongoing support to help them get the best out of the service as contactless orders become increasingly popular. More detailed information is available at the following link.

The introduction of Ritual will play a fundamental role in supporting small businesses as part of the council's #ShopLocalMK campaign. MK Council recently announced a £2.25m economic recovery package to support local businesses recover from the impact of COVID-19.

Cabinet Member for Economy and Culture, Councillor Carole Baume said: "This is an exciting partnership which will give local businesses the ability to expand their capabilities to accept digital orders in a new way.

"Ritual's launch in MK as part of our Shop Local campaign could give local businesses a vital lifeline to boost their sales. We know it's extremely hard for local businesses at the moment and we want to play our part in helping them get through these challenging times. Council colleagues have been working closely with Ritual who are keen to support our Shop Local campaign – they are a welcome addition to the MK market, which has seen other innovative apps launch since the start of the COVID-19 crisis. I'm sure local businesses in MK will appreciate all that Ritual has to offer, including the free subscription and no commission."

Ritual CEO, Ray Reddy said: "It's important to Ritual to help Milton Keynes businesses stay up and running while keeping everyone as safe as possible during this time. Ritual ONE and PayPal want to provide all our favourite restaurants, bakeries, and coffee shops the opportunity to easily offer contactless ordering for pickup, delivery, or dine-in. We believe

local businesses are what make our communities thrive, and we are here to support them as we work with MK Council and PayPal to help kick start the economy again.”



COVID-19

National Guidance

Please follow this link for the latest national guidance and support relating to COVID-19: <https://www.gov.uk/coronavirus>

From 14 September, people must not meet in groups larger than 6 in England. There are exceptions to this 'rule of 6': <https://www.gov.uk/government/publications/coronavirus-covid-19-meeting-with-others-safely-social-distancing/coronavirus-covid-19-meeting-with-others-safely-social-distancing#seeing-friends-and-family>

From 24 September, there are new rules on face coverings, mixing with other households, and how businesses operate.

PM statement on coronavirus on 30 September 2020

On 30 September, the Prime Minister made a statement at the coronavirus press conference. He provided an update on the rate of infection, confirmed that the Government is on track to hit the target of 500,000 tests a day by the end of October, explained why the Government announced the package of restrictions and stronger enforcement last week, and paid a particular tribute to students and assured them that plans are being put in place to allow them to go home safely for Christmas.

Statement: <https://www.gov.uk/government/speeches/prime-ministers-statement-on-coronavirus-covid-19-30-september-2020>

The R number and growth rate in the UK

The Government has (2 October) published the latest reproduction number (R) and growth rate of coronavirus in the UK. The guidance also includes the latest estimates by NHS England regions.

Guidance: <https://www.gov.uk/guidance/the-r-number-in-the-uk>

Stronger enforcement measures and easements

On 13 August the Government announced new enforcement measures targeting the most serious breaches of social distancing restrictions.

Press release: <https://www.gov.uk/government/news/prime-minister-announces-stronger-enforcement-measures-as-easements-resume>

Face covering guidance: <https://www.gov.uk/government/publications/face-coverings-when-to-wear-one-and-how-to-make-your-own>

Gatherings guidance: <https://www.gov.uk/guidance/meeting-people-from-outside-your-household-from-4-july>

The government has also confirmed that the plan set out in the 'roadmap to recovery', which was paused for two weeks, will resume from Saturday 15 August in England – except for specific areas where local restrictions are in place.

Roadmap to recovery: <https://bit.ly/3anbXJQ>

Marriages and civil partnerships: <https://www.gov.uk/government/publications/covid-19-guidance-for-small-marriages-and-civil-partnerships>

Working safely guidance: <https://www.gov.uk/guidance/working-safely-during-coronavirus-covid-19>

Closing certain businesses and venues:

<https://www.gov.uk/government/publications/further-businesses-and-premises-to-close>

Changes to travel corridors list

Last updated 03 October 2020.

Travel corridor list: <https://www.gov.uk/guidance/coronavirus-covid-19-travel-corridors>

Self Isolation guidance: <https://www.gov.uk/government/publications/coronavirus-covid-19-how-to-self-isolate-when-you-travel-to-the-uk>

Social distancing and coronavirus FAQ

FAQ document: <https://www.gov.uk/government/publications/coronavirus-outbreak-faqs-what-you-can-and-cant-do>

Guidance: <https://www.gov.uk/government/publications/staying-alert-and-safe-social-distancing>

Providing Care

The guidance for people who are caring, unpaid, for friends or family, and the guidance for people under the age of 25 who are providing care for someone, have been updated to reflect the latest information on face coverings and shielding.

The guidance for those under 25 providing care for someone now also includes new sections on transmission of coronavirus and local restrictions.

Guidance on unpaid care: <https://www.gov.uk/government/publications/coronavirus-covid-19-providing-unpaid-care>

Guidance for people under 25: <https://www.gov.uk/government/publications/young-carers-and-young-adult-carers-providing-care-during-coronavirus>

Other Guidance

Guidance on shielding & protecting people defined on medical grounds as extremely vulnerable

The guidance for the safe use of multi-purpose community facilities and the guidance for the safe use of council buildings have both been updated to reflect upcoming changes to the rules on wearing face coverings.

Council buildings: <https://www.gov.uk/government/publications/covid-19-guidance-for-the-safe-use-of-council-buildings>

Multi-purpose community facilities: <https://www.gov.uk/government/publications/covid-19-guidance-for-the-safe-use-of-multi-purpose-community-facilities>

The UK Government has provided advice on how to dispose of your personal or business waste, including face coverings and personal protective equipment (PPE) during the coronavirus pandemic. The general advice is to immediately dispose of the items through your usual black bin bag except if you are self-isolating and then you should double bag the item and store the item for 72hrs before putting it in the black bag waste



As I'm sure you are aware the Litter Hot Spot crew that was introduced last year from the Getting the Basics Right funding, is now a permanent resource so I thought I'd drop you a line to see if you want to change any of the hot spots you asked to be in the schedule last year. If so, please let me know which hot spot you wish to change and details of the new one so I can let Serco know who will update their schedule.

All five Parishes

On another note, we have used some signage on litter bins for our city-wide COVID-19 campaign to try to encourage people to use litter bins and also to take their litter home if a bin is full. We are looking to order some more of these signs to use across all areas, so if you have any litter bins you would like a new signs on, please let me know the bin location and which sign you prefer. Serco will fit the signs to the bins.

Tina Guile - Project Manager - T: 07702 816716

E: tina.guile@milton-keynes.gov.uk



M1 Roadworks

Location: M1 southbound between J15 and J14

Lane Closures: Lanes 1, 2 and 3 will be closed

Reason: Roadworks are planned

Status: Pending

Schedule: Expect disruption every day between 21:00 and 06:00 from 5 October to 10 October

Location: M1 southbound entry slip at Newport Pagnell Services.

Lane Closures: All lanes will be closed

Reason: Roadworks are planned

Status: Pending

Schedule: Expect disruption every day between 21:00 and 06:00 from 5 October to 10 October

Location: M1 northbound between J14 and J15

Lane Closures: Lanes 1, 2 and 3 will be closed

Reason: Roadworks are planned

All five Parishes

Status: Pending

Schedule: From 21:00 on 05 October to 06:00 on 06 October

Location: M1 northbound entry slip at J14

Lane Closures: All lanes will be closed

Reason: Roadworks are planned

Status: Pending

Schedule: Expect disruption every day between 21:00 and 06:00 from 5 October to 10 October



How can we help?



Contact your local ward councillors for Danesborough & Walton ...

David.hopkins@milton-keynes.gov.uk

Victoria.hopkins@milton-keynes.gov.uk

Alice.jenkins@milton-keynes.gov.uk



With the Marston Vale Community Rail Partnership

As you may be aware England's Economic Heartland's Transport Strategy is out to consultation until Tuesday 6th October - please see
<http://www.englandseconomicheartland.com/Pages/transport-strategyconsult.aspx>

On another note, the Rail Safety and Standards Board have recently published a very useful piece of research over the safety of train travel. Please see
<https://www.rssb.co.uk/what-we-do/Insights-and-News/News/Rail-still-safer-than-road-during-Covid-19>

Stephen Sleight
 Transport Team Leader (Rail) | Marston Vale Community Rail Partnership Officer
 Bedfordshire Rural Communities Charity
 T: (01234) 832645
 F: (01234) 838149
 E: stephens@bedsrcc.org.uk
 The Old School, Cardington, Bedford, Bedfordshire, MK44 3SX.



S106 Calculator

Education		Contribution	
Total Early Years			
Primary pupils			
Secondary pupils			
Post 16 pupils			
Leisure Recreation & Sports	Provision Cost	Maintenance Cost	
Playing Fields			
Local Play			
Neighbourhood Play			
Community Hall			
Local Parks			
District Parks			
Swimming Pool			
Allotments			
Sports Hall			
Social Infrastructure for a development scheme on allocated proposed employment land			Contribution
Library			
Adult continuing education			
Crematorium / Burial Grounds			
Museums & Archives			

All five Parishes

Health Facilities	
Waste Management	
Waste Receptacles	
Social Care – Day Care	
Social Care – Older Persons Housing	
Emergency Services	
Voluntary Sector	
University for Milton Keynes	
Milton Keynes College	
Inward Investment	
Public Art & Culture – 1% (estimated)	
Carbon neutrality (estimated)	
Transport	Contribution
Highways	
Public Transport	
Pedestrian / Cycle	
Travel Planning	

S106 Planning Obligation Response Template

Planning Application

Application No:		Proposal:	
-----------------	--	-----------	--

Consultee Information

Organisation		Name	
Date Completed		Your Ref:	

Contribution Information

Theme / Topic of contribution A separate table should be completed for each separate contribution	
Contribution Amount	
Purpose of contribution / Where Spent (define specific project/s) *Regulation 122 of CIL (a) necessary to make development acceptable in planning terms: (b) directly related to the development: and © fairly and reasonably related in scale and kind to the development	

All five Parishes

Justification / evidence basis	
Timing of payment / trigger (if appropriate)	
Other comments	



Roadworks - The new interactive service allows you to search for any planned works by area, road name, ward or parish, road type or reason. You can also see the current closures and those scheduled for the next two weeks.

Location	Street	From	To	Type
BOW BRICKHILL	Church Road	19/10/20 9:30am	21/10/20 3:30pm	ROAD CLOSURE
WAVENDON	STOCKWELL LANE	20/07/20 24 hours	06/12/20 24 hours	ROAD CLOSURE
WAVENDON	Newport Road	28/09/20 24 hours	06/10/20 24 hours	
WALNUT TREE	Tongwell Street H9 To H10	09/10/20 9:30am	09/10/20 4:30pm	ROAD CLOSURE
WAVENDON	A421	16/05/20 24 hours	16/11/21 24 hours	ROAD CLOSURE YES with diversion
TILBROOK	BRADBOURNE DRIVE	01/06/20 9:30am	27/09/20 4:30pm	ROAD CLOSURE
LITTLE BRICKHILL	Watling Street	04/09/20 9:30am	07/09/20 4:30pm	TRAFFIC SIGNALS (Multi-Way)
WALNUT TREE	TONGWELL STREET H9 TO H10	09/10/20 9:30am	09/10/20 4:30pm	ROAD CLOSURE



David Hopkins / Victoria Hopkins / Alice Jenkins

MKC Senior Staff List Corporate Core - MKC Senior Team 2020

MK Council Senior Officers

Chief Executive	Michael Bracey	01908 252200
------------------------	-----------------------	---------------------

Deputy Chief Executive	Tracey Aldworth	01908 253888
-------------------------------	------------------------	---------------------

Contact Us www.milton-keynes.gov.uk	Email: <i>firstname.surname@milton-keynes.gov.uk</i>	Tel: 01908 691691
---	--	--------------------------

Resources Corporate Director	Steve Richardson	01908 253374
Service Director: Legal and Democratic Services	Sharon Bridglalsingh	01908 252095
Service Director: Finance and Resources	Steve Richardson	01908 253374
Head of Revenues and Benefits	Robin Bates	07738 636820
Chief Internal Auditor Audit & Risk Management	Duncan Wilkinson	01908 252089
Service Delivery Manager: ICT	Hazel Lewis	01908 254117
Capital Programme Director	Kamran Rashid	07792 540523
Head of HR	Musrat Zaman	01908 254278
Director Housing and Regeneration	Michael Kelleher	01908 254167
Head of Customer Service, Digital and Transformation	Tracey Tudor	01908 257979
Director Adult Services	Director Adult Services	01908 253508
Director of Public Health	Muriel Scott	01908 252388

All five Parishes

<i>(Shared with Bedford & Central Bedfordshire Councils)</i>		
<i>Service Director: Children's Services</i>	<i>Mac Heath</i>	<i>01908 253121</i>
<i>Service Director: Adult Services</i>	<i>Victoria Collins</i>	<i>01908 253270</i>
<i>Assistant Director: Joint Commissioning</i>	<i>Mick Hancock</i>	<i>01908 252091</i>
<i>Place Corporate Director</i>	<i>Duncan Sharkey</i>	<i>01908 253411</i>
<i>Service Director: Housing & Regeneration</i>	<i>Michael Kelleher</i>	<i>01908 254167</i>
<i>Service Director: Environment & Property</i>	<i>Stuart Proffitt</i>	<i>01908 254692</i>

<i>Service Director: Growth, Economy & Culture</i>	<i>Tracy Darke</i>	<i>01908252394</i>
<i>Head of Placemaking</i>	<i>Neil Sainsbury</i>	<i>01908 252708</i>
<i>Head of Development Management</i>	<i>Jonathan Palmer</i>	<i>01908 253026</i>
<i>MKDP Chief Executive</i>	<i>Charles Macdonald charles.macdonald@mkdp.co.uk</i>	<i>01908 253899</i>
<i>Independent Chair</i>		<i>01908 253405</i>
<i>Director of Strategy & Futures</i>	<i>Geoff Snelson</i>	<i>01908 252665</i>

<i>Acting Service Director: Policy, Insight & Communication s</i>	<i>Sarah Gonsalves</i>	<i>01908 252275</i>
--	-------------------------------	----------------------------

Head of Communications	Kellie Evans	01908 252413
Environment & Property		
Head of Regulatory Services	Neil Allen	01908 252365
Head of Health & Safety	Alison Cook	01908 502935
Head of Environment & Waste	Nicholas Hannon	02908 252577
Head of Transport	Steve Hayes	01908 253281
Head of Property & Facilities	Bee Lewis	01908 252452
Head of Highways	Davina Millership	01908 252994
Growth Economy & Culture		
Head of Placemaking	Neil Sainsbury	01908 252708
Strategy & Futures		
Policy Manager	Sophie Lloyd	01908 253208
Head of Transport Innovation	Brian Matthews	01908 252064
MK Futures Programme Manager	Fiona Robinson	01908 252318
Housing & Regeneration		
Head of Communities	Jane Harrison	01908 253281
Head of Homelessness Prevention and Housing Access	Eleanor Nickless	01908 253032
Head of Neighbourhoods	Heledd Williams	01908 253696
Head of Asset Management and Investment	Stephen Young	01908 252272
Head of Regeneration	Aniekan Umoren	
Policy Insight and Communications		
Programme Manager – Parish & Town Councils	Kay Pettit	07971 102278
Partnership Officer	Heather Baker	01908 254597
MK Together Partnership Manager	Melanie Marshman	01908 252842
GIS Manager	Gillian Smith	01908 252569
Law & Governance		
Head of Legal Services	Paul Cummins	01908 254194
Head of Democratic Services	Peter Brown	
Finance & Resources		
Head of Finance (Deputy 151 Officer)	Anna Rulton	01908 252482
As Above	Natasha Hutchin	01908 253413
Head of Revs & Bens	Robin Bates	07738 636820
Head of ICT & Print	Hazel Lewis	01908 254117

Head of Customer Service & Transformation	Tracey Tudor	01908 257979
Head of HR	Musrat Zaman	01908 252151
Children's Services		
Head of Delivery – Setting & School Sufficiency & Access	Marie Denny	01908 253935
Head of Setting & School Efficiency	Cheryl Eyre	01908 254419
Head of Delivery – Corporate Parenting	Joanne Rabbitte	01908 254473
Head of Delivery – SEN and Disability	Caroline Marriott	01908 253138
Head of Delivery – Children's Social Work	Melinda May	01908 253127
Head of Youth & Community	Gavin Sandmann	01908 253870
Head of Safeguarding	Jo Hooper	01908 254307
Adult Services		
Head of Older Peoples Housing and Community Support	Sandra Rankin	01908 252762
Head of Learning Disability, Mental Health and Autism	Amanda Griffiths	01908 253042
Head of Assessment and Safeguarding	Philip Jones	01908 257940
Head of Reablement and Hospital Discharge	Michelle Smith	01908 253592
Public Health		
Deputy Director of Public Health	Emmeline Watkins	01908 254536
Group Head of Commissioning	Mick Hancock	01908 257967

CHANGES TO THE COUNCIL'S SENIOR MANAGEMENT STRUCTURE

Our current three directorate model plus small 'corporate core' was put in place four years ago. While this has helped teams share some closer practices and standards, we're yet to achieve our ambition for fully joined up thinking and working across the whole organisation. This can be frustrating for us, for councillors and for service users.

A new senior management structure is being developed that will help us operate more effectively as one council. The proposals are:

A new Deputy Chief Executive role will lead our critical support services, as well as a number of other business areas.

All five Parishes

Instead of the current structure of three Corporate Directors and ten Service Directors, services will be led by nine Directors, who would all be regarded as ‘chief officers’ and full members of our Corporate Leadership Team (CLT). As you may be aware Duncan Sharkey has left the Council and we will not be replacing either his former role (Corporate Director – Place) or the role of Corporate Director – People.

The corporate core would be replaced with a new Chief Executive’s Office, led by an Assistant Chief Executive (replacing the current role of Service Director – Policy, Insight and Communications), whose focus will be on improving organisational effectiveness and performance. Public Health will move into the Chief Executive’s Office.

Subject to political agreement, the new structure could be in place by early March. The CEO (Michael Bracey) will share full details then, including a detailed breakdown of who will be leading on specific areas.

Corporate Leadership Team - March 2019 Chief Executive - Michael Bracey, Head of Paid Service Director - Health and Social Care Integration - Jill Wilkinson Director - Finance and Resources - Steve Richardson Director - Law and Governance - Sharon Bridglalsingh Director – Environment and Property - Stuart Proffitt Director - Growth, Economy and Culture - Tracy Darke Director - Adult Services - Victoria Collins Director - Children’s Services - Mac Heath Director - Housing and Regeneration - Michael Kelleher Director - Strategy and Futures - Geoff Snelson Director - Policy, Insight and Communications - Sarah Gonsalves Director - Public Health - Muriel Scott
Finance and Resources Professional finance Revenue and benefits HR ICT Customer services LGSS Audit and risk
Environment and Property Highways Waste and Recycling Transportation Property Facilities Management Regulatory services Health and Safety
Growth, Economy and Culture Place Making Planning Economic development Arts and Heritage Historic environment Leisure Sports development
Law and Governance Legal services Democratic services Elections Civic events and mayoralty Councillor support Governance
Policy, Insight and Communications

Policy Partnerships Performance Communications Information Governance Emergency Planning Community safety
Housing and Regeneration Tenancy management Repairs and maintenance Tackling homelessness Strategic housing Regeneration and development Private sector housing Resident engagement and support
Children's Services Schools Early years Youth and community Special needs and disability Safeguarding Family support Children in care Care Leavers
Adult Services Mental health Learning disability Physical disability Older people's services Hospital discharge Adult safeguarding Commissioning
Public Health Health improvement Health protection Public health services Needs assessment Strategy and Futures

CIF Funding

Cost Guidance

The following examples may be used to estimate costs for proposed schemes. Please note that these are not definitive costs but are 'ball park' figures as an aid for estimation purposes. Actual costs will vary depending on local conditions and may increase due to additional requirements such as traffic management, underlying utilities and installation costs.

Play Areas: (The following includes some installation costs)

- Roundabout £5,000
- See-Saw £3,000
- Spring Animal £2,000
- Small Play Module (< 8 years) £8,000
- Large Play Module (older children) £12,000 plus
- New Bench Installation up to £1,200 (Depending on design of bench and base required)

Landscaping

Landscaping schemes are delivered by our service partner, Serco. Enquiries should be made via the Serco Services for Parishes web page. <https://www.milton-keynes.gov.uk/your->

All five Parishes

[council-and-elections/councillors-and-committees/parish-and-town-councils/information-for-parish-and-town-councils/serco-services-for-parishes](#)

If a parish is devolved they can self-serve.

This could include

- Pond enhancement (min costs in £1,000s)
- Removal and replacing whole beds/shrubs
- Seating area /paving works (will be in order of £1,000's depends on scope of works)

Gateway Features

- 'Welcome To' signage £4,000 (based on 2 signs. This also includes installation).
- Village Gateway up to £10,000 (depending on design and cost of gateway sign selected).

Traffic Calming

- Speed Cushions from £35,000 (Based on 4 speed humps, includes minor footway improvements and street lighting works also includes Traffic Regulation Order notices)
- Build-Outs / Pinch Points from £25,000 (includes two priority narrowing features at the entrance point into the village, cost for sign illumination, lighting column relocation, installation of traffic island associated road closure with Traffic

Management)

- Vehicle Activated Signs £5,000 (includes installation and a maintenance agreement)