

Wafas A N D Wallas

YOUR LOCAL PARISH MAGAZINE

www.wavendonparishcouncil.co.uk

October 2020

Welcome to the Autumn edition of Wafas & Wallas – how much has changed over the past nine months. Lots of information on the local situation regarding Coronavirus and how MK is addressing the pandemic. Also, lots and lots of planning activity across the Parish including some draft ideas of how the SEMK (Strategic Urban Expansion area) may look – read the details within this edition.... and how the council is undertaking a pilot of new wheelie bin based waste collection and recycling solution.





Wafas & Wallas – Your Parish Newsletter

AUTUMN 2020 EDITION

Editor: *David Hopkins*

80 Walton Road | Wavendon | Milton Keynes | MK17 8LW

Wafas AND *Wallas*

Printed & Published by
Wavendon Parish Council
on behalf of the people
of the ancient Parish of
Wavendon
(including parts of
Hog Sty End)

One thing is certain in these uncertain times and that is that two big events which normally take place in the next three months, ie Remembrance Sunday and the Woburn Sands Christmas Fayre, will not happen, but keep an eye on the Parish Council website to see what we may have put in place instead. At the time of writing, Milton Keynes numbers of Covid 19 cases are considerably lower than surrounding local authorities, but we cannot be complacent, so please let's keep our numbers low by following all the rules. Stay safe, everyone.

For any local issues contact me at;

David.hopkins@milton-keynes.gov.uk



Wavendon on the Web:

www.wavendonparishcouncil.co.uk

Copy Date for December 2020

(the Winter 2020) edition:

29 November 2020

Wavendon Parish Council

For any issues that you would like to raise with Wavendon Parish Council please contact, in the first instance, Parish Clerk - **Alan Kemp**

Wavendon Parish Council Clerk
clerk@wavendonparishcouncil.co.uk

Address

57 West End, Long Whatton,
Loughborough, Leicestershire, LE12 5DW.

Phone Contact

HOME 01509 844241

MOBILE 07783 939020

Wafas & Wallas is printed by
bespoke media 01234 720105

Village Contacts

Wavendon Parish Council



Cllr David Hopkins *(Chairman)*

Cllr Adam Jones

Cllr Yogini Thakker

Cllr Arthur Braddish

Cllr David Ostler

Cllr Robert Hill *(Vice Chairman)*

Cllr Ron Jamieson



**Looking to hire the
Wavendon Community Centre?**

Contact Susan Hopkins

Hall Manager:

T: 07512 685198

E: sueanne.hopkins@gmail.com

An Action Plan:

for bringing more people from Milton Keynes' diverse communities into the arts and heritage sector will be launched this month.



Included in it is a £50,000 investment from Milton Keynes Council in a traineeship and apprenticeship programme. This will open new pathways to the sector for young people from diverse communities.

The action plan is a core part of a report by the Arts and Heritage Alliance Milton Keynes (AHA-MK): Rethinking Cultural Inclusion and Diversity: A Call to Action for Milton Keynes. This report is based on research commissioned and funded by Milton Keynes Council, and conducted by AHA-MK.

Central to this research are the voices the people of Milton Keynes. AHA-MK ran 12 focus groups to explore views and understanding of the arts and heritage sector. These focus groups represented a range of diversity, including ethnicity, religion, disability, gender, sexual preference, socio-economic deprivation and age.

A survey was conducted with the Milton Keynes arts and heritage sector to examine diversity in audiences, in the paid and unpaid workforce, and in programming.

There is much good inclusion and diversity practice within the sector, but more can be done. The Call to Action asks the arts and heritage sector to place inclusion and diversity at the heart of its organisations. It invites diverse communities to walk alongside the sector on this journey to ensure Milton Keynes cultural sector becomes a leading light in inclusion and diversity. MK's cultural sector is at heart of the community and more must be done to connect and engage with local people.

Wavendon Volunteer Army

Well the WVA survived lockdown and decided to get back into action.

20th August saw a group of us meet outside the community centre at 9.30 am. We felt that the village roads were looking very untidy so started on clearing out the gully's in Walton Road and the pictures show before and after. The job was bigger than we thought so not fully completed as we needed to work on the beds at the entrance to Walton road opposite the pub. That bed needed weeding and the hedges cut back into a tidy state and roses deadheaded.

One new member joined us on the day so all in very successful.

More to be done by the team but a great start made on a beautiful sunny morning. Keep safe!



Before

After



Follow us on Facebook at Wavendon volunteer army or see the link on the waves page



Closure of the School Crossing In Woburn Sands

Please be assured we are on the case!

Unfortunately, Network Rail are being uncooperative at the very least. The Town Council is working with David Hopkins, our Borough Councillor, and with Emily Darlington, MKC Councillor in charge of Highways and Transport and with the Head of Highways and Transport senior officer at Milton Keynes Council who has been particularly supportive in trying to get Network Rail to reconsider their stance on this closure. NR's reason for the closure is seven incidents in recent years which have caused train drivers to brake suddenly.

A few years ago, they applied and were granted permission to build a large ramped bridge for pedestrians to replace the unmanned School crossing. This was sub-sequentially replaced with a plan for a smaller pedestrian foot bridge, partly because it was cheaper and partly because the large ramped bridge would have been unsightly.

However, the smaller bridge would not have been usable by disability chairs and pushchairs (unless collapsed and carried, of course). To provide for the latter, a waiting area in Cranfield Road for pedestrians needing to use the road level crossing was proposed together with some other measures to make the road crossing safer on the east (school) side, but Network Rail, after an Inspector's hearing, decided they did not have to put in these improvements.....as they are highways improvements, the cost if felt necessary could be borne by Milton Keynes Council. We regard that as totally unreasonable, since the crossing was closed by Network Rail. We see no reason why a gate controlled crossing for pedestrians cannot be put in place either in the original school crossing place or at the side of the road crossing.

We trust this helps you to understand the whole issue.



World Polio Day

Local Rotary Groups (including Woburn Sands) are taking part in October in the national crocus bulb planting to support its work eradicating polio around the world.

Spring each year sees a beautiful purple carpet of crocus blooming in many communities across Great Britain and Ireland thanks to the Purple Crocus Corm planting to raise awareness of the Rotary fight for a polio free world.

Planting the purple crocus corms by Rotary on Mowbray Green is a great way of getting active, having fun and talking to lots of different people about the need to eradicate the life threatening and disabling polio virus.



Award winning music classes for babies & young children

Monkey Music Flitwick and Great Denham
E: flitwick.greatdenham@monkeymusic.co.uk
T: 01908 965 865

Monday:
Great Denham Community Hall
Thursday:
Westoning Village Hall
Friday:
Wavendon Community Centre
Saturday:
Caddington Sports and Social Club

Nurturing a lifetime of music www.monkeymusic.co.uk
Group discounts for NCT members when 3+ people join together at the same time.



On-Call Firefighters Commitment

Our On-Call employees are committed to responding when they are needed. If you are considering applying to become one of our On-Call crew, you will need to be ready to commit too.

For much of the time, an On-Call Fire Station does not have a crew in it.

Our On-Call Firefighters are alerted (normally via a smartphone app). The app activates when they are needed, and they have a maximum amount of time to report to the required fire station and, with their crew, mobilise the necessary appliance(s).

Our On-Call Firefighters usually have other occupations, but when the call comes, they drop whatever they are doing and become part of our team.

Depending on the type of cover given, an **On-Call Firefighter could respond from home and/or a place of work, day and/or night**. Our On-Call Firefighters can respond to their nearest fire station or to an alternative location for a delayed response to larger or prolonged incidents.

During periods of On-Call cover, each **On-Call Firefighter receives a retaining fee**. They receive a disturbance fee and additional hourly rate payments when responding to an emergency.

On-Call Firefighters need to be committed to train and gain the skills needed for the role. They must attend regular training activities, in addition to some weekend and other pre-planned sessions.

Our On-Call Firefighters also have opportunities to carry out additional duties such as shifts with Wholtime colleagues, community fire safety sessions, equipment maintenance and testing and general station routines. *These duties are in addition to responding to emergencies, such as:*

- Animal rescues
- Road traffic collisions
- Property fires
- Industrial fires
- Fires in the open
- Water rescues
- Humanitarian assistance
- Medical assistance



FOR MORE INFORMATION GO TO:

<https://bucksfire.gov.uk/join-us/on-call-firefighters/>

SIGN UP FOR AN AWARENESS EVENING HERE:

<https://bucksfire.gov.uk/events/>

Q: My smoke alarm is beeping what do I do?

Smoke alarms with a low battery or fault will emit a short intermittent high-pitched warning sound.

More at:

<https://bucksfire.gov.uk/blog/faulty-smoke-alarms/>

Wavendon & Woburn Sands streets are becoming increasingly strewn with discarded facemasks and protective gloves.



As well as being unsightly and potentially dangerous for pets and wildlife there is also the risk that they could spread infection. The World Health Organisation has warned that appropriate disposal is essential to avoid any increase in transmission.

Facemasks, gloves and other forms of PPE are designed to protect people but poor disposal risks doing the opposite.

We would remind residents to think about how they dispose of their waste.

IFTL to Manage the new Glebe Farm Education Campus in Wavendon

IFTL is very privileged and excited to announce that we have been successful in bidding to open a brand new all-through school based in Glebe Farm, Milton Keynes.

Their approach to this all through school will be both innovative and inspiring and have our learners at its heart. IFTL understand the responsibility of opening such a provision and they work very closely with our strategic partner, 5 Dimensions Trust, and other valuable stakeholders, including parents, to provide the best possible education in this vibrant new community of Wavendon.

The school is due to open in September 2022.

Glebe Farm is located 2.6 miles from junction 13 of the M1 in Milton Keynes.

The 'all through' school will be at Glebe Farm at Wavendon - the site of hundreds of new houses.

It will take 1,530 pupils from the ages of five to 16, but the pupils will have to move elsewhere for a sixth from.

There will also be a nursery with the equivalent of 39 full time places.

The Primary School will be open to families living in Glebe Farm for children in reception to Year 6. But the catchment area will be extended to Eagle Farm South, Woburn Sands and Wavendon Village for children in Year 7 to Year 11.

Development of the school will take place on a 95,000m² site - an area larger than 13 football pitches - off Burney Drive in Glebe Farm. This will include sports facilities such as an artificial grass pitch and tennis courts which will be made available for use by the local community in Wavendon.

Construction will begin in January 2021.



community Champions



in Wavendon

WANTED TO SHARE KEY COVID-19 INFORMATION

We're calling on you to help reach friends, family, neighbours, colleagues and thousands of other local people with trusted information and advice related to COVID-19.

Throughout the pandemic, the Parish Council has been keeping residents informed and up to date with local information and the latest government and health advice. In light of increasing infection rates and changing restrictions, we're keen that as many residents as possible are kept up to date with the latest advice and information.

But we know we won't reach everyone, so we're calling for people to sign up to become Community Champions to help us reach more of the local community.

Many people have wanted to help others throughout the pandemic, but were unsure how to go about it. Being a Community Champion is an easy way to make a massive difference, by sharing the latest information and advice with friends and families. This could be via local Facebook groups, WhatsApp groups, social organisations and clubs that people are part of.

Volunteers will be provided with the latest information to share at the click of a button - it's that simple. It won't take up a huge amount of time, but it could really help make a massive difference in helping to keep our families, friends and communities safe.

Alan Kemp (Wavendon Parish Clerk)
by post at 57 West End, Long Whatton, Loughborough,
Leicestershire, LE12 5DW
T: 01509 844241
E: clerk@wavendonparishcouncil.co.uk

New Waste Collection Trial underway in some parts of MK

Last year MK Council promised that it would look at cleaner, greener and safer solutions to MK's waste collection. MK is one of the best places for high recycling rates in the UK, and was one of the first places in the country to introduce kerbside recycling, back in 1992.

It was the first to build its own in-borough recycling plant. Milton Keynes Council will be trying out a new cleaner, greener and safer waste collection system from Monday 26 October. The pilot will last for 4 months and will cover just under 3,000 homes. This pilot will test whether wheelie bins are part of the solution in making MK the Greenest City.

In the pilot, wheeled bins will replace sacks to test whether this keeps the streets of MK cleaner with less bags being ripped open by wildlife; increases the levels of recycling; and makes it safer for residents and collection crews who occasionally can be injured by contents of sacks.

Residents will be provided with 3 bins replacing black bags, recycling sacks and the blue box. One bin will be for residual waste, one bin for paper and another for all other recycling including glass, metal and plastics. For those homes unable to accommodate bins, boxes similar to the current blue box will be provided. Green waste and assisted collections will remain unchanged.

Homes within the pilot area (*which does not include Wavendon & Woburn Sands at present*) can expect to receive a letter by the end of September.

The pilot will help MK Council develop options for consultation and learn about how people use and feel about wheeled bins before any decision is made. The Council will be asking for feedback from people in the pilot and from the teams making the collections. A 12-week borough wide public consultation will then start on 2 November 2020.

A decision will be made in March 2021 to inform our next waste collection contract (beginning in 2023)

More information on the waste collection pilot is on the MK Council website. Should residents have queries, there is a section on the website (<https://www.milton-keynes.gov.uk/waste-recycling/recycling-pilot>) for frequently asked questions, which will be updated following any feedback received. Residents can also contact recycling-pilot@milton-keynes.gov.uk or **01908 253334**.



Grey wheeled bin
collected for residual waste



A wheeled bin with a blue lid for plastic, metals and glass



A wheeled bin with a red lid for paper and card



A battery container that hangs on the side of the bin

Report a Missed Collection

<https://www.milton-keynes.gov.uk/waste-recycling/report-or-request-it/report-a-missed-collection>

Wavendon and Woburn Sands have suffered from 'localised' mixed collections in recent weeks.

Please inform MK Council if it has missed collecting your rubbish or recycling by completing the on-line form or call Customer Services on Tel. **01908 252570**.

Before you report a missed collection please check that:

- that it was placed at the edge of your property by 7am on your usual collection day
- collection is not delayed due to Bank Holiday collection
- incorrect items have been placed in the recycling containers

If incorrect items have been placed in a recycling container it will not be collected or emptied. Check what can and cannot be recycled in the different containers please.

<https://www.milton-keynes.gov.uk/waste-recycling/bins-bags-and-boxes>

Please note: Two different vehicles collect waste and recycling from your street - one for the black bin bags, clear recycling sacks and blue boxes for glass, and the other collects the green wheelie bin and yellow battery bags.

You will have a 48 hour window to report a missed collection to MK Council - after this period the council will not return until the next scheduled bin collection day.

The missed collection form on the Report It part of the MK Council Web Site contains information about your waste collection and will highlight if there was an issue with your bins, bags or boxes that prevented the collection. If there was an issue, or if the crew have not yet completed your street you will not be able to log a missed collection.

Travellers

There have recently been Travellers camped on land at Walnut Tree and then at Wavendon Gate. Should Travellers appear on or close to your land or on a site close to you please contact:

Pete Roberts -

Team Leader (Environmental Crime Unit – MK Council)

T: 01908 254569

E: Pete.roberts@milton-keynes.gov.uk

Should you need to contact **Thames Valley Police** our local Police Sergeant (**[Sgt Thomas Neilson](#)**) is the best contact for initial advice and guidance.

Police action and community impact always is assessed and as I hope readers will be aware there is legislation and policies in place that both the police and local council have to adhere to before they look at positive steps to bring this to a conclusion. First aspect is identifying the landowner who has to act. They identify the land as belonging to them and then they make the request for the encampment to leave. This will then usually follow a sec 77 notice being served requesting the encampment to leave. If this is not adhered to then they would look to seek a court order for eviction. In most cases this works however on occasions the police do have Sec 61 powers:

They require set criteria in law that we all have to follow:

The list is not too exhaustive however I will pick out pertinent points:

*** 2 or more vehicles**

*** Damage caused to gain access to the land (such as padlocks being broken, fence posts removed from the ground or fencing damaged etc)**

*** Aggravating factors present such**

- Local amenities are deprived to communities
- Local disruption to the economy
- Significant disruption to the local community or environment
- There is a danger to life
- There is a need to take a preventative course of action

to assess all of the above when a group move onto a new site is very difficult and TVP and the Council struggle a bit at weekends when it comes to who is the landowner and also being able to get a landowner out to the site to confirm it is their land and make the official request to leave.



There is a lot of work to be done around this re-occurring issue, target hardening from local councils on vulnerable areas is always a must, although frustrating that this needs to be done and of course this represents a cost to the local authority.

SGT 724 Thomas NEILSON

- Milton Keynes South Neighbourhood Team
Milton Keynes Police Station, 302 North Row, Witan Gate, Milton Keynes, MK9 2DS

Thomas.neilson@thamesvalley.pnn.police.uk

South East Milton Keynes

A draft South East Milton Keynes Strategic Urban Extension Supplementary Planning Document (SE SUE SPD) is under development.

Various meetings took place in 2020 including meetings with developers and a meeting with Local Stakeholder Group members for the site. Matters related to the site were discussed at Planning Cabinet Advisory Group (CAG) meeting on 13/07/2020 which lead to organising a workshop on SE SUE MK SPD matters.

Officers from Urban Design team led the Planning (CAG) workshop on 25/08/2020 where different response options for the concept plan and vision for the area were discussed.

Another Planning CAG workshop will take place in due course (likely October 2020) which will focus on the matters around Public Transport and social infrastructure for the site. It is anticipated that a draft SPD will be presented to Planning CAG members in December 2020 with a view of taking the draft SPD for delegated decision on consultation in January 2021 and public consultation on the draft taking place sometime in February 2021. It is anticipated that the SPD will be adopted in Summer 2021.

Plans for Schools in the Fullbrook Pyramid

Central Bedfordshire Council has moved to the next stage of the Schools for the Future programme in Woburn Sands and the surrounding villages, known locally as the Fullbrook pyramid.

The publication of statutory notices follows a 12-week public consultation, which received over 590 responses between January and April this year.

It has considered the feedback and developed a revised plan which will be split into two phases.

The first phase, which forms this statutory consultation, focuses on Aspley Guise and Swallowfield lower schools and Fulbrook Middle School.

There will be a further public consultation for the second phase, regarding a proposal for Husborne Crawley, Ridgmont and Woburn Lower Schools to federate on one new site, once a proposed site for the school is known.

THE REVISED PLAN FOR THE FIRST PHASE IS:

Aspley Guise Lower School

a change of age range from 5-9 to 5-11, from lower to primary, from 2022
an increase to the published admission number from 27 to 30, with 1 form of entry
an expansion of the school premises

Swallowfield Lower School

a change of age range from 2-9 to 2-11, from lower to primary, from 2022
the published admission number to remain at 60, with 2 forms of entry
an expansion of the school premises

Fulbrook Middle School

a change of age range to become an extended secondary school, with 4 forms of entry, aged 9-16 (Yrs 5-11) in 2022.
a change from an extended secondary to a secondary school, aged 11-16 (Yrs 7-11) in 2024, by which time all of the lower schools within the Woburn Sands area will have changed to primary schools

For more information go to

<https://www.schoolsforthefuture.co.uk/plans/woburn-sands/overview>

Hydrant Misuse in Wavendon

Following recent complaints and information received from residents in Wavendon, Aquam water in association with Anglian Water have successfully caught and warned several illegal users of water in the area.

Connecting to the water network via a washout point in the pavement, and using any equipment other than that approved by Anglian Water is a criminal offence under the 1991 Water industry act. Unfortunately, people are still prepared to flout the rules.

The unauthorised use of equipment can cause cracked pipes, reduced water pressure, broken hydrants and burst mains. There have been instances of contamination and discolouration in areas where the illegal extraction of water has taken place. Anglian Water has partnered with Aquam Water Services to supply the only legal standpipe acceptable for the local network. These are coloured Pink and have meters attached to them to measure the supply of water. They also have a non-return valve fitted to prevent any accidental contamination. Examples of these are shown below. Any other colour or type is illegal and should be reported immediately to **Aquam water** on **01733 794641**, e mail **anglianwater@aquamcorp.co.uk**. If a photo can be taken safely from a distance then this would help with any identification, but please do not approach anyone seen taking water.



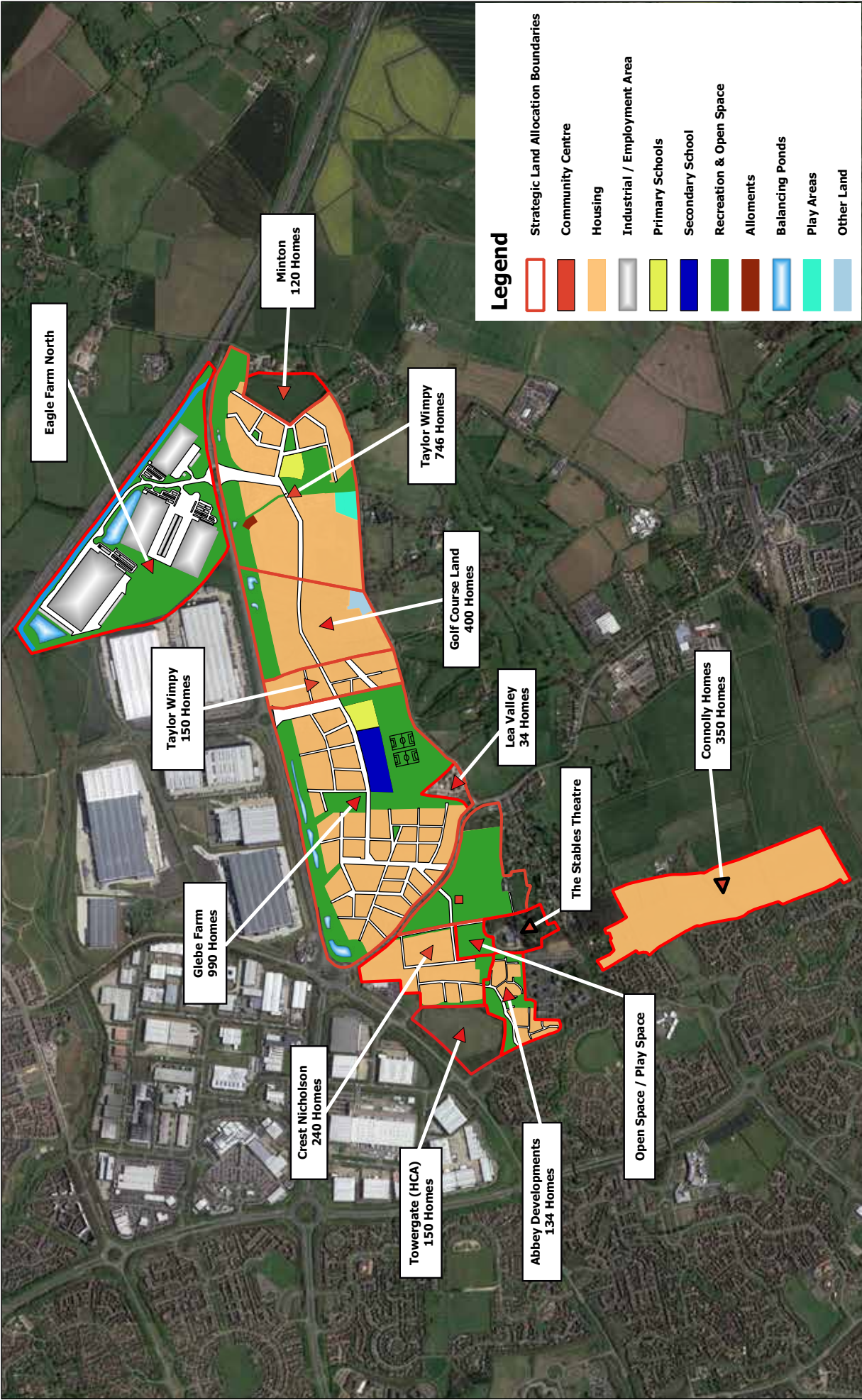
Water theft in the UK has reached very high levels, it is thought that this cost to the industry may be in excess of £500 million per year. Most of this activity is by operators being ignorant of the law, but there are many who deliberately flout the rules for financial gain. Anglian water has recently had success in the courts with one company being fined £5000 after being caught 3 times within a 6-month period.


All users of Anglian Water standpipes have to undergo training to enable them to use the equipment safely not only for themselves but to safeguard the water supply.

Hopefully with the support of the public and courts we can ensure that all illegal activity can be prevented.

Charlie Webster - Compliance Officer,
Aquam Water Services







Research & Intelligence - GIS

Plan by: Ken Farrier


Tel: MK 254264

Date: 7/8/2018

Project:

Strategic Land Allocation - Proposed Development

© Crown copyright and database rights 2018
OSurvey [100019593]



Scale 1:21,192 @ A3L

st mary's wavendon: here to help, every day

welcome We're a friendly, diverse and outward-looking church, exploring how to serve our community, both in person and online. We offer a warm welcome to all, through social events and practical support, as well as faith-based activities and life events. Whatever you're looking for, we invite you to discover how we can help. Revd **Matt Trendall** will be glad to answer your enquiries on **01908 582839**



private prayer We're pleased to open for **private prayer**, on **Wednesdays, 2pm to 4pm**. We work within government guidelines - see church website for details. For **urgent support in prayer**, we have a group committed to your needs: **prayerchain.wavendon@gmail.com**

worship A 'Simple Sunday Service' is held at **9.30am** each week in St Mary's church, but please **check the website** for any changes that may become necessary. We follow guidance from the government and church authorities, aiming to offer you a genuine welcome and an act of worship. If you'll be joining us, **please wear a face covering**. Find more on the measures we apply: **<https://www.stmaryswavendon.co.uk>**

at home Church will still come **direct to you each week at home!** We record a 30-minute service for you to access from the comfort of your home, and it's available to watch at any point - on Sunday or during the week - it's up to you! Try our '**Daily Inspiration**' link, too.

For a shared experience join us online any Sunday, 9.30am

<https://www.stmaryswavendon.co.uk>

website Much of what's planned for the next few months is provisional, so **please keep checking the website** for latest updates - there may be urgent changes to times/dates/venues, and possible cancellations . . . but perhaps some additional activities, too . . .

<https://www.stmaryswavendon.co.uk>

keep checking for updates & please spread the word not online? Call 01908 582839 for help with staying in touch

Remembrance

Sunday 8th and

Wednesday 11th*

November

*TBC: Please check St Mary's Church website nearer the date for final details



macmillan coffee morning

On **Thursday 24th September** we can all 'raise a mug' for **macmillan** - the vital cancer support charity - just not in the usual way! **Please check the church website for details** - everyone can still play a part, even if you can't join us online... **Everyone welcome: <https://www.stmaryswavendon.co.uk>**



Harvest online & face:face
St Mary's Church Wavendon
Sunday 27th September
everyone welcome!

more info at <https://www.stmaryswavendon.co.uk>

Monthly Quiz Nights

fun for all * meet/make friends * free of charge

3rd Tuesday of each month:

20th October * 17th November * 15th December

7.30pm via Zoom

We do the tech so you can whizz into a chat room with your team-mates

NB **To request the link to join us**, email matt.trendall.mk@gmail.com

a few days before each quiz. Everyone's welcome. Teams of up to 6